

## Furniture Specification

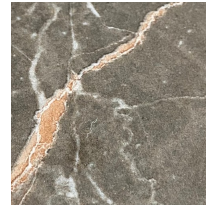
Project:	Tomassini Arredamenti Display
Item:	Table
Qty:	1
Name:	Slim Rectangular
Description:	Rectangular table with metal structure and ceramic top.
Dimension:	Cm.240x100x74h.
Finish:	Structure in embossed mocha finish; top in Ombra di Caravaggio ceramic.
Manufacturer:	Sovet

**Additional specification:** The top in Keramik represents marble effect and all its features of being a natural product, any visible "imperfections" as shades, grains more or less intense, veinings, irregularities on the surface, or colour differences are an intrinsic characteristic of this material effect and cannot be considered a flaw. Each slab of Keramik used is different from the other and cannot be chosen by customer. For this reason, catalogue pictures are only indicative and the final product may differ from them. These aspects give value and make each product unique.

### Sample / Image Reference *(Main Picture is indicative)*



### Note:



Ombra di Caravaggio Ceramic



Embossed mocha

