

# Teka 171 Chair (stackable)

Design Gordon Guillaumier

Technical Information



TEKA spotlights all the expressive force of teak, a wood whose high value is equally matched by its malleability, in a complete collection of outdoor sofas and low tables, dining tables and chairs. Designed by Gordon Guillaumier, TEKA is developed around a particular prism-shaped geometric construction of great impact which, at the same time, confers a sensation of lightness to the product, while retaining its intrinsic durability. The tops of the outdoor tables are in stoneware slates, with elegant opaque natural tones or vibrant glossy colours.

## TECHNICAL INFORMATION

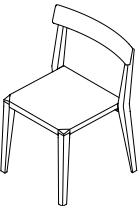
DESCRIPTION  
Chair for outdoor use.

STRUCTURE  
Teak.  
Batyline.

WEIGHT  
Structure 9 kg

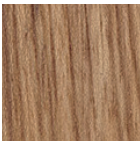
STORAGE COVER  
Available for 4 stacked chairs.

DIMENSION  
L 54 × P 52 × H 80 cm  
H seat 46 cm  
W 21" ¼ × D 20" ½ × H 31" ½  
H seat 18" ¼



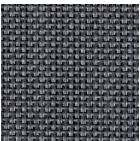
## Materials

## STRUCTURE



Teak

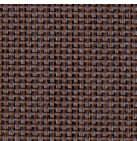
## BATYLINE



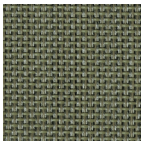
Grey



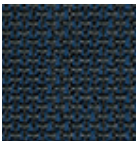
Sand



Brown



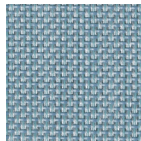
Olive



Navy



Ginger



Sky



# Teka 172 Armchair (stackable)

Design Gordon Guillaumier

Technical Information



TEKA spotlights all the expressive force of teak, a wood whose high value is equally matched by its malleability, in a complete collection of outdoor sofas and low tables, dining tables and chairs. Designed by Gordon Guillaumier, TEKA is developed around a particular prism-shaped geometric construction of great impact which, at the same time, confers a sensation of lightness to the product, while retaining its intrinsic durability. The tops of the outdoor tables are in stoneware slates, with elegant opaque natural tones or vibrant glossy colours.

### TECHNICAL INFORMATION

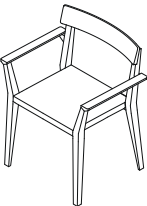
**DESCRIPTION**  
Armchair for outdoor use.

**STRUCTURE**  
Teak.  
Batyline.

**WEIGHT**  
Structure 9 kg

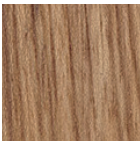
**STORAGE COVER**  
Available for 4 stacked chairs.

**DIMENSION**  
L 65 × P 52 × H 80 cm  
H seat 46 cm  
W 25" <sup>5</sup>/<sub>8</sub> × D 20" <sup>1</sup>/<sub>2</sub> × H 31" <sup>1</sup>/<sub>2</sub>  
H seat 18" <sup>1</sup>/<sub>4</sub>



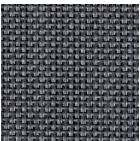
### Materials

### STRUCTURE



Teak

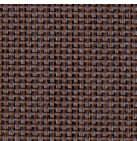
### BATYLINE



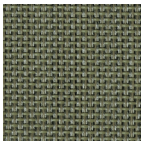
Grey



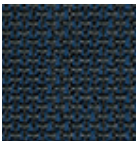
Sand



Brown



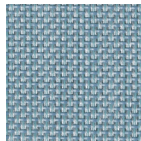
Olive



Navy



Ginger



Sky