

# Eden 220 Coffee Table

Design Rodolfo Dordoni

Technical Information



The EDEN system is an expression of synthesis, a project that draws on RODA's expertise in terms of manufacturing processes and use of padding materials, and combines all these elements according to an international, contemporary and versatile approach. The modular sofa collection consists of weather-resistant teak bases in white colour, of one, two and three-seater; a new hexagonal module acts as a corner-element in the most articulated compositions or as a single item, an "island" of relax . The backrests can be positioned in multiple ways and are made of stainless steel with a Batyline or padded tubular covering. The outdoor sofa can be combined with a coffee table with teak slatted top or with natural stone top.

## TECHNICAL INFORMATION

### DESCRIPTION

Coffee table for outdoor use.

### STRUCTURE

Teak.

### TOP

Stone.

### WEIGHT

Structure 43kg

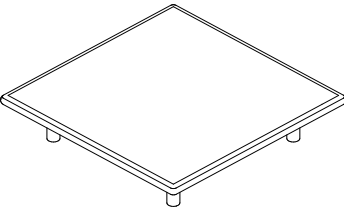
### STORAGE COVER

Available.

### DIMENSION

L 95 × P 95 × H 22 cm

W 37" <sup>3</sup>/<sub>8</sub> × D 37" <sup>3</sup>/<sub>8</sub> × H 8" <sup>5</sup>/<sub>8</sub>



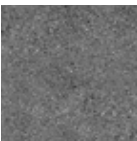
## Materials

## STRUCTURE



WR Teak

## TOP / STONE



Luna stone



Carrara  
marble



Farsena