

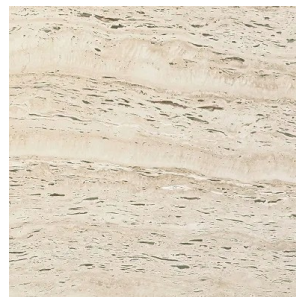
Furniture Specification

Project:	Tomassini Arredamenti Display
Item:	Table
Qty:	1
Name:	Monolith
Description&Finish:	Table with two-slab top and legs in closed-pore polished travertine, with matt champagne colored metal inserts.
Dimension:	cm. 300x130x74h
Manufacturer:	Poliform
Additional specification:	Fillings and coverings are in accordance with Italian regulations. Any fireproofing or other treatment required by law in other countries must be requested upon ordering and is the responsibility of the final customer.

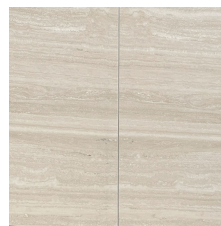
Sample / Image Reference (*Main Picture is indicative*)



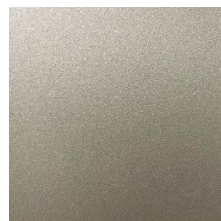
Note:



Closed-pore travertine



Two-slab top



Champagne matt finish

