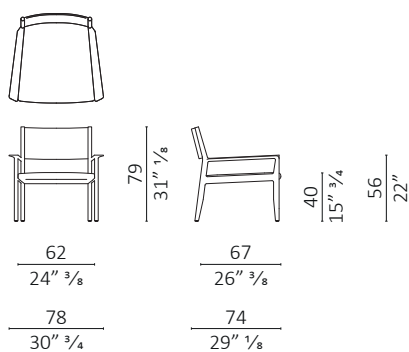


**Caratteristiche tecniche** - Poltrona realizzata in massello di noce americano o frassino. Seduta e schienale in multistrato imbottiti.  
**Technical features** - Armchair made in solid American walnut or ash. Seat and back-rest in upholstered plywood.



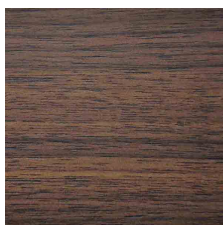
c.o.m. (l.mt.1,10/sq.mt.2,10)

## Finiture / Finiture

### Legno Noce / Wood Walnut



noce  
walnut



noce dark  
walnut dark



noce moka  
walnut moka



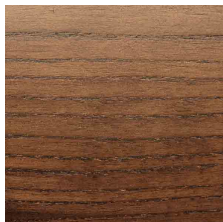
noce brown  
walnut brown

## Finiture / Finiture

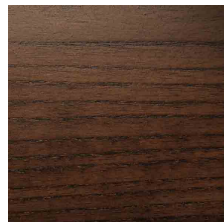
### Legno Frassino / Wood Ash



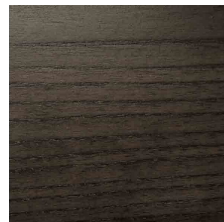
frassino sbiancato  
*bleached ash*



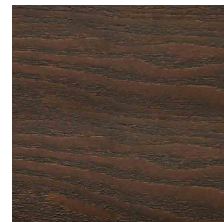
frassino dark  
*ash dark*



frassino moka  
*ash moka*



frassino brown  
*ash brown*



frassino wengè  
*ash wengè*



frassino black  
*ash black*

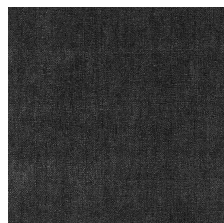
### Tessuto Velluti e Ciniglie / Fabric Velvet and Chenille



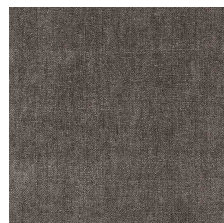
Belsuede-029



Belsuede-032



Belsuede-015



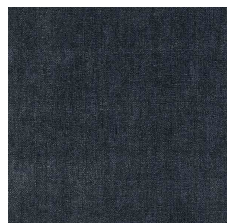
Belsuede-014



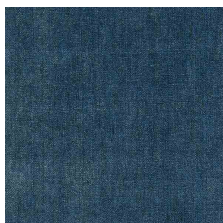
Belsuede-01



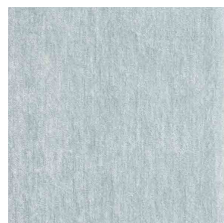
Belsuede-036



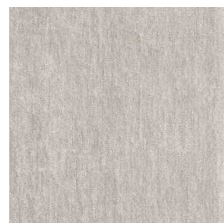
Belsuede-016



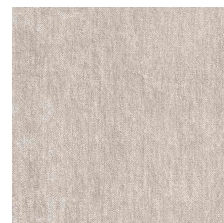
Belsuede-017



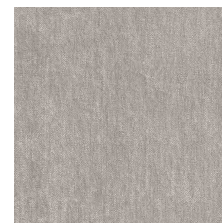
Belsuede-040



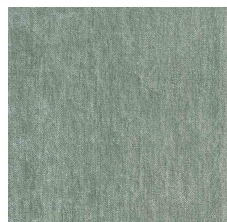
Belsuede-034



Belsuede-010



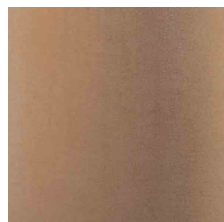
Belsuede-011



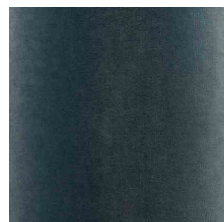
Belsuede-012



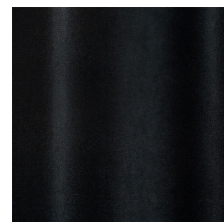
Belsuede-039



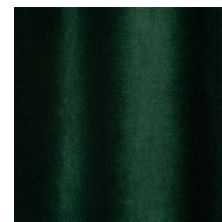
Amazonie-041



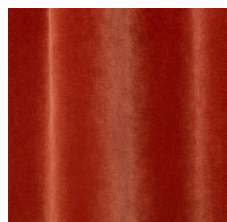
Amazonie-042



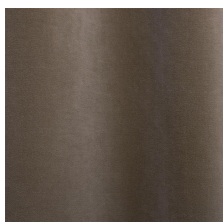
Amazonie 002



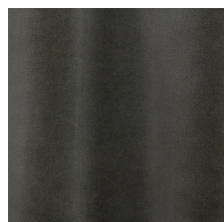
Amazonie 022



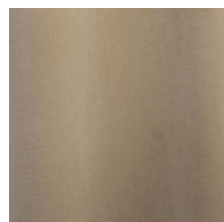
Amazonie 025



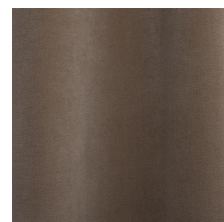
Amazonie 045



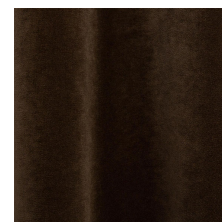
Amazonie 040



Amazonie 043



Amazonie 036

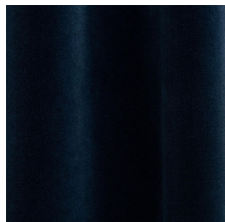


Amazonie 038

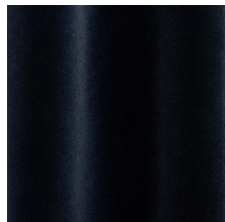
## Finiture / Finiture

### Tessuto Velluti e Ciniglie / Fabric Velvet and Chenille

---



Amazonie 037



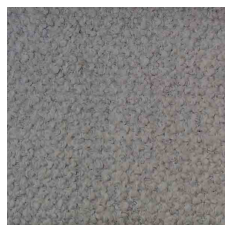
Amazonie 035

### Tessuto / Fabric Bouclé

---



Verone Creme



Monza 00



Mies-005



Monza 09



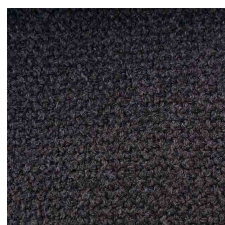
Mies-004



Monza 07



Monza 97



Monza 84



Monza 58



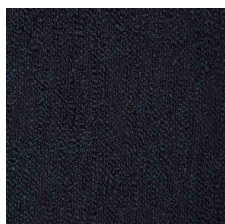
Monza 27



Monza 48



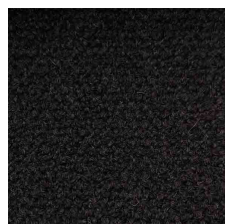
Monza 45



Verone Nuit



Mies-020



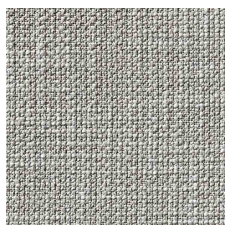
Monza 88



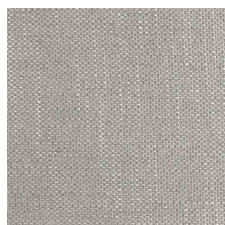
Mies-008

### Tessuto Vari / Fabric Various

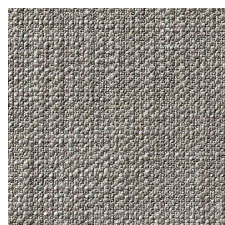
---



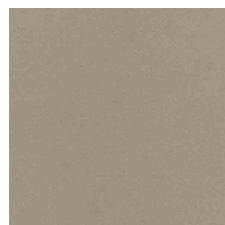
Gypsy-892



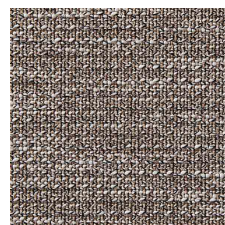
Flair-108



Gypsy-895



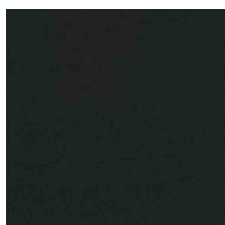
Divina 3 224



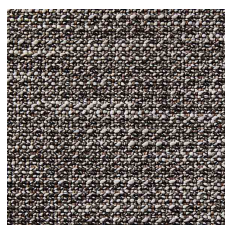
Oxford-893



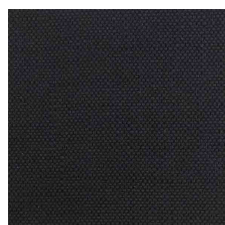
Grisaille-004



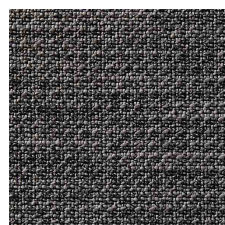
Divina 3-191



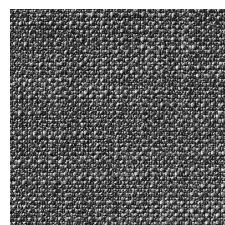
Oxford-897



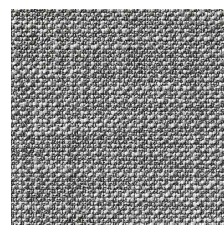
Flair-121



Oxford-999



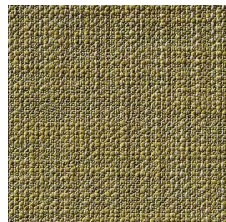
Gypsy-997



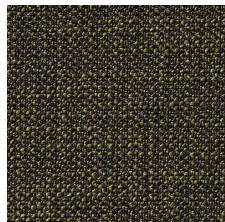
Gypsy-995

## Finiture / Finiture

### Tessuto Vari / Fabric Various



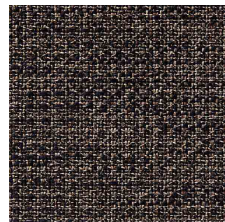
Gypsy-184



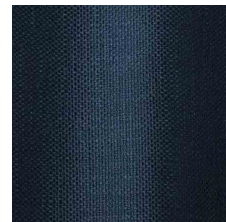
Gypsy-799



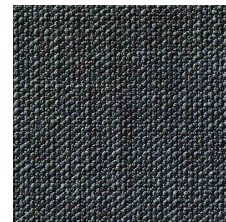
Flair 166



Oxford-889

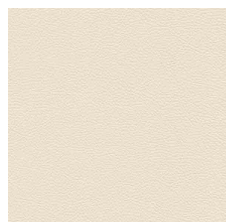


Flair-164

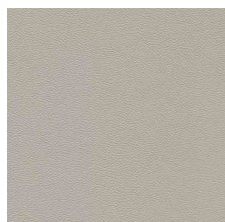


Gypsy-699

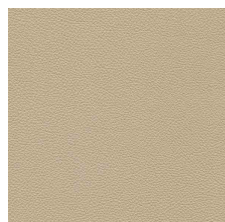
### Pelle / Leather Color Sphere PF



SC 06 Calicot



SC 23 Tortora



SC 32 Caolino



SC 51 Panna



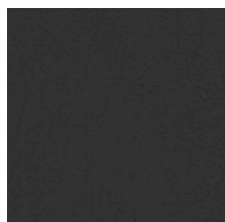
SC 31 Quarzo Fumè



SC 34 Maggese



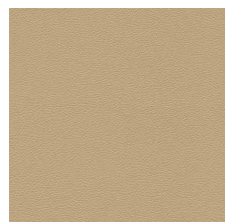
SC 26 Topo



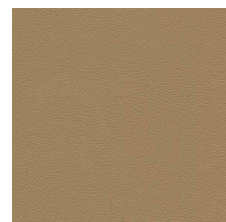
SC 20 Inchiostro



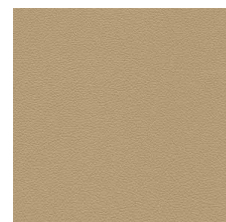
SC 21 Amianto



SC 53 Creta



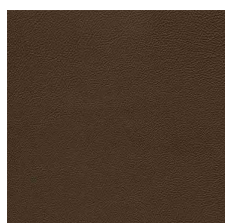
SC 55 Camel Hair



SC 52 Daino



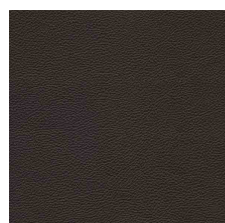
SC 66 India



SC 59 Noce di Pecan



SC 80 Bruno Havana



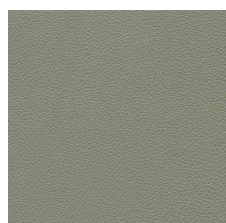
SC 29 Ardesia



SC 148 Lacca



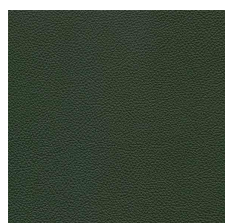
SC 146 Coccio Pesto



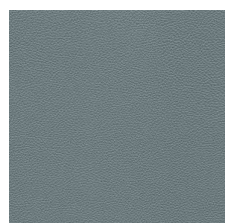
SC 173 Glauco



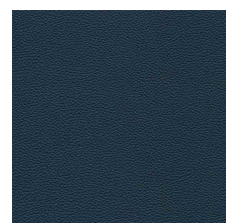
SC 177 Limo



SC 178 Alpi



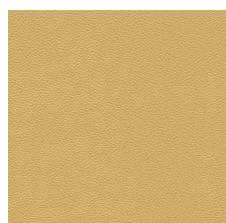
SC 254 Steel Blue



SC 278 Atlantic Blue



SC 279 Alchemy

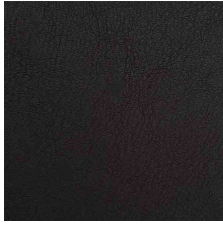


SC 133 Paglierino

## Finiture / *Finiture*

### Pelle naturale / *Natural leather Acquario*

---



201 Testa di moro



202 Antracite



204 Fango

### Pelle naturale / *Natural leather Nabuk*

---



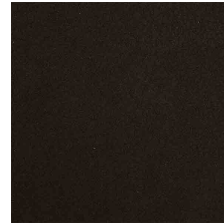
Nabuk Grigio



Nabuk Conchiglia



Nabuk Seppia



Nabuk Marrone Scuro