

Icosofà design Roberto Lazzeroni

Caratteristiche tecniche - Divano realizzato in massello di noce americano. Scocca in multistrato di pioppo imbottita. Piedini in ottone.

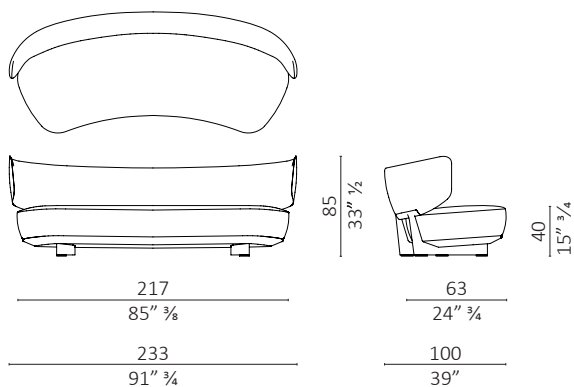
Technical features - Sofa made in solid American walnut. Body in upholstered poplar plywood. Leg tips in brass.

Nota - Nella versione asimmetrica e chaiselongue, la profondità di seduta della parte più stretta è P 66 (26").

Note - In the asymmetrical and chaiselongue versions the seat depth of the narrowest part is D 66 (26").

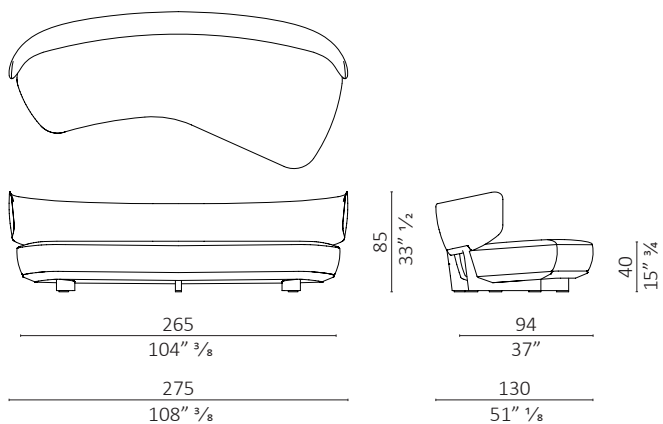


Icosofà 233



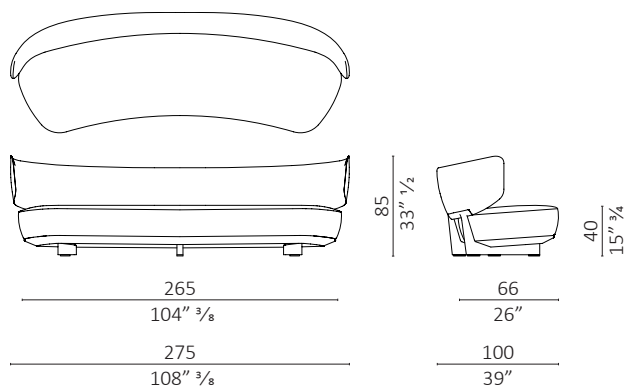
c.o.m. (l.mt.9,60/sq.mt.18,60)

Icosofà 275 DX / RH

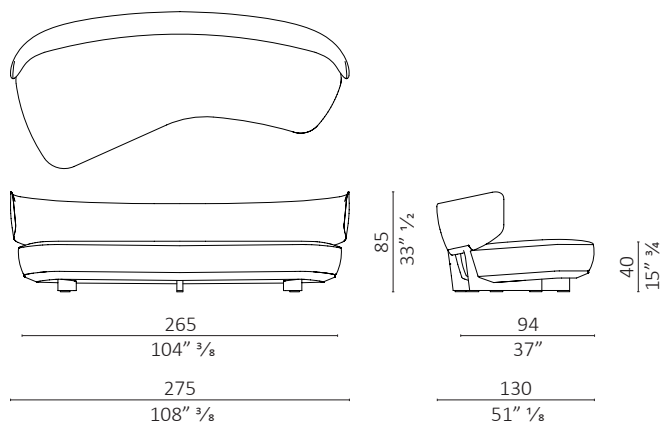


c.o.m. (l.mt.9,00/sq.mt.16,00)

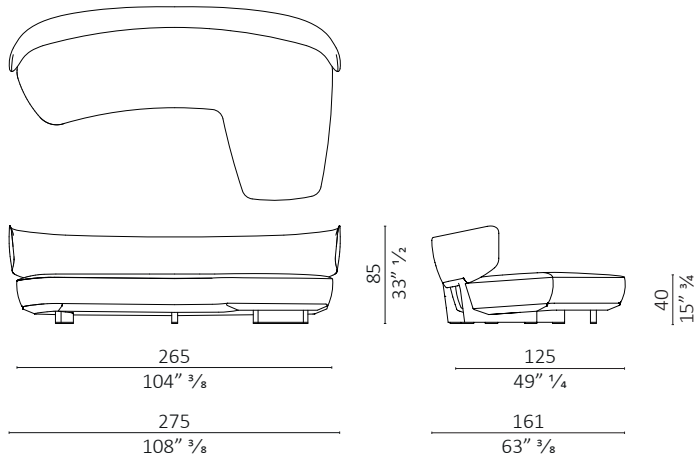
Icosofà 275



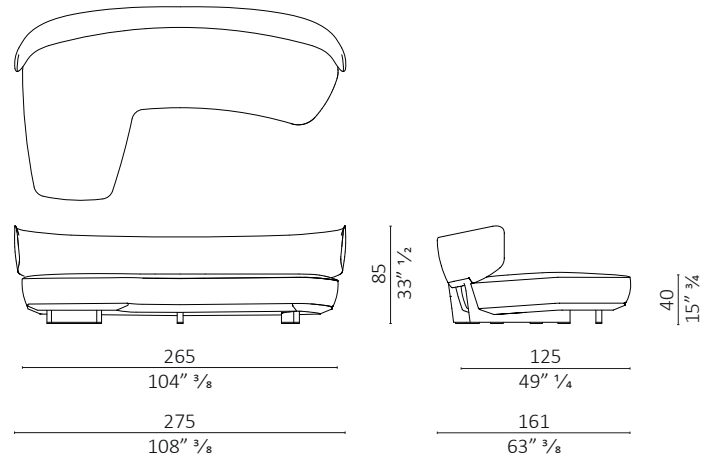
Icosofà 275 SX / LH



Icosofà 275 chaiselongue DX / RH



Icosofà 275 chaiselongue SX / LH



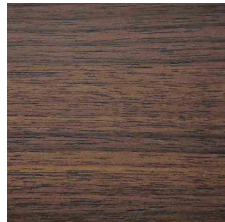
c.o.m. (l.mt.13,00/sq.mt.24,70)

Finiture / Finiture

Legno Noce / Wood Walnut



noce
walnut



noce dark
walnut dark

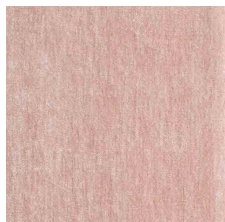


noce moka
walnut moka



noce brown
walnut brown

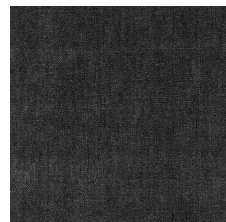
Tessuto Velluti e Ciniglie / Fabric Velvet and Chenille



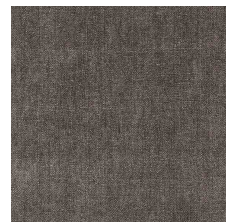
Belsuede-029



Belsuede-032



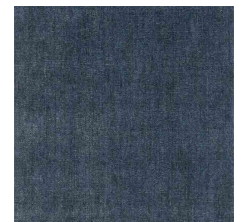
Belsuede-015



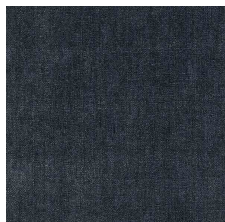
Belsuede-014



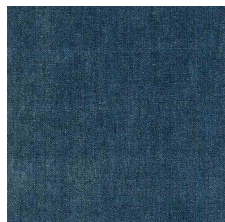
Belsuede-01



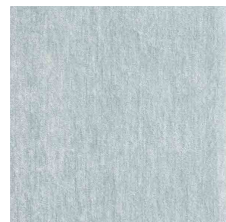
Belsuede-036



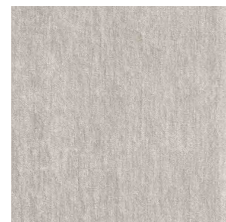
Belsuede-016



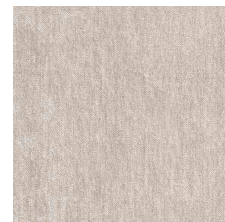
Belsuede-017



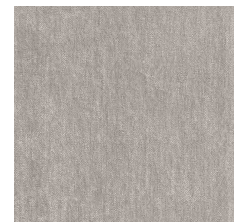
Belsuede-040



Belesuede-034



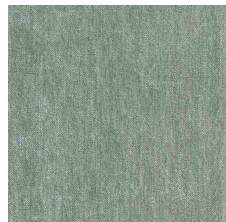
Belsuede-010



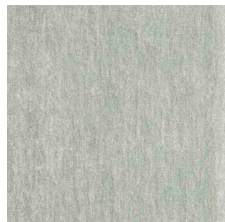
Belsuede-011

Finiture / Finiture

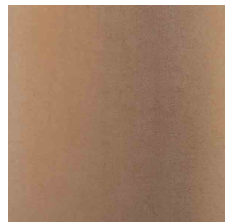
Tessuto Velluti e Ciniglie / Fabric Velvet and Chenille



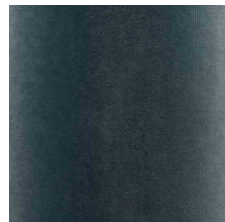
Belsuede-012



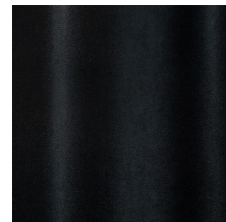
Belsuede-039



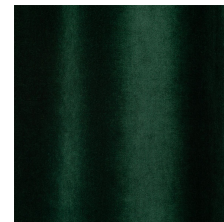
Amazonie-041



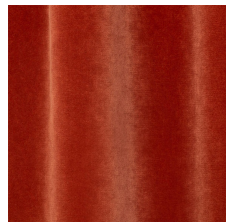
Amazonie-042



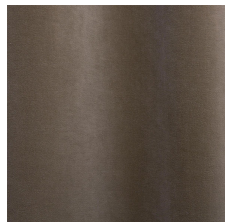
Amazonie 002



Amazonie 022



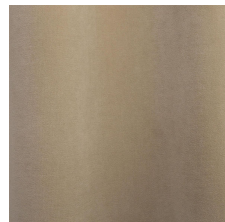
Amazonie 025



Amazonie 045



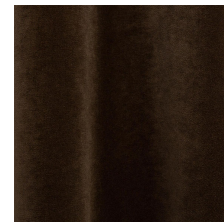
Amazonie 040



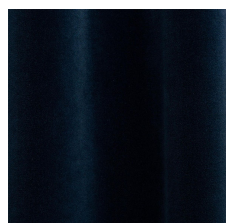
Amazonie 043



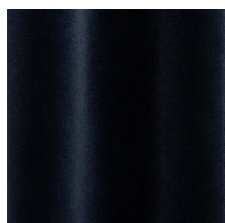
Amazonie 036



Amazonie 038



Amazonie 037



Amazonie 035

Tessuto / Fabric Bouclé



Verone Creme



Monza 00



Mies-005



Monza 09



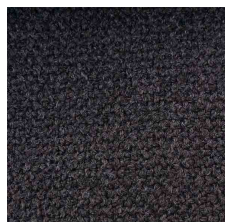
Mies-004



Monza 07



Monza 97



Monza 84



Monza 58



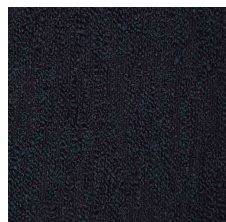
Monza 27



Monza 48



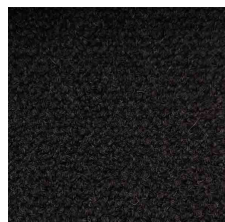
Monza 45



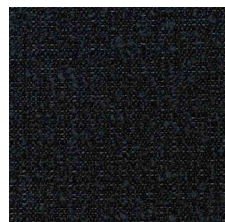
Verone Nuit



Mies-020



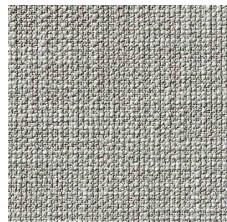
Monza 88



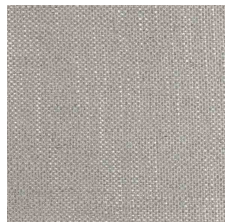
Mies-008

Finiture / Finiture

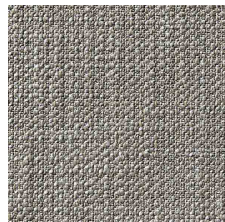
Tessuto Vari / Fabric Various



Gypsy-892



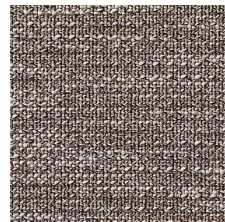
Flair-108



Gypsy-895



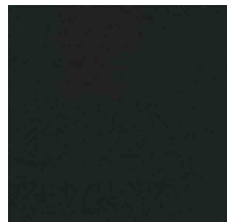
Divina 3 224



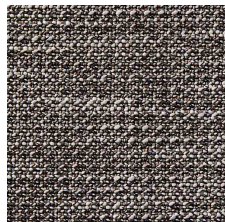
Oxford-893



Grisaille-004



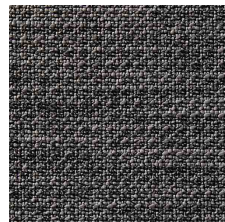
Divina 3-191



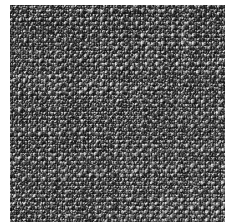
Oxford-897



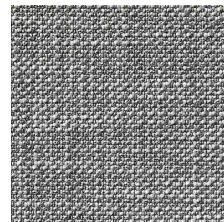
Flair-121



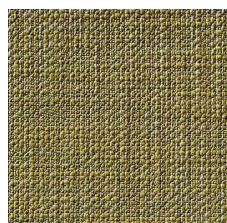
Oxford-999



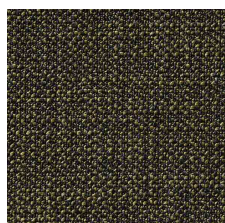
Gypsy-997



Gypsy-995



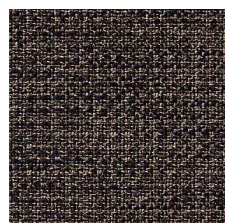
Gypsy-184



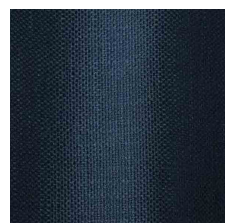
Gypsy-799



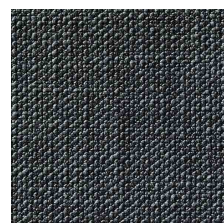
Flair 166



Oxford-889

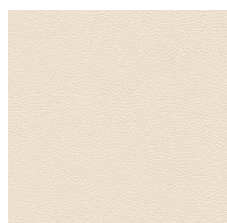


Flair-164

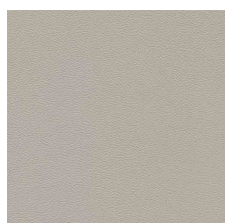


Gypsy-699

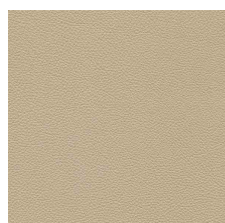
Pelle / Leather Color Sphere PF



SC 06 Calicot



SC 23 Tortora



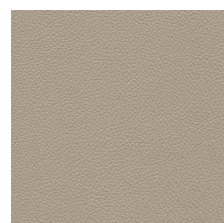
SC 32 Caolino



SC 51 Panna



SC 31 Quarzo Fumè



SC 34 Maggese



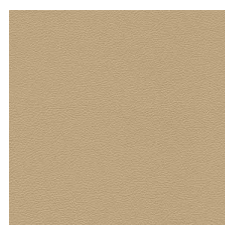
SC 26 Topo



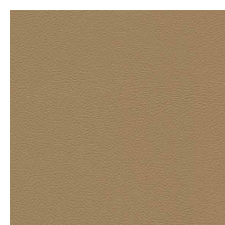
SC 20 Inchiostro



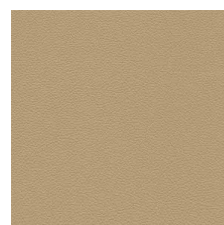
SC 21 Amianto



SC 53 Creta



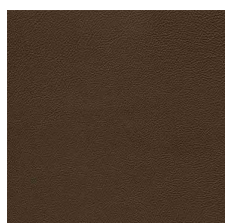
SC 55 Camel Hair



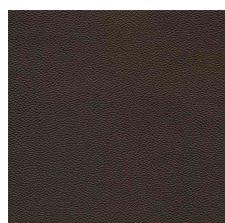
SC 52 Daino



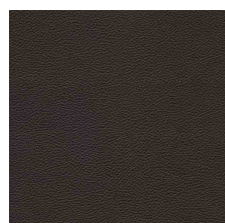
SC 66 India



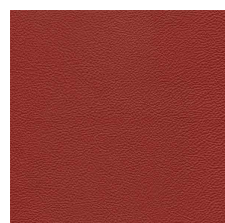
SC 59 Noce di Pecan



SC 80 Bruno Havana



SC 29 Ardesia



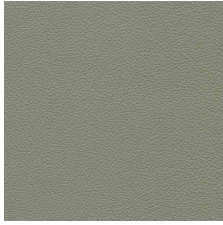
SC 148 Lacca



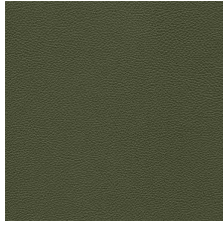
SC 146 Coccio Pesto

Finiture / *Finiture*

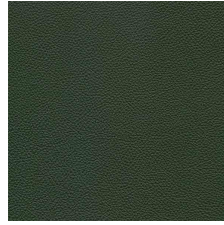
Pelle / *Leather Color Sphere PF*



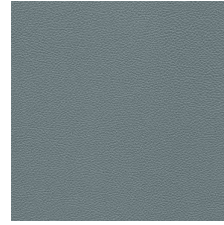
SC 173 Glauco



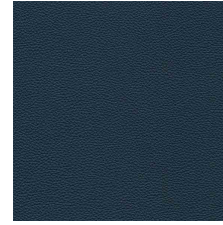
SC 177 Limo



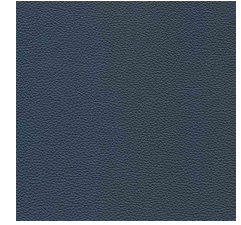
SC 178 Alpi



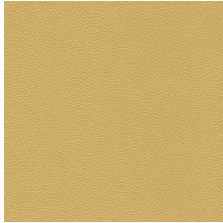
SC 254 Steel Blue



SC 278 Atlantic Blue

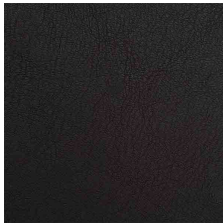


SC 279 Alchemy



SC 133 Paglierino

Pelle naturale / *Natural leather Acquario*



201 Testa di moro



202 Antracite



204 Fango

Pelle naturale / *Natural leather Nabuk*



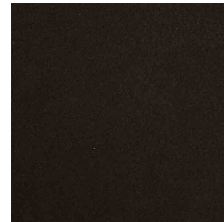
Nabuk Grigio



Nabuk Conchiglia



Nabuk Seppia



Nabuk Marrone Scuro