

Ø60 ceramic 6 mm



Coffee table Ø60x56h

ØK66  
teak brushed



ØK60  
teak nero



designed by

**Gerd Couckhuyt**

6K66  
perla



6K70  
basalt grey



Trespa®



## Available in

### TABLE BASE

Powder coated stainless steel



SF13  
flint



SF10  
lava



SF08  
white

### TABLE TOP

Ceramic 12 mm



5K67  
basalt black



5K53  
fossil



5K54  
travertin geo



5K59  
marble black



5K68  
concrete



5K69  
emperador



5K66  
perla



5K58  
marble white

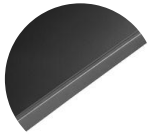
# Mood

Coffee table Ø60x56h



designed by

**Gerd Couckhuyt**



2T92  
black



2T90  
white

# Mood

Coffee table Ø60x56h

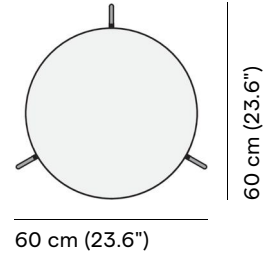
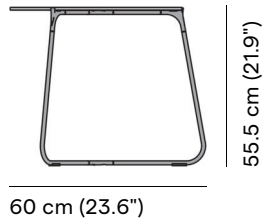
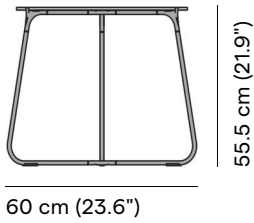


designed by

**Gerd Couckhuyt**



## Technical drawing



## Maintenance

To maintain and protect your Manutti pieces, we've developed a series of products that will guarantee their extended lifespan and your carefree enjoyment for many years to come.

- [Manutti Care line kit](#)
- [Cushion Boxes](#)
- [Protective Covers](#)

# Mood

Coffee table Ø60x56h



designed by

## Gerd Couckhuyt



## More in this collection



[VIEW COLLECTION](#)

## Matching collections



# Manutti

manutti.com