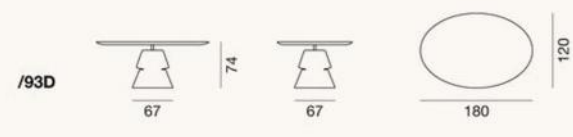
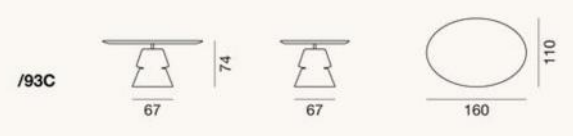
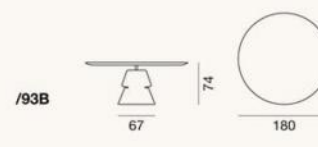
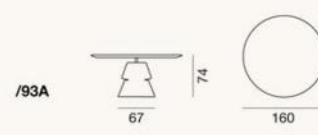
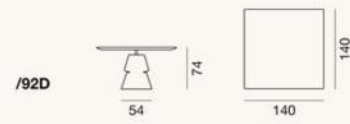
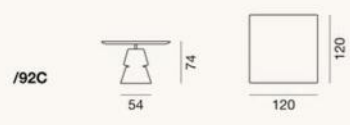
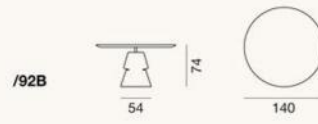
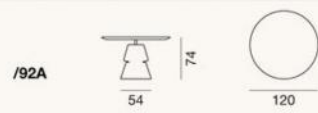


Dimensions

DS-615



Material

ARTISANO DS-TELA

Type

Core leather

Thickness

2,4 - 2,6 mm

Characteristics

Strong, firm and durable. The saddle leather is uniquely created by nature with its pattern of pores, grain and surface structure. Its qualities make it suitable for compact seating pieces or backrests as well as smooth surfaces such as bodies and sides.



black



cigarro



fango



naturale

ARTISANO DS-TELA

The surfaces of DS-TELA are coated with mixtures of stone or metal. Due to an intelligent and meticulously designed mix of materials the finished table tops function as a canvas to play on.



metal brass



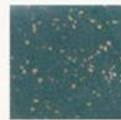
metal iron



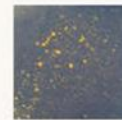
marble carrara



stone coral



stone jade



stone lapislazuli



marble beligan blue