

# KOSTER 150x80

S. Tollgard

2018



# KOSTER 150x80

S. Tollgard

2018

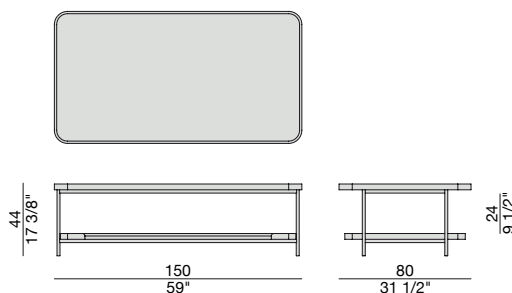
Tavolino rettangolare con struttura in metallo finitura Bronzoro e piani in frassino, oppure piano superiore in Rock e piano inferiore in frassino. Piedini in ottone spazzolato.

*Rectangular coffee table with metal frame in Bronzoro finish and tops in ash, or upper top in Rock and lower top in ash. End feet in brushed brass.*

*Rechteckiger Beistelltisch mit Metallgestell mit Bronzoro Finish und Ablagen in Esche, oder oberer Ablage in Rock und unterer Ablage in Esche.. Spitzen aus gebürstetem Messing.*

*Table basse rectangulaire avec structure en métal en finition Bronzoro et plateaux en frêne ou Plateau supérieur en Rock dans les coloris de la collection et plateau inférieur en frêne. Pieds en cuivre brossé.*

*Mesa de centro rectangular con estructura de metal en acabado Bronzoro y tapas de fresno o tapa superior en Rock en los colores de la colección y tapa inferior de fresno. Pies acabados en latón cepillado.*



# KOSTER 150x80

S. Tollgard

2018

## ESSENZE | *Essences*



**Frassino Naturale**  
Natural Ash



**Frassino**  
Ash  
*tinto/stained moka*



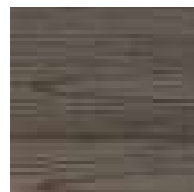
**Frassino**  
Ash  
*tinto noce canaletta*  
*canaletta walnut stained*



**Frassino**  
Ash  
*tinto/stained ængé*

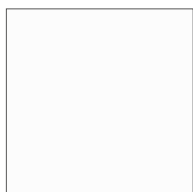


**Frassino**  
Ash  
*tinto/stained canapa*

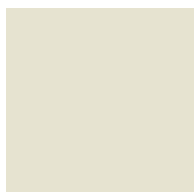


**Frassino**  
Ash  
*tinto/stained caffè*

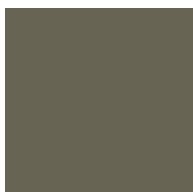
## LACCATO OPACO PORO APERTO | *Matt lacquered open pore*



**Bianco**  
White  
(RAL 9016)



**Avorio**  
Ivory  
(RAL 1013)



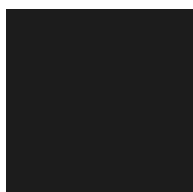
**Argilla**  
Mud  
(RAL 7006)



**Piombo**  
Lead  
(NCS S5005G20Y)



**Cioccolato**  
Chocolate  
(RAL 8019)



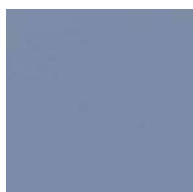
**Nero**  
Black  
(RAL 9005)



**Granata**  
Garnet red  
(NCS S4050Y90R)

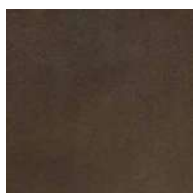


**Pistacchio**  
Pistachio green  
(PANTONE 5825)



**Avio**  
Aviation blue  
(PANTONE 5415)

## METALLO | *Metal*



**Bronzoro**

# KOSTER 150x80

S. Tollgard

2018

## PIANO | *Top*

Essenze | *Essences*



**Frassino Naturale**  
Natural Ash



**Frassino**  
Ash  
*tinto/stained moka*



**Frassino**  
Ash  
*tinto noce canaletta*  
*canaletta walnut stained*



**Frassino**  
Ash  
*tinto/stained wengé*

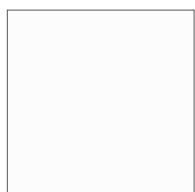


**Frassino**  
Ash  
*tinto/stained canapa*

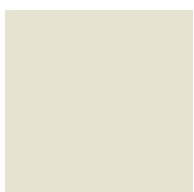


**Frassino**  
Ash  
*tinto/stained caffè*

## LACCATO OPACO PORO APERTO | *Matt lacquered open pore*



**Bianco**  
White  
(RAL 9016)



**Avorio**  
Ivory  
(RAL 1013)



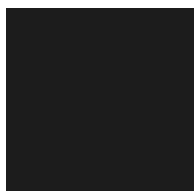
**Argilla**  
Mud  
(RAL 7006)



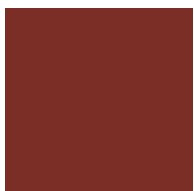
**Piombo**  
Lead  
(NCS S5005G20Y)



**Cioccolato**  
Chocolate  
(RAL 8019)



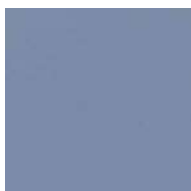
**Nero**  
Black  
(RAL 9005)



**Granata**  
Garnet red  
(NCS S4050Y90R)



**Pistacchio**  
Pistachio green  
(PANTONE 5825)

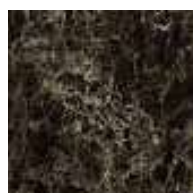


**Avio**  
Aviation blue  
(PANTONE 5415)

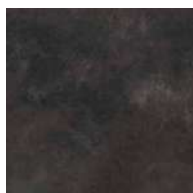
## Rock



**Calacatta**  
Calacatta



**Emperador**  
Emperador



**Oxide nero opaco**  
Matt oxide black