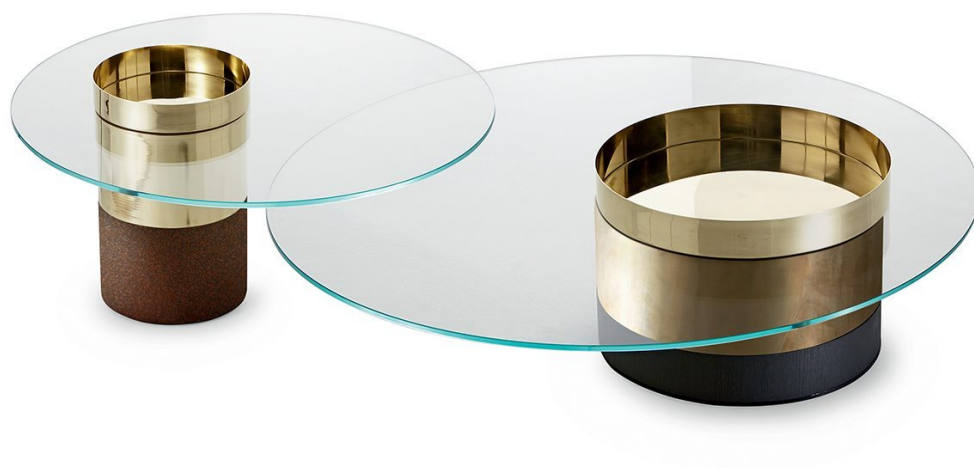

Haumea

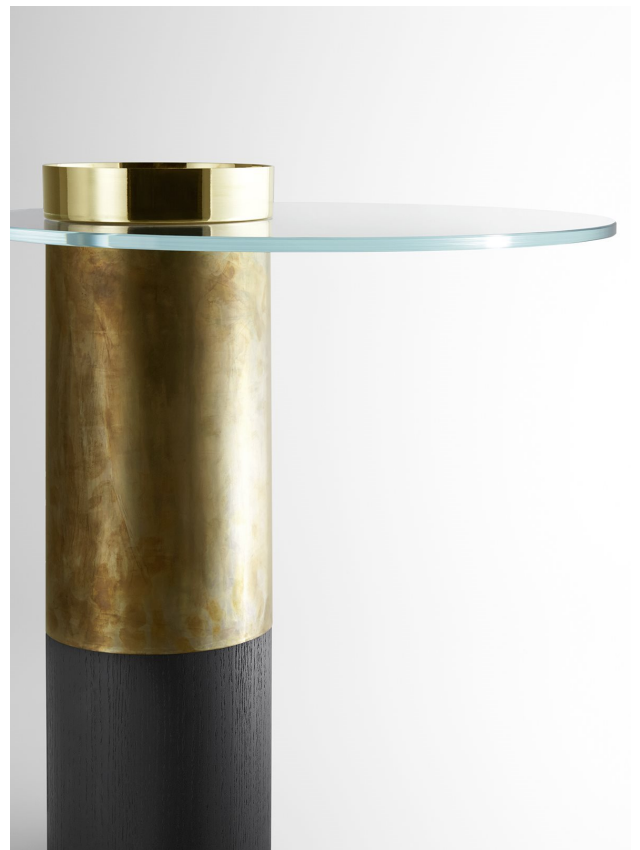
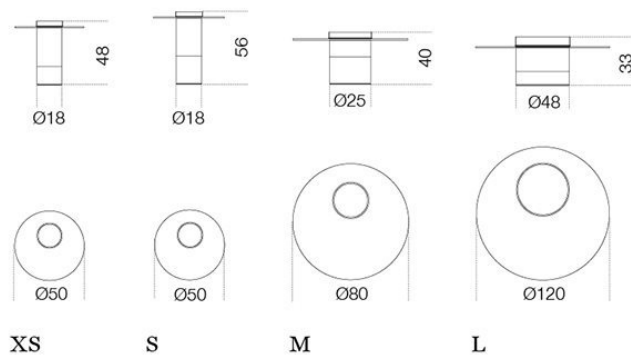
Massimo Castagna
2015



Tavolino con piano in cristallo trasparente
extralight temperato 10mm.
Base in legno laccato nero (mod. Layer) poro
aperto o ruggine.
Parti metalliche in ottone lucido, brunito a
mano, ramato o cromo nero.

Coffee table in 10 mm transparent extra light
tempered glass. Black (mod. Layer) open pore
or rust lacquered wooden base.
Bright brass, hand burnished brass, coppered
brass or black chromed metal parts.

Dimensioni / Sizes
Cm
Ø 50 x 48h XS
Ø 50 x 56h S
Ø 80 x 40h M
Ø 120 x 33h L

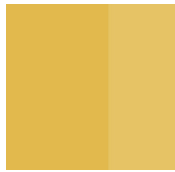




Metallo / Metal



Cromo nero
Black chrome



Ottone lucido
Bright brass



*Ottone brunito
a mano*
*Hand
burnished
brass*



Ottone ramato
Coppered brass

Legno / Wood



*Nero poro
aperto (Layer)*
*Black open pore
(Layer)*



Ruggine
Rust

Cristallo / Glass



Extralight
Extralight
