

DESCRIPTION OF THE QUALITY

Composition pile: Tibetan wool possibly combined with Chinese silk.

Pile structure: Combinations cut pile and loop pile.

Total thickness (approx.): 12 mm.

Exceptions: Rani silk, Rani double: 14 mm.

Pile height above ground fabric (approx.): 10 mm.

Exceptions: Rani silk, Rani double: 12 mm.

Structure back: Hand-knotted.

Material back: Tibetan wool possibly combined with Chinese silk.

Material weft: Cotton.

Material warp: Cotton.

Production method: Hand-knotted.

Child labour: The production of Casalis-carpets is carried out without the use of child labour.

Finish: Longer sides have been edged finely with Tibetan wool. On the shorter sides a thicker edging in Tibetan wool.

POSSIBILITIES COLLECTION

Rani plain: A plain, 100 % woollen carpet is possible.

The standard colours of the Rani plain are the same as for the Raja.

Rani structures: There are different line structures possible, in one or two colours. Rani silk and Rani double really come into their own in a single colour.

Rani designs: The collection contains three flower designs.

Non standard designs: Other designs can be created by combining Rani plain with various colour areas, side and pile height areas, cuts, structure areas or a combination of the possibilities mentioned.

Sizes: All carpets are made to measure, there are no standard sizes available. Very large sizes on request.

Possible shapes: Round, oval, polygonal etc.

Deviations to size and shape: Because Casalis carpets are made by hand, slight deviations in shape and size can occur. These imperfections are part and parcel of a carpet made by hand and consequently cannot be valid grounds for complaints.

Non standard colours:

- Based on our colour reference boxes.

- Based on a reference sample (e.g. piece of fabric).

- Size of available samples is 18 x 38 cm.

Colour differences: Slight colour differences between yarn batches are characteristic of dying natural materials and consequently cannot be valid grounds for complaints.

Tibetan wool is produced by hand in order to retain the lively character of the wool. Dying such a yarn results in a rich range of colour. A single-coloured Rani-carpet does not exist.

RANGE OF USES

	Rani plain	Rani lines silk C
	Rani lines wool	Rani lines silk L
	Rani honeycomb	Rani silk
	Rani broken lines	Rani double
	Rani shadow wool	Rani shadow silk
General	Heavy use	normal use.
Underneath dining table and chairs	Ok	Ok
With a sofa combination	Ok	Ok
In the bedroom	Ok	Ok
Public places: (e.g. hotel lobby)	Ok	Not Ok

Wet rooms (bathrooms etc): Not possible because of danger of rotting of the natural fibres.

On stairs: Possible.

Desk chairs on wheels: Not possible.

SPECIFIC USER INSTRUCTIONS

Receipt of new carpet: Upon receipt of the new carpet, immediately remove it from the plastic wrapping in order to avoid the formation of moisture and mould.

Smell: After production, Rani carpets are washed thoroughly in order to remove as much loose pile fibres and dirt as possible. Before transport the carpet is carefully wrapped in plastic in order to avoid any damage. It can take a few weeks for the carpet to reach its destination. The carpet will have been enclosed in plastic for a while and smell musty when unwrapped. This smell will disappear all by itself by airing the carpet.

Carpet protectors: We do recommend the use of carpet protectors, because these will divide the tension over several points.

Underlay: If there are no heavy objects on the carpet, an underlay will prevent it from moving.

Deviations in size: Casalis carpets are hand made. Shape and size can differ slightly. Don't have your carpet lined up with any straight seams in the floor, but have the carpet cover them, so that any irregularities are not noticed.

Discolouring of the floor: The back of the Rani-carpet has no influence on the floor underneath.

Use as wall-to-wall carpet: Rani can also be used as a wall-to-wall carpet. In that case, the carpet will be made in the shape of the surface of the floor with a little extra on the sides allowing it to be cut to size once in situ. Next, the carpet is glued to the floor or stretched between the walls. Stretching has the advantage that the carpet can be taken out again in a simple way. Ask a professional interior decorator which method is best suited to the room in question.

Fluffing: In the beginning, all carpets of spun pile will lose fibres. This is inherent to spun yarn and should reduce in time. Fluffing will last on average between 6 to 24 months, depending on user intensity (walking on, vacuum cleaning).

Ageing of the carpet: All objects are subject to ageing, as are carpets. Turning the carpet at regular intervals ensures even ageing.

SPECIFIC MAINTENANCE INSTRUCTIONS

Longer piles: In the beginning, larger pile threads can stick out above the surface of the carpet. These threads were not shorn during the finish. Trim them with scissors to the normal pile height.

How will the carpet age?

Changes in aspect of textile floor covering by means of the Hexapod tumbler test - ISO 10361 (2000).

Test results:

	GROUP A	GROUP B	GROUP C
General	Rani plain Rani lines wool Rani honeycomb Rani broken lines Rani Shadow wool	Rani lines silk C ... Rani lines silk L Rani shadow S	Rani silk ... Rani double
Weight loss after 12000 revolutions in %	-	0.25 ... 0.21	0.20 ... 0.14
Aspect changes after 12000 revolutions	3	2.5	2
Colour changes after 12000 revolutions	>2	>2	≤2
User class	Heavy	Normal	

Conclusion: Fluffing is limited to a minimum for all versions. Group A can be used in homes as well as in public places. The other qualities are perfect for use in homes, but less so for public spaces.

Can sunlight fade the carpet?

Lightfastness test- ISO 105 B02 (1994/Amd 1998 and 2000).

Test results:

Lightfastness average colour 4-6
Lightfastness pastel colours -

Conclusion: Rani is lightfast. Nevertheless, it is better not to expose carpets to direct sunlight.

What if a spark of fire hits the carpet?

Flammability of textile floor covering - US Commercial Standard: "Surface Flammability of Carpets and Rugs, Doc. FF 1-70".

Test results: The maximum distance between the centre of the burning pill and the damaged area is 8.9 mm. The flame spread with approx 5 mm.

Conclusion: The flame won't spread far and is no danger to other surrounding objects. However, a spark will leave an ugly burn mark on the carpet. Always be careful with fire and screen your carpet from the open fire.

How visible are the imprints of e.g. chair or table legs?

Static tension - ISO 3416 (1975).

Test results: After 24 hrs the depth of imprint is between 0.62 mm and 1.38 mm.

Conclusion: Tibetan wool has lots of resilience. Imprints are limited. We do recommend the use of carpet protectors, because these will divide the tension over several points.

Can the carpet be combined with underfloor heating?

Thermal conductivity with the Tecosy-device: 1 plate method.

Test results: The thermal conductivity has been measured with the Tecosy-device and is between 0.0764 mm and 0.11 mm for Rani.

Conclusion: The Rani-quality has a low insulation value. It should not be a problem to combine the carpet with underfloor heating, not even when used as wall-to-wall carpet or rug with a surface larger than 60 % of the total surface of the floor. Nevertheless, ask your architect or installer for advice, because several aspects can influence the efficiency of underfloor heating.

If the carpet is used in combination with underfloor heating it is advisable to moisten it with a plant spray at regular intervals to avoid dehydration. The carpet will look fresher and will be less fluffy.

LINES



PLAIN





RANI LINES SILK C



RANI LINES SILK L



RANI SILK



RANI PLAIN



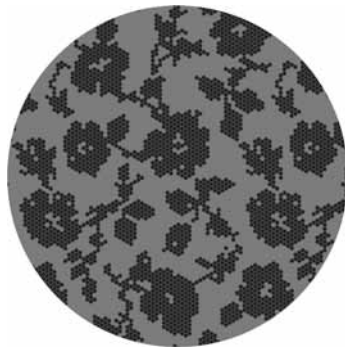
RANI DOUBLE



RANI LINES WOOL



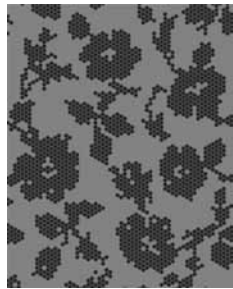
250x250 round



300x300 round



200x300 oval



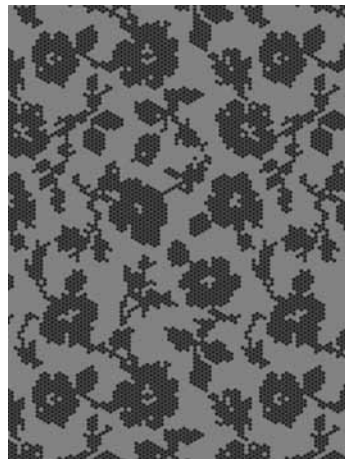
200x250



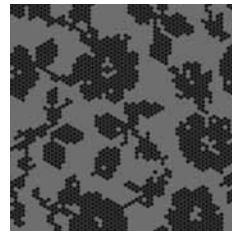
200x300



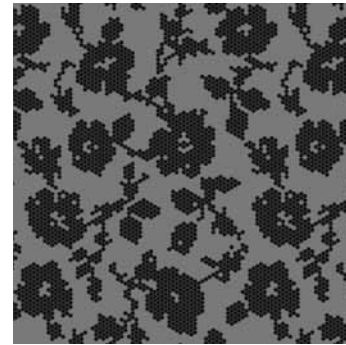
250x300



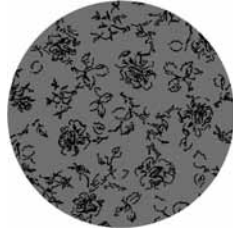
300x400



200x200



300x300



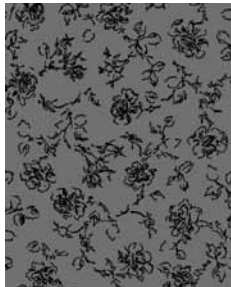
200x200 round



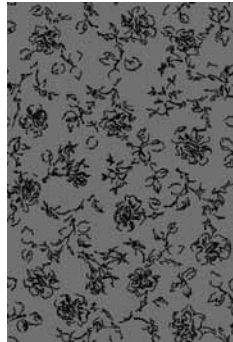
300x300 round



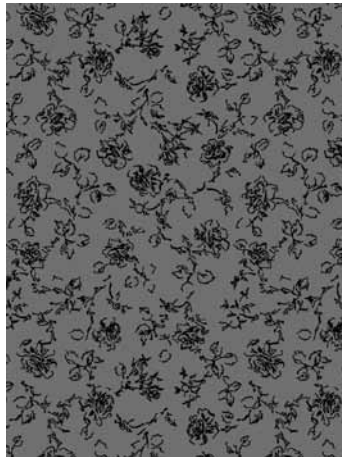
250x300 oval



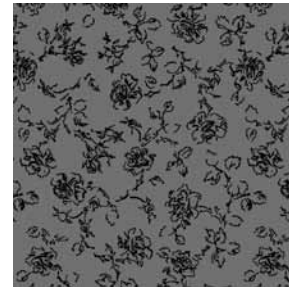
200x250



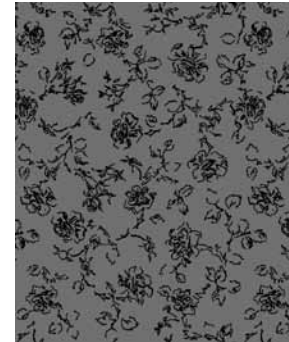
200x300



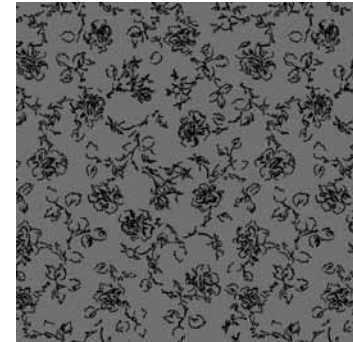
300x400



250x250



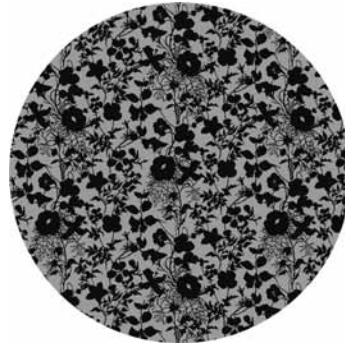
250x300



300x300



200x200 round



300x300 round



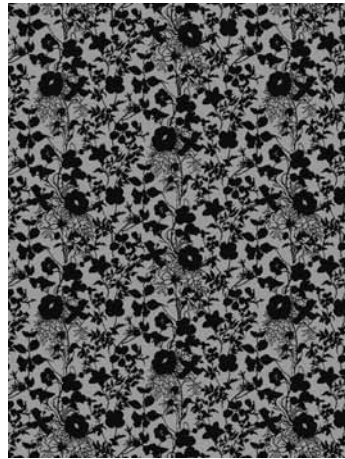
250x350 oval



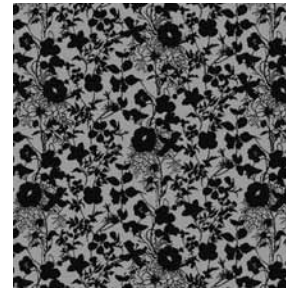
200x250



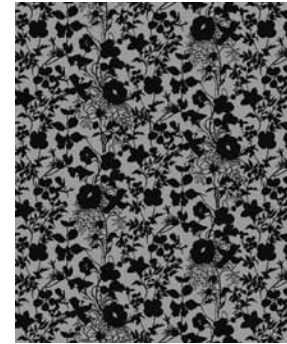
200x300



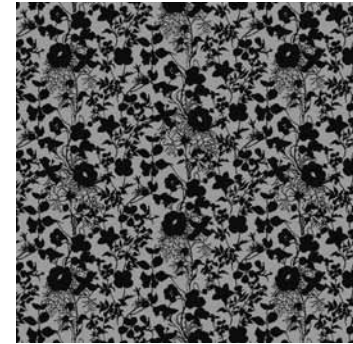
300x400



250x250



250x300



300x300