

## Description of the quality

**Composition pile:** Tibetan wool possibly combined with Chinese silk.

**Pile structure:** Cut pile.

**Total thickness (approx.):**

Normal: 13 mm (up).

Possible in areas. 11 mm (down).

**Pile height above ground fabric (approx.):**

Normal: 11 mm (up).

Possible in areas. 9 mm (down).

**Structure back:** Hand-knotted.

**Material back:** Tibetan wool possibly combined with Chinese silk.

**Material weft:** Cotton.

**Material warp:** Cotton.

**Production method:** Hand-knotted.

**Child labour:** The production of Casalis-carpet is carried out without the use of child labour.

**Finish:** On the longer side a very fine edging in Tibetan wool. On the shorter sides a thicker edging in Tibetan wool.

## POSSIBILITIES COLLECTION

**Designs:** The collection does contain a few standard designs, but there are more designs possible by using different colour areas, side areas, pile height areas, cuts or a combination of the above mentioned possibilities.

**Sizes:** All carpets are made to measure, there are no standard sizes available. Very large sizes available on request

Deviations to size and shape: Because Casalis carpets are made by hand, slight deviations in shape and size can occur. These imperfections are part and parcel of a carpet made by hand and consequently cannot be valid grounds for complaints.

**Possible shapes:** Round, oval, polygonal etc.

**Non standard colours:**

- Based on our colour reference boxes.

- Based on a reference sample (e.g. piece of fabric).

- Size of available samples is 18 x 38 cm.

**Colour differences:** Slight colour differences between yarn batches are characteristic of dying natural materials and consequently cannot be valid grounds for complaints. Tibetan wool is produced by hand in order to retain the lively character of the wool. Dying such a yarn results in a rich range of colour. A single-coloured Raja-carpet does not exist.

## RANGE OF USES

**General:** Heavy use allowed.

Underneath dining table and chairs

With a sofa combination

In the bedroom

Public places (e.g. hotel lobby)

**Wet rooms (bathrooms etc):** Not possible because of danger of rotting of the natural fibres.

**On stairs:** Possible.

**Desk chairs with wheels:** Not possible.

## SPECIFIC USER INSTRUCTIONS

**Receipt of new carpet:** Upon receipt of the new carpet, immediately remove it from the plastic wrapping in order to avoid the formation of moisture and mould.

**Smell:** After production, Raja carpets are washed thoroughly in order to remove as much loose pile fibres and dirt as possible. Before transport the carpet is carefully wrapped in plastic in order to avoid any damage. It can take a few weeks for the carpet to reach its destination. The carpet will have been enclosed in plastic for a while and smell musty when unwrapped. This smell will disappear all by itself by airing the carpet.

**Carpet protectors:** We do recommend the use of carpet protectors, because these will divide the tension over several points.

**Underlay:** If there are no heavy objects on the carpet, an underlay will prevent the carpet from moving.

**Deviations in size:** Casalis carpets are hand made. Shape and size can differ slightly. Don't have your carpet lined up with any straight seams in the floor, but have the carpet cover them, so that any irregularities are not noticed.

**Discolouring of the subfloor:** The back of the carpet has no influence on the floor underneath.

**Use as wall-to-wall carpet:** This quality can also be used as a wall-to-wall carpet. In that case, the carpet will be made in the shape of the surface of the floor with a little extra on the sides allowing it to be cut to size once in situ. Next, the carpet is glued to the floor or stretched between the walls. Stretching has the advantage that the carpet can be taken out again in a simple way. Ask a professional interior decorator which method is best suited to the room in question.

**Fluffing:** In the beginning, all carpets of spun pile will lose fibres. This is inherent to spun yarn and should reduce in time. Fluffing will last on average between 6 to 24 months, depending on user intensity (walking on, vacuum cleaning).

**Ageing of the carpet:** All objects are subject to ageing, as are carpets. Turning the carpet at regular intervals ensures even ageing.

## SPECIFIC MAINTENANCE INSTRUCTIONS

**Longer piles:** In the beginning, larger pile threads can stick out above the surface of the carpet. These threads were not shorn during the finish. Trim them with scissors to the normal pile height.

### How will the carpet age?

Changes in aspect of textile floor covering by means of the Hexapod tumbler test - ISO 10361 (2000).

**Test results:**

Weight loss after 12000 revolutions in % 0,81

Aspect changes after 12000 revolutions 3

Colour changes after 12000 revolutions >2

User class Heavy

**Conclusion:** Raja is not fluffy at all. The quality is suitable for use in homes and public spaces.

### Can sunlight fade the carpet?

Lightfastness test - ISO 105 B02 (1994/Amd 1998 and 2000).

**Test results:**

Lightfastness average colour 5-6

Lightfastness light colours 6

**Conclusion:** Raja is lightfast. Nevertheless, it is better not to expose carpets to direct sunlight.

## What if a spark of fire hits the carpet?

Flammability of textile floor covering- US Commercial Standard: "Surface Flammability of Carpets and Rugs, Doc. FF 1-70".

**Test results:** The maximum distance between the centre of the burning pill and the damaged area is 8.4 mm.

The flame spread with approx 4 mm.

**Conclusion:** The flame won't spread far and is no danger to other surrounding objects. However, a spark will leave an ugly burn mark on the carpet. Always be careful with fire and screen your carpet from the open fire.

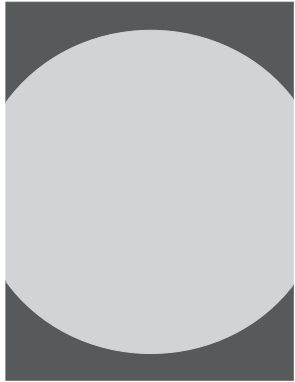
## How visible are the imprints of e.g. chair or table legs?

Static tension - ISO 3416 (1975).

**Test results:** After 24 hrs, Raja has in impression depth of only 1.68 mm. That is very low.

**Conclusion:** Tibetan wool has lots of resilience. Imprints will be limited. We do recommend the use of carpet protectors, because these will divide the tension over several points.





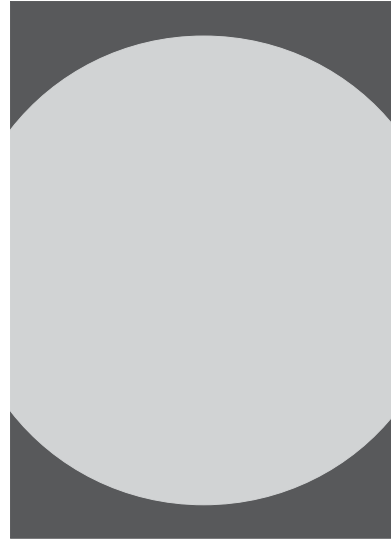
190x250



210x290



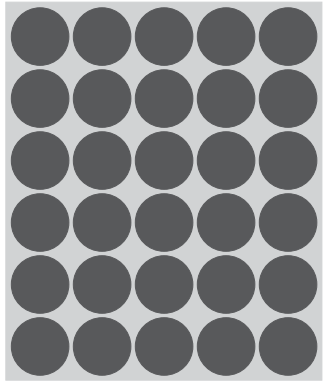
240x320



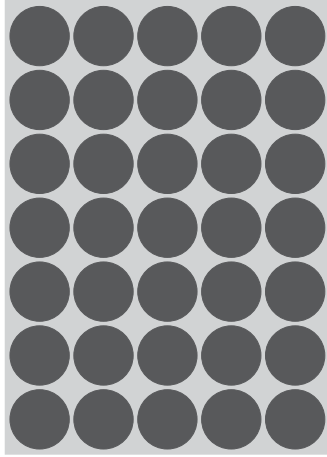
255x355



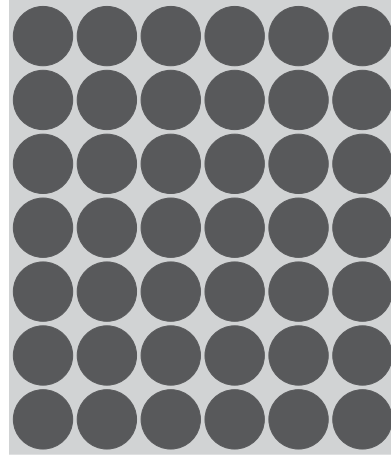
300x400



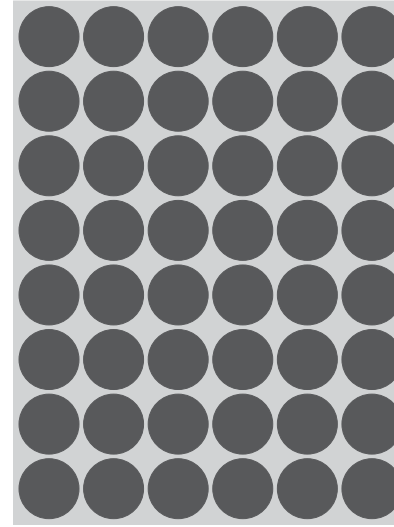
210x250



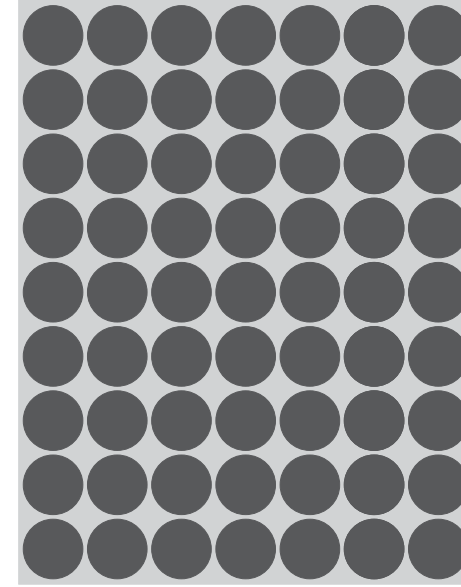
215x300



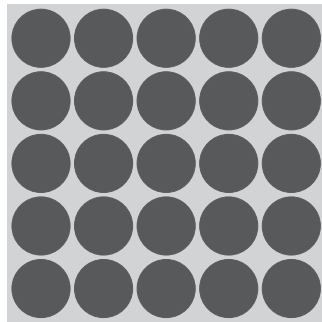
255x300



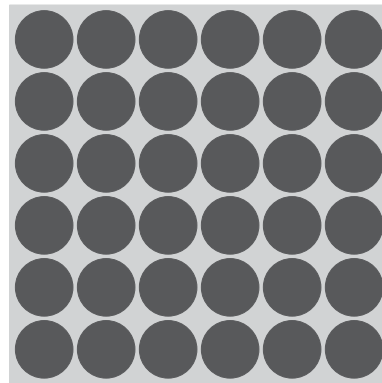
260x345



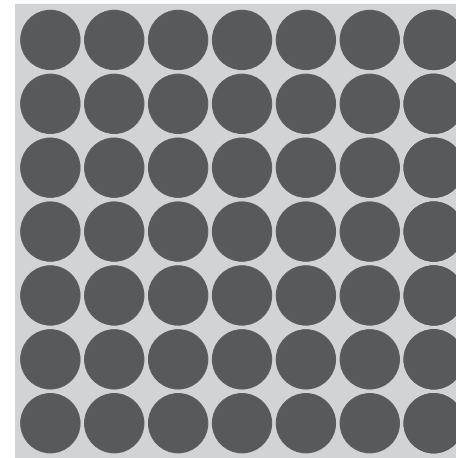
300x385



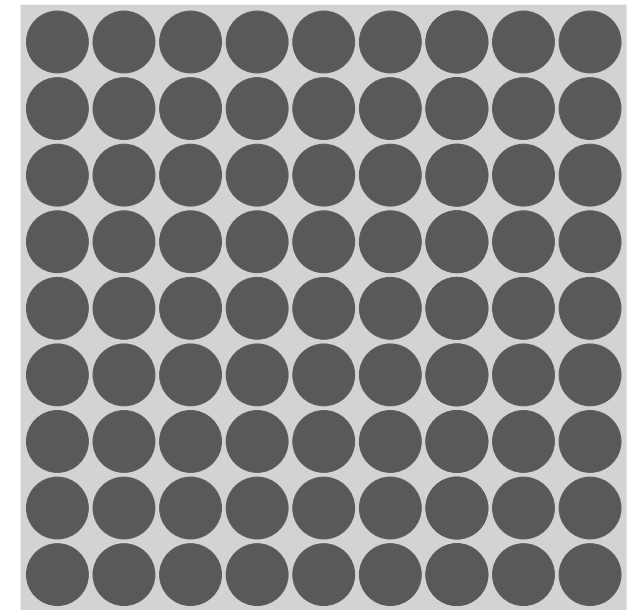
210x210



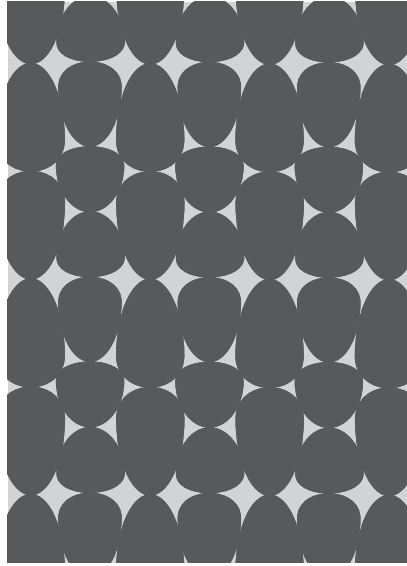
250x250



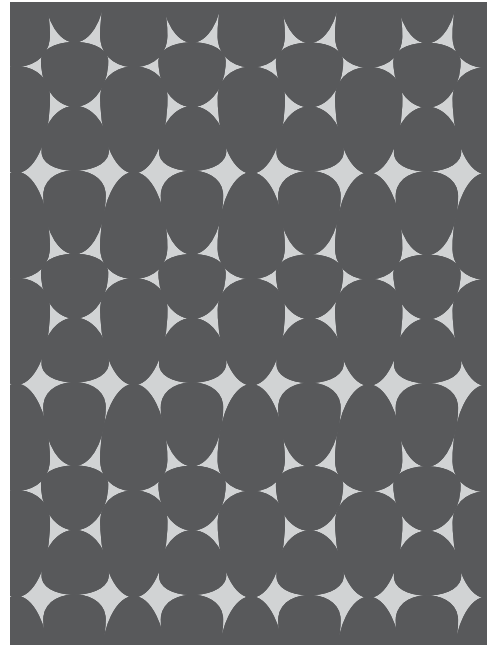
300x300



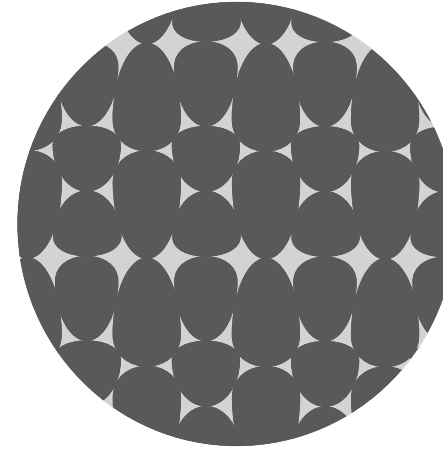
400x400



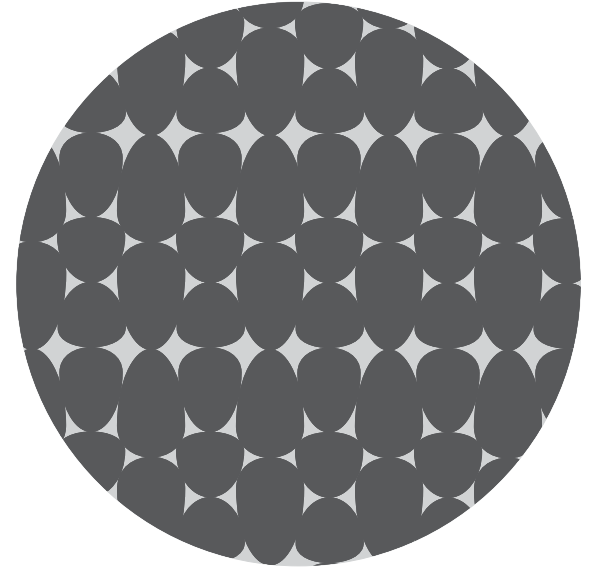
250x350



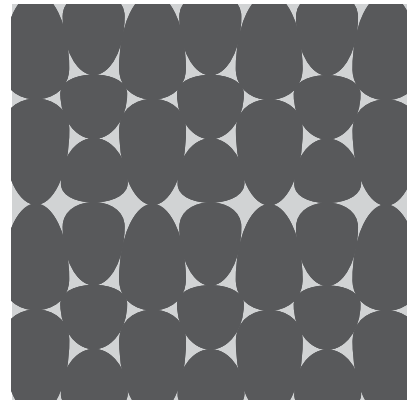
300x400



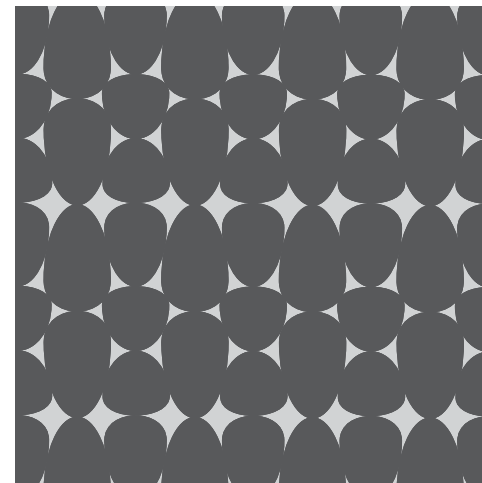
200 círculo  
250 círculo



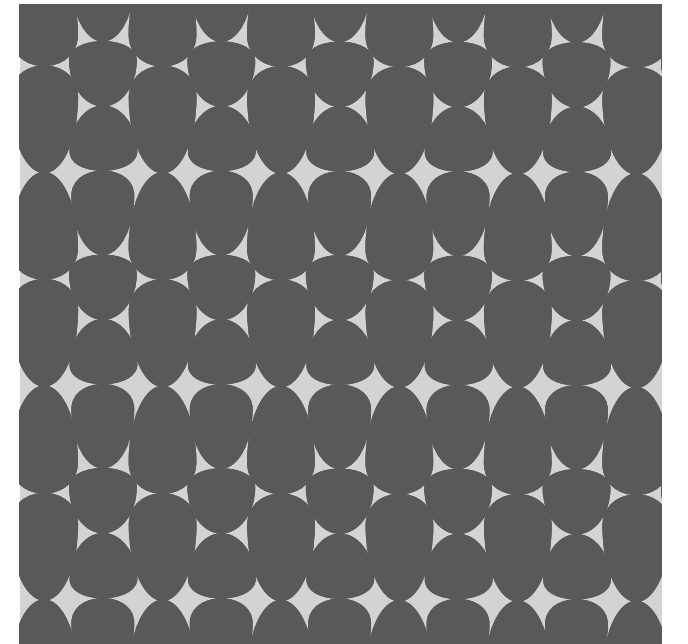
300 círculo  
350 círculo  
400 círculo



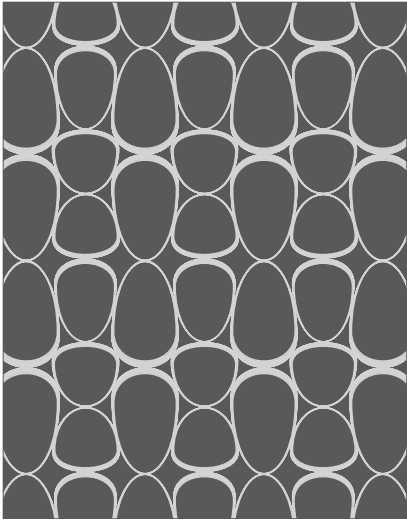
250x250



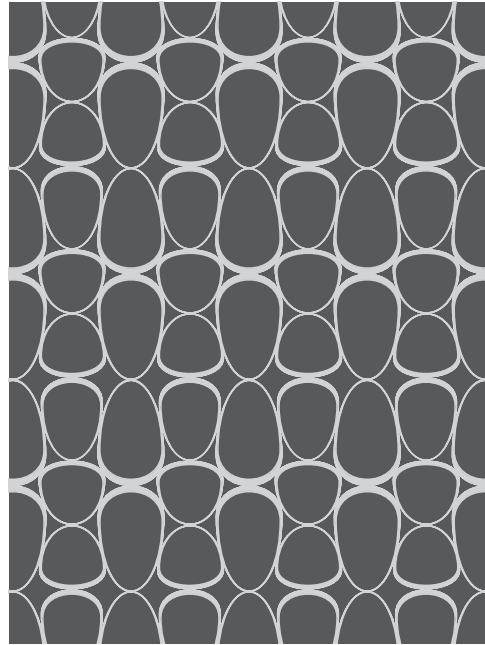
300x300



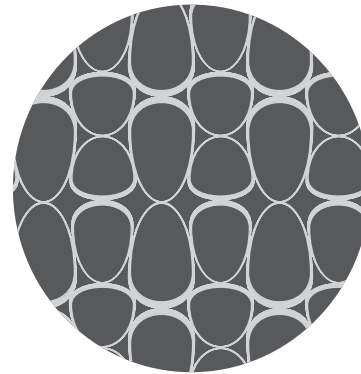
400x400



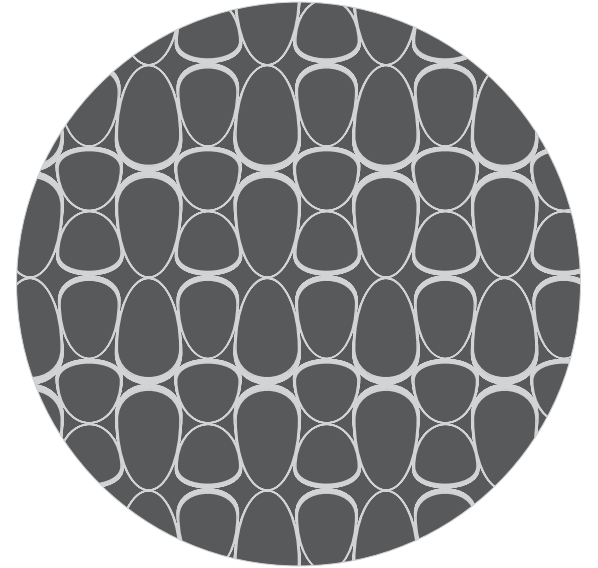
250x320



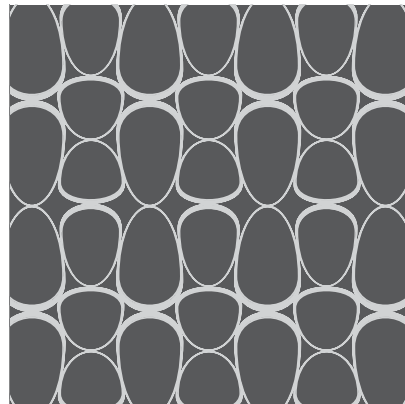
300x400



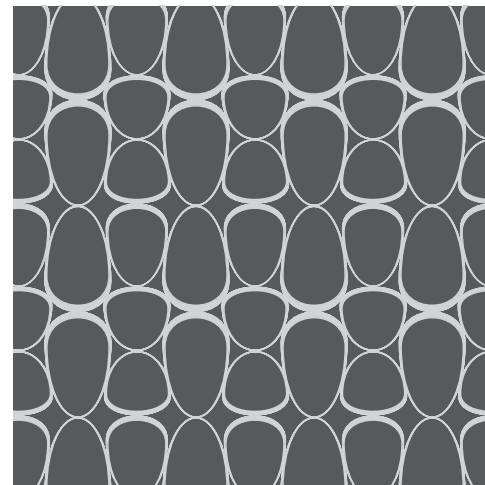
200 círculo  
250 círculo



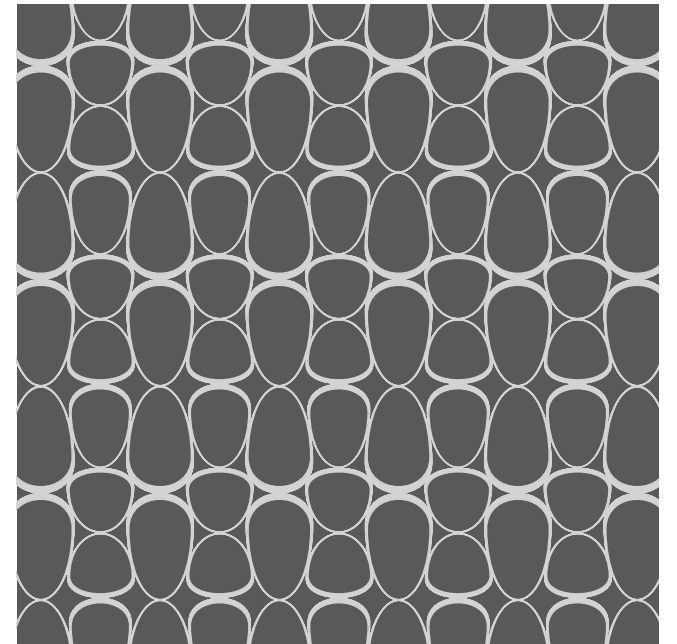
300 círculo  
350 círculo  
400 círculo



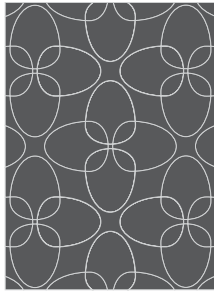
250x250



300x300



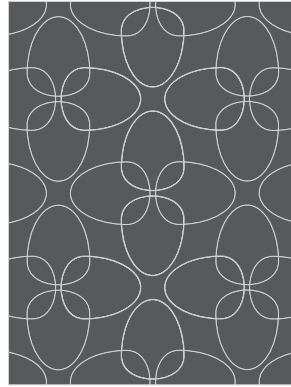
400x400



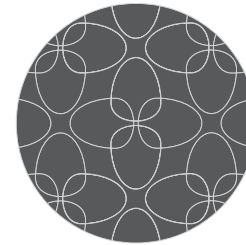
220x300



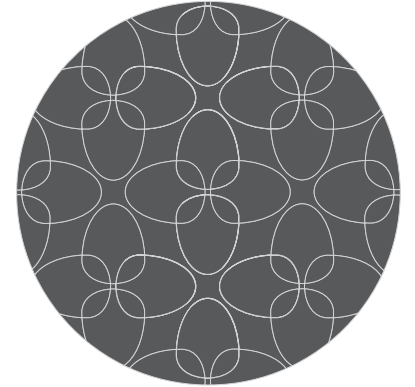
250x350



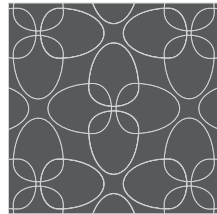
300x400



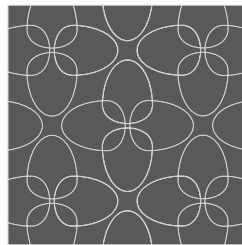
220 círculo  
250 círculo



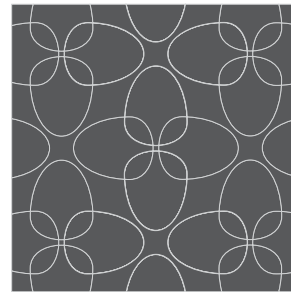
300 círculo  
400 círculo



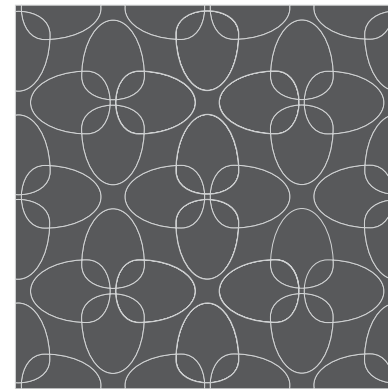
220x220



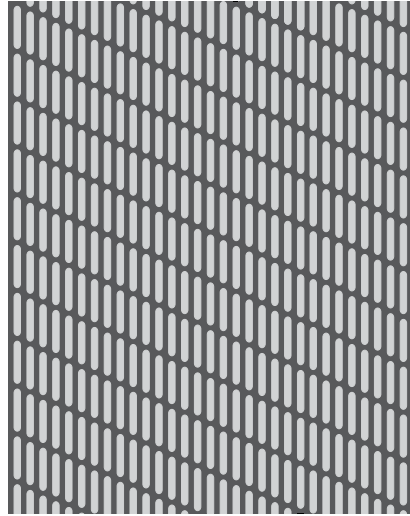
250x250



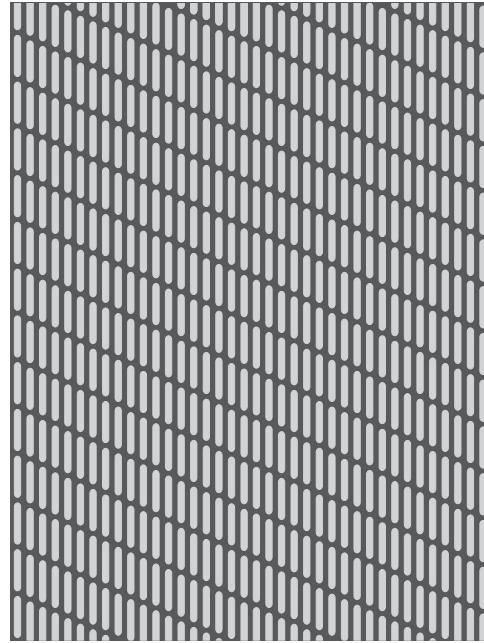
300x300



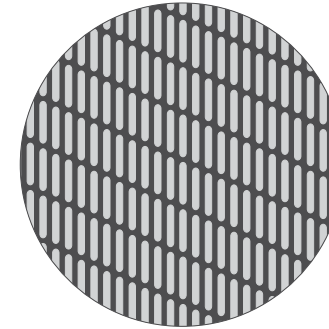
400x400



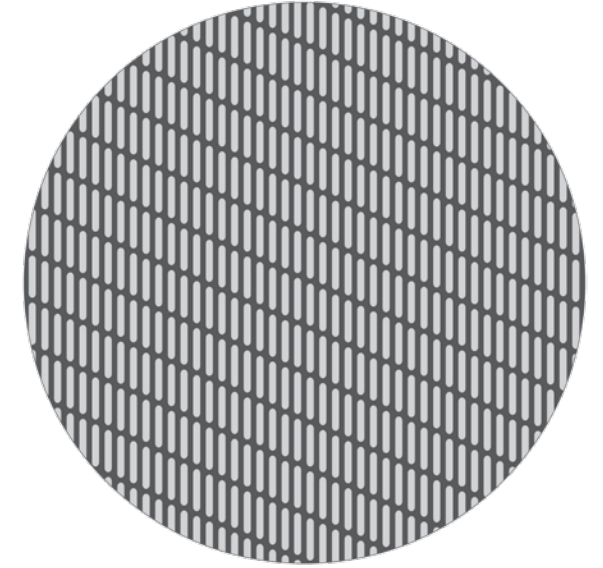
250x320



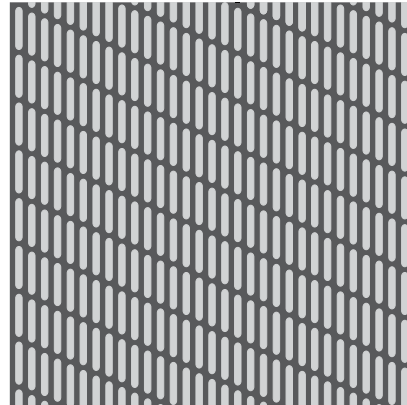
300x400



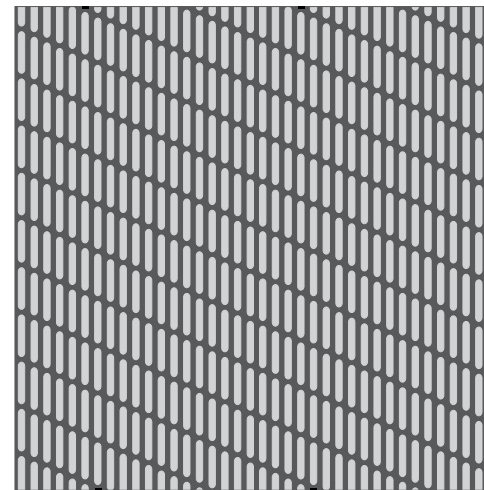
200 círculo  
250 círculo



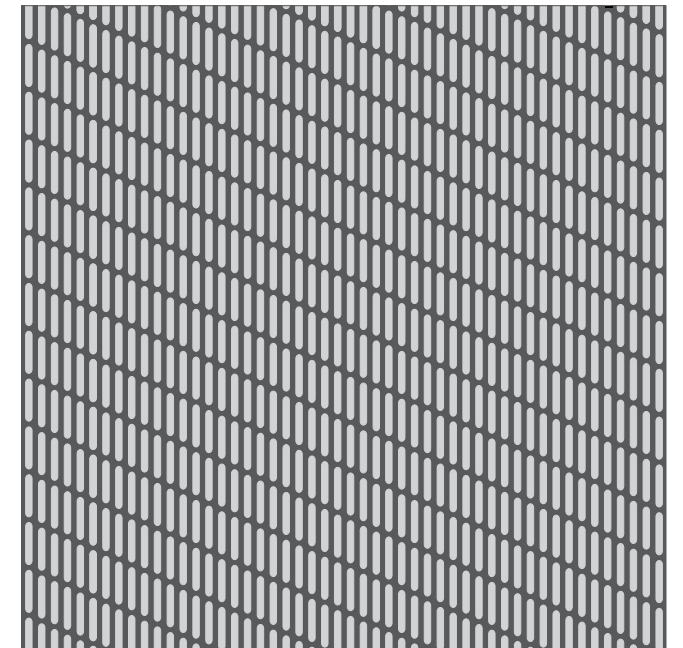
300 círculo  
350 círculo  
400 círculo



250x250

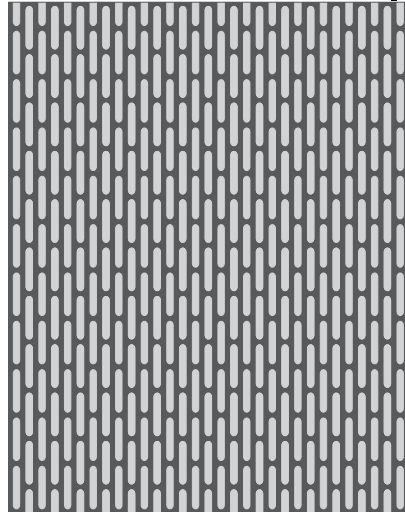


300x300

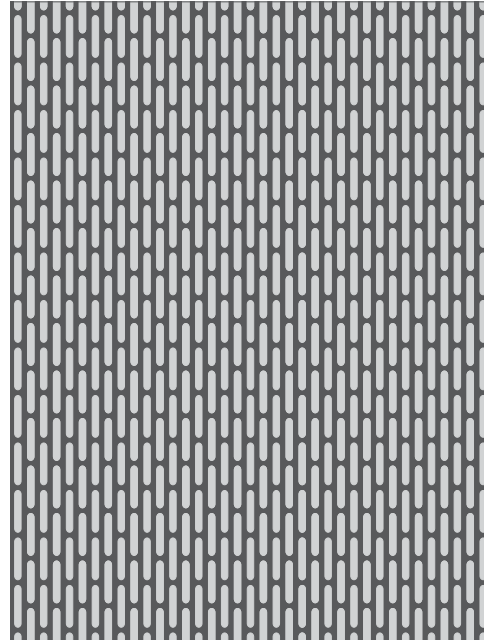


400x400

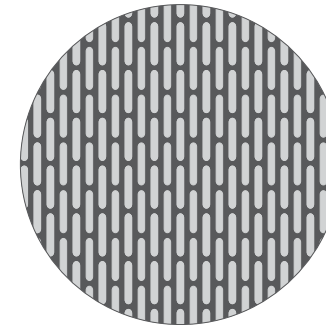




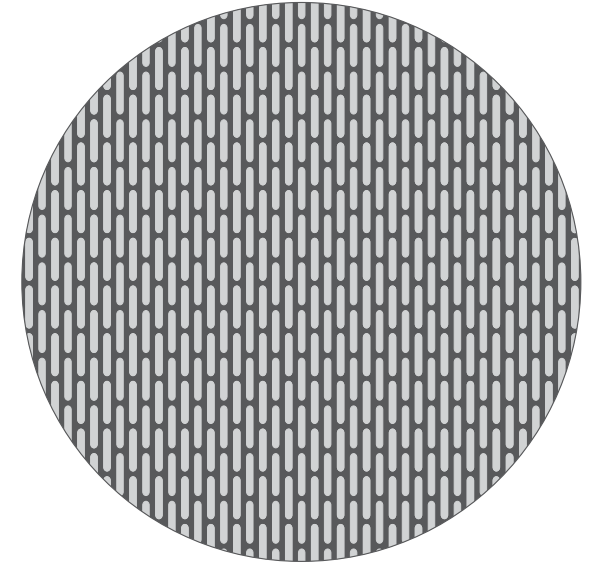
250x320



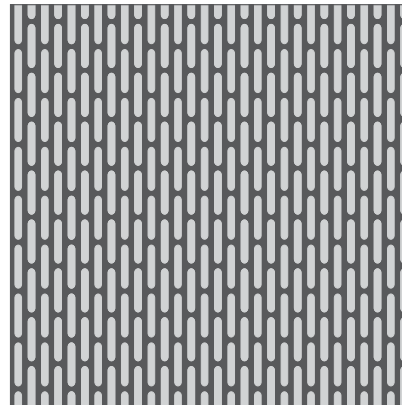
300x400



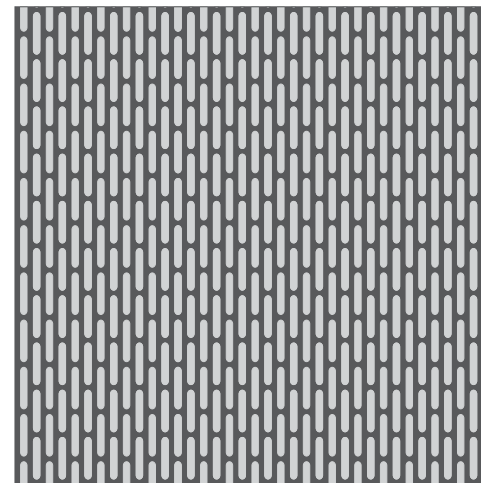
200 círculo  
250 círculo



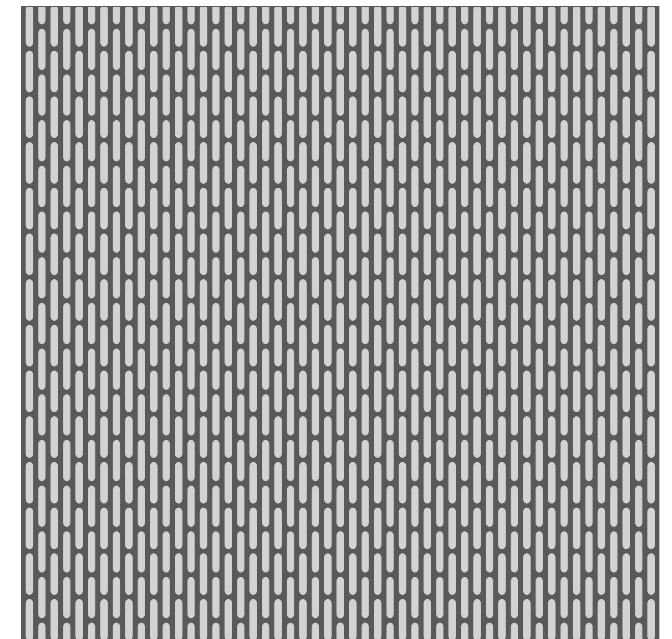
300 círculo  
350 círculo  
400 círculo



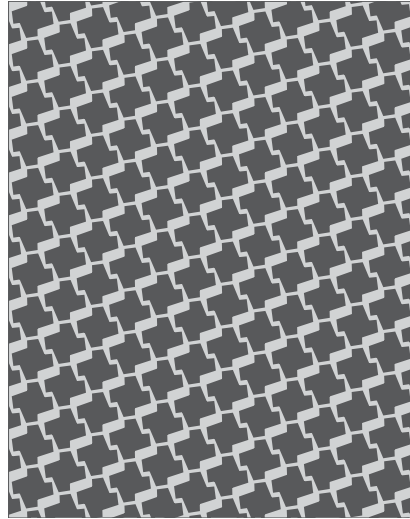
250x250



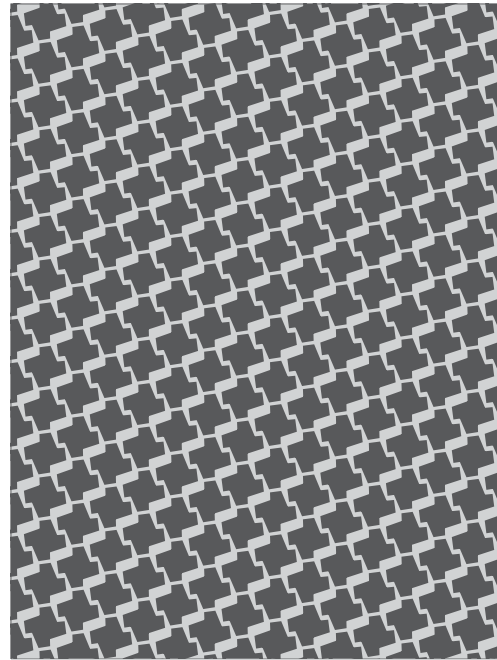
300x300



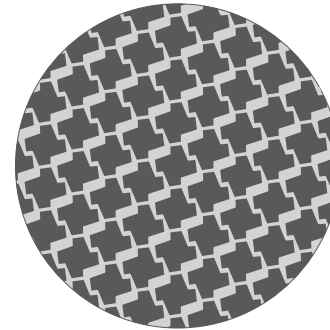
400x400



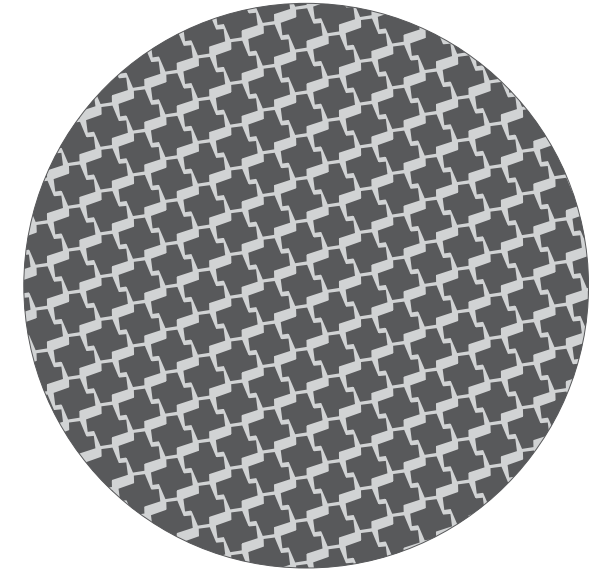
250x320



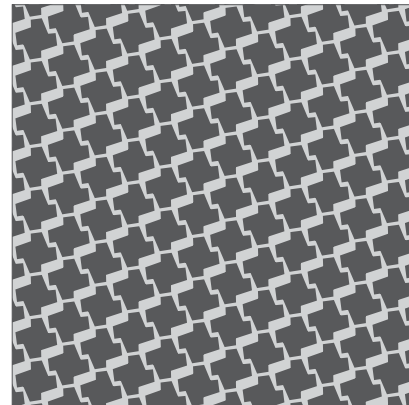
300x400



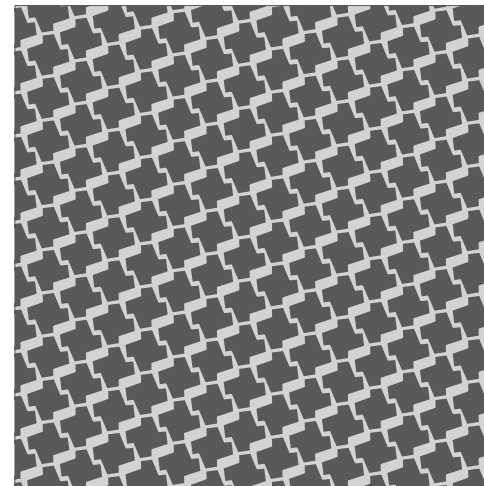
200 círculo  
250 círculo



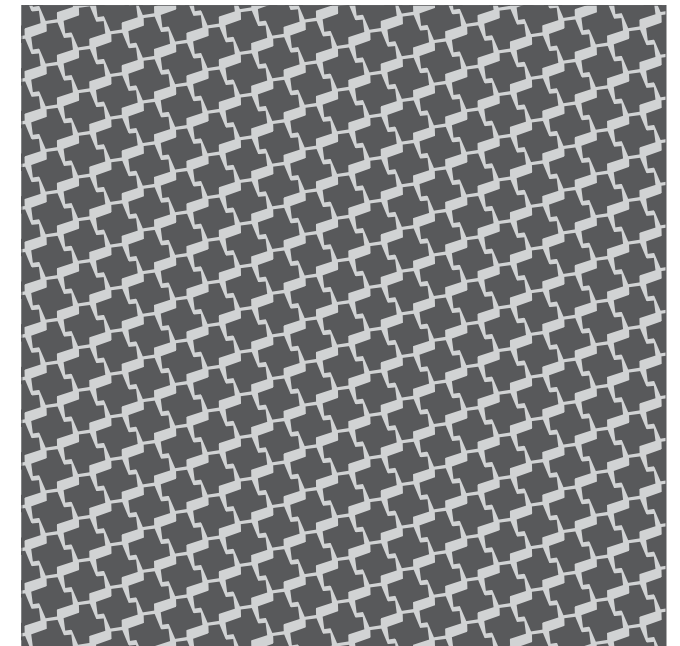
300 círculo  
350 círculo  
400 círculo



250x250



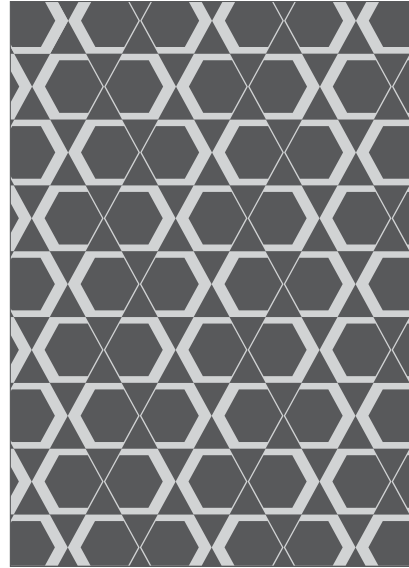
300x300



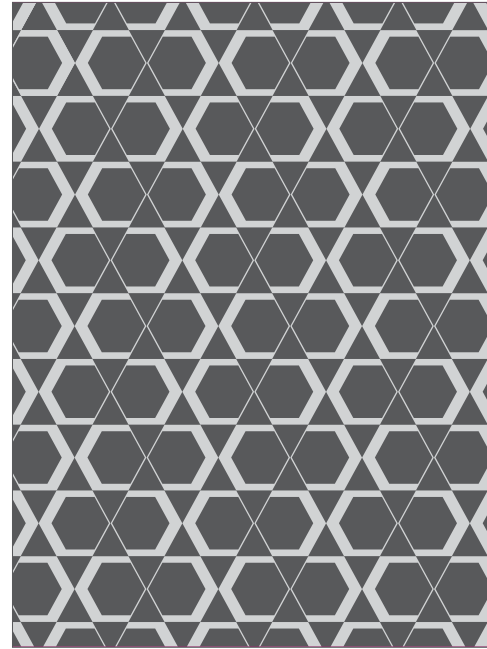
400x400



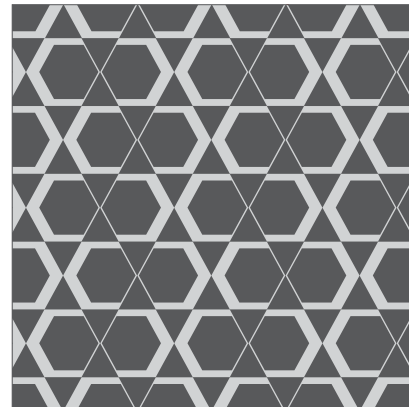
250x320



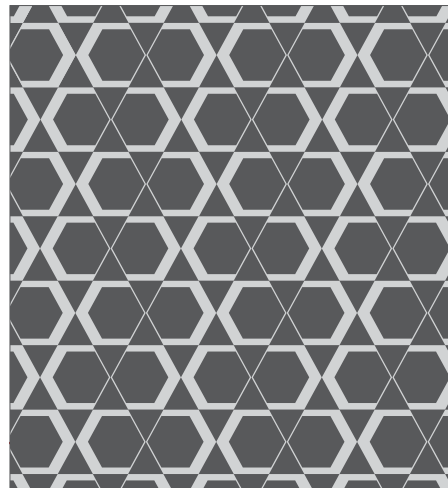
250x350



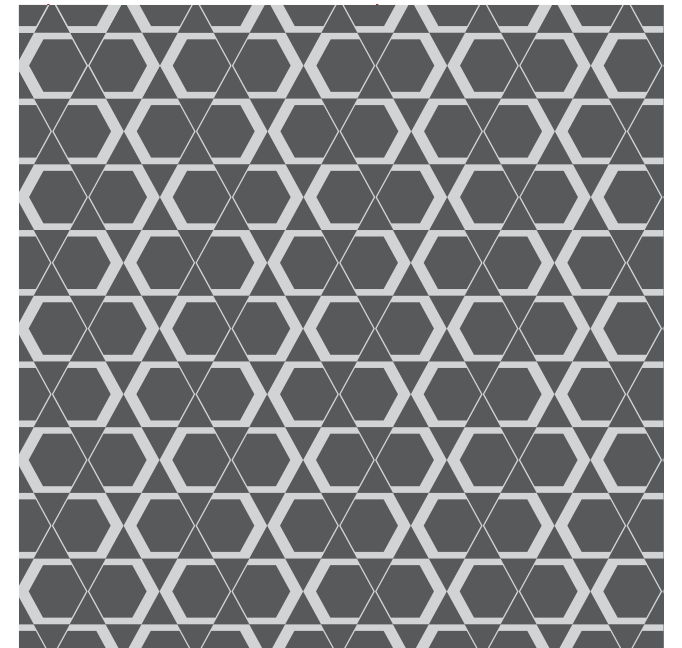
300x400



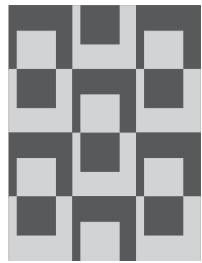
250x250



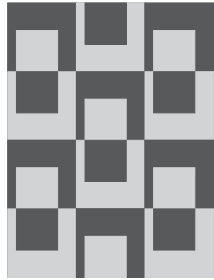
300x300



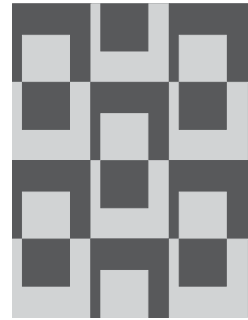
400x400



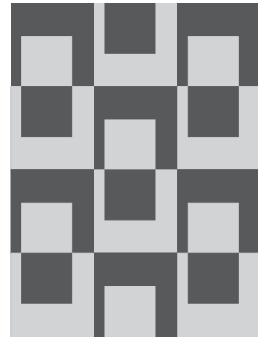
195x260



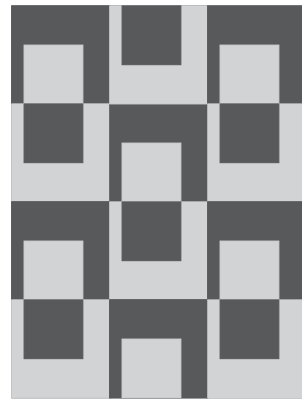
210x280



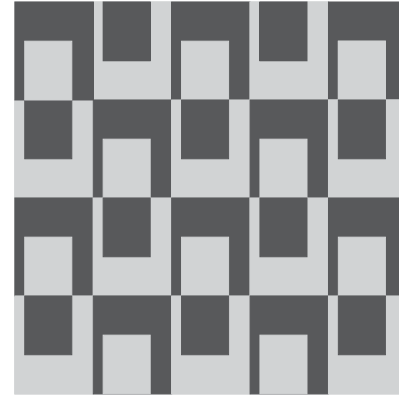
240x320



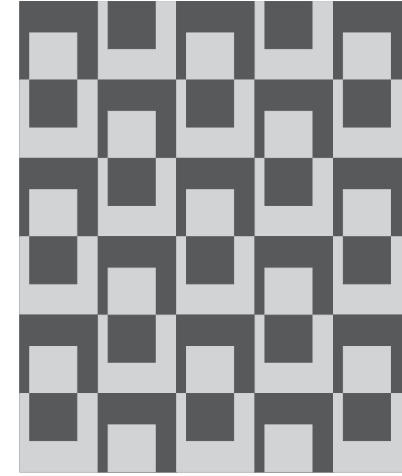
255x340



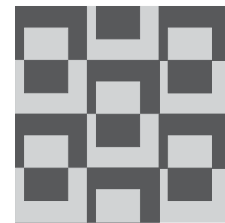
300x400



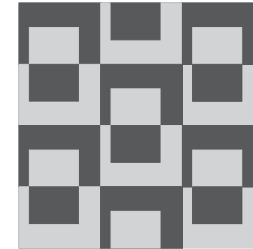
400x400



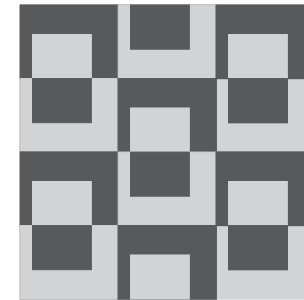
400x480



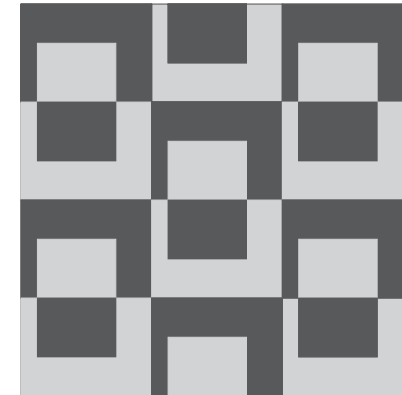
220x220



250x250



300x300



400x400