

## /PELLO WEAVE

possible standard color combinations



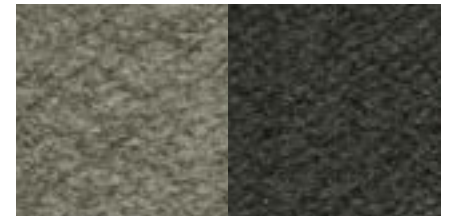
211

409



410

500



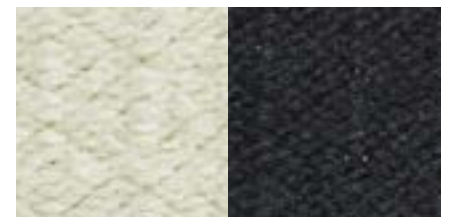
402

404



100

282



100

500



100

401

## DESCRIPTION OF THE QUALITY

**Composition pile:** 85% Peruvian alpaca wool and 15% sheep wool.

**Composition warp:** 100% polyester

**Pile structure:** flat weave.

**Total thickness (approx.):** 6 mm.

**Structure back:** reversible carpet.

**Production method:** Hand weaving.

**Child labour:** The production of Casalis-carpet is carried out without the use of child labour.

## POSSIBILITIES COLLECTION

**Designs:** The Pello weave-collection does contain standard designs, but other designs are possible on request.

**Sizes:** All carpets are made to measure, there are no standard sizes available. Maximum width is 500cm. Length is not limited.

**Possible shapes:** only rectangular.

**Deviations to size and shape:** Because Casalis carpets are made by hand, slight deviations in shape and size can occur. These imperfections are part and parcel of a carpet made by hand and consequently cannot be valid grounds for complaints.

**Colours:** The colours are a selection of the natural colours of the alpaca. The wool is applied undyed. Only the grey hues are dyed completely or partially because these colours are hard to find in alpaca wool.

**Non standard colours:** Not possible.

**Colour differences:** Slight colour differences between yarn batches are characteristic of dying natural materials and consequently cannot be valid grounds for complaints.

## RANGE OF USES

**General:** Normal use

Underneath dining table and chairs

With a sofa combination

In the bedroom

Public places (e.g. hotel lobby)

**Wet rooms (bathroom etc):** Not possible because of danger of rotting of the natural fibres.

**On stairs:** Not possible.

**Desk chairs on wheels:** Possible.

## SPECIFIC USER INSTRUCTIONS

**Receipt of new carpet:** Upon receipt of the new carpet, immediately remove it from the plastic wrapping in order to avoid the formation of moisture and mould.

**Carpet protectors:** Carpet protectors can be used, but are not necessary.

**Underlay:** the use of an underlay to keep the carpet in place is strongly advised.

**Deviations in size:** Casalis carpets are hand made. Shape and size can differ slightly. Don't have your carpet lined up with any straight seams in the floor, but have the carpet cover them, so that any irregularities are not noticed.

**Discolouring of the subfloor:** The back of the carpet has no influence on the floor underneath.

**Use as wall-to-wall carpet:** This quality cannot be used as a wall-to-wall carpet.

**Fluffing:** The carpet will lose some fibres in the first months. After a while, the fluffing will reduce. Fluffing will last on average between 6 to 24 months, depending on user intensity (walking on, vacuum cleaning).

**Ageing of the carpet:** All objects are subject to ageing, as are carpets. Turning the carpet at regular intervals ensures even ageing.

## SPECIFIC MAINTENANCE INSTRUCTIONS

**Vacuum cleaning:** Use the vacuum cleaner regularly to remove loose fibres.

Ok

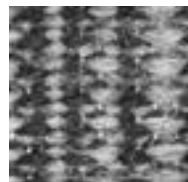
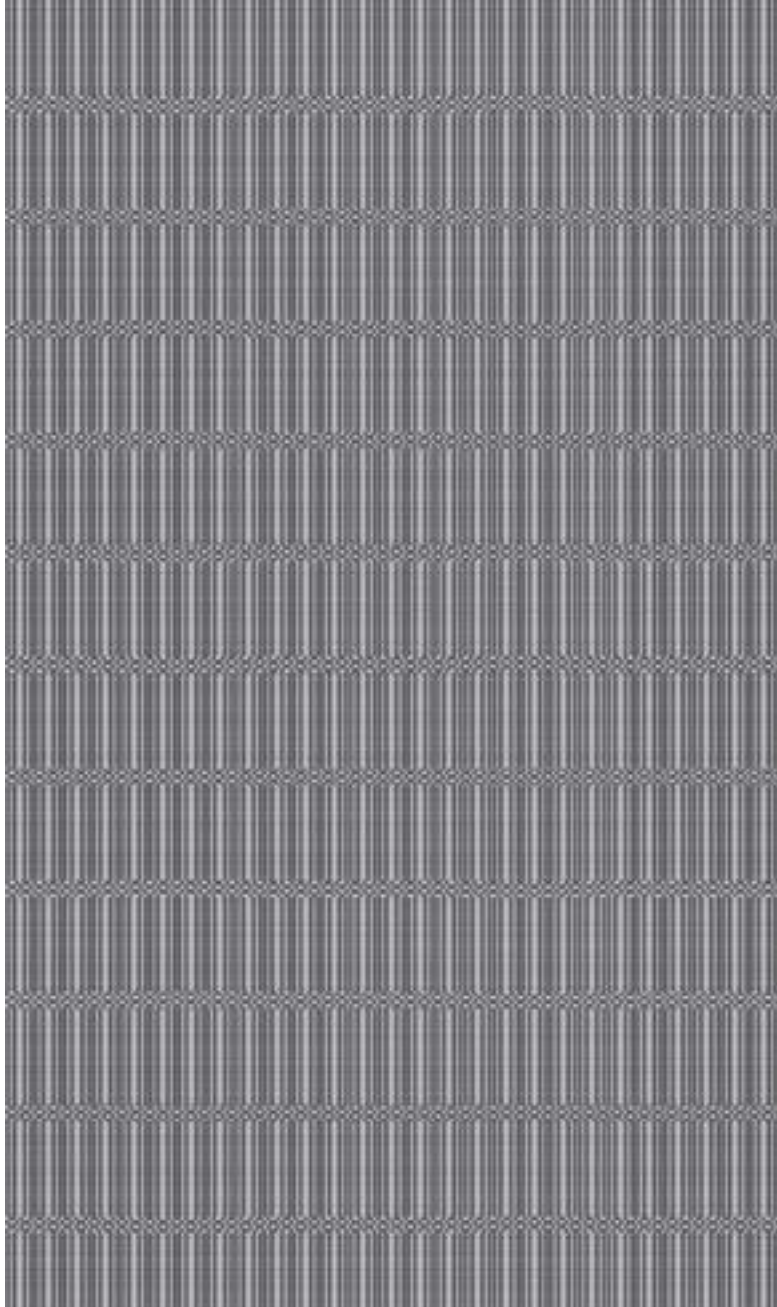
Ok

Ok

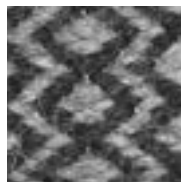
Ok

# /PELLO WEAVE

triangle & zigzag

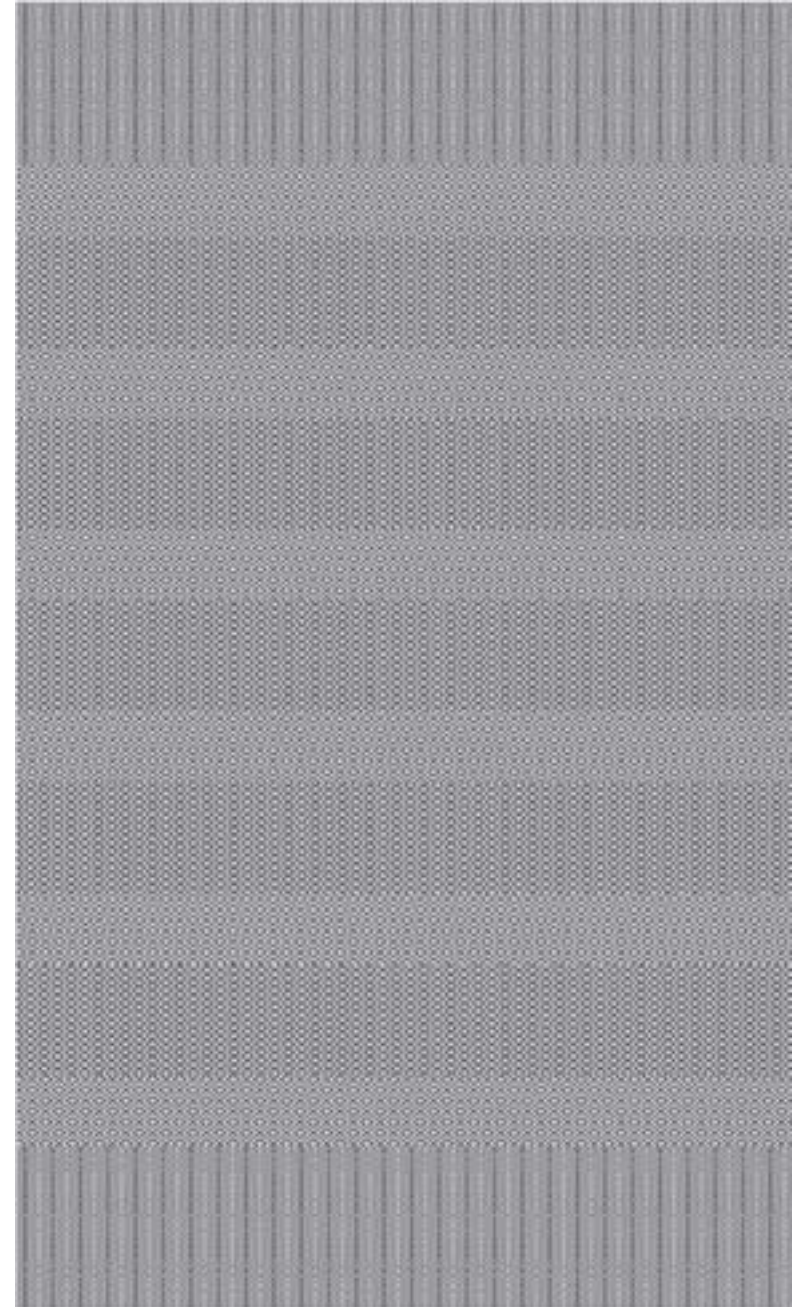


triangle

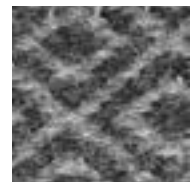


zigzag

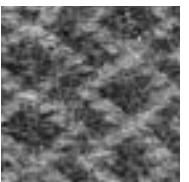
fishbone & square & zigzag



fishbone - border



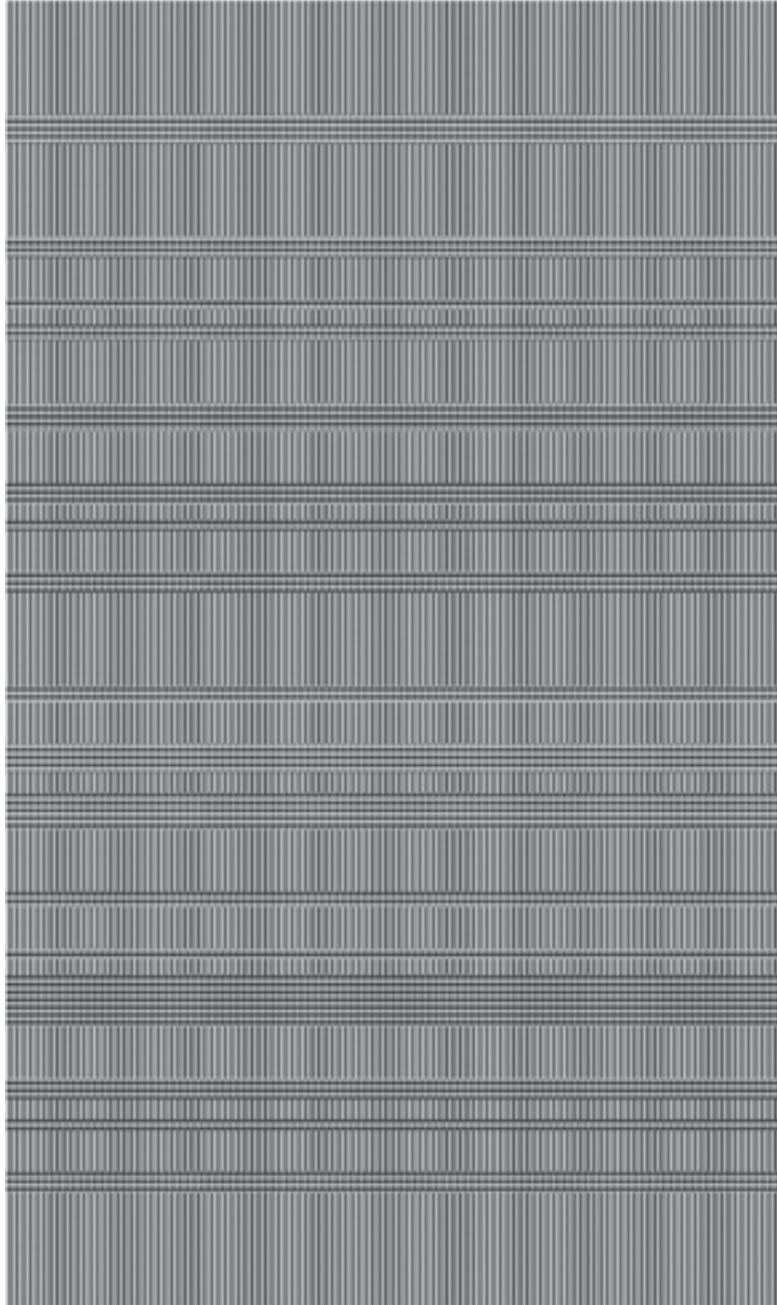
square



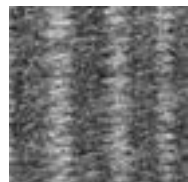
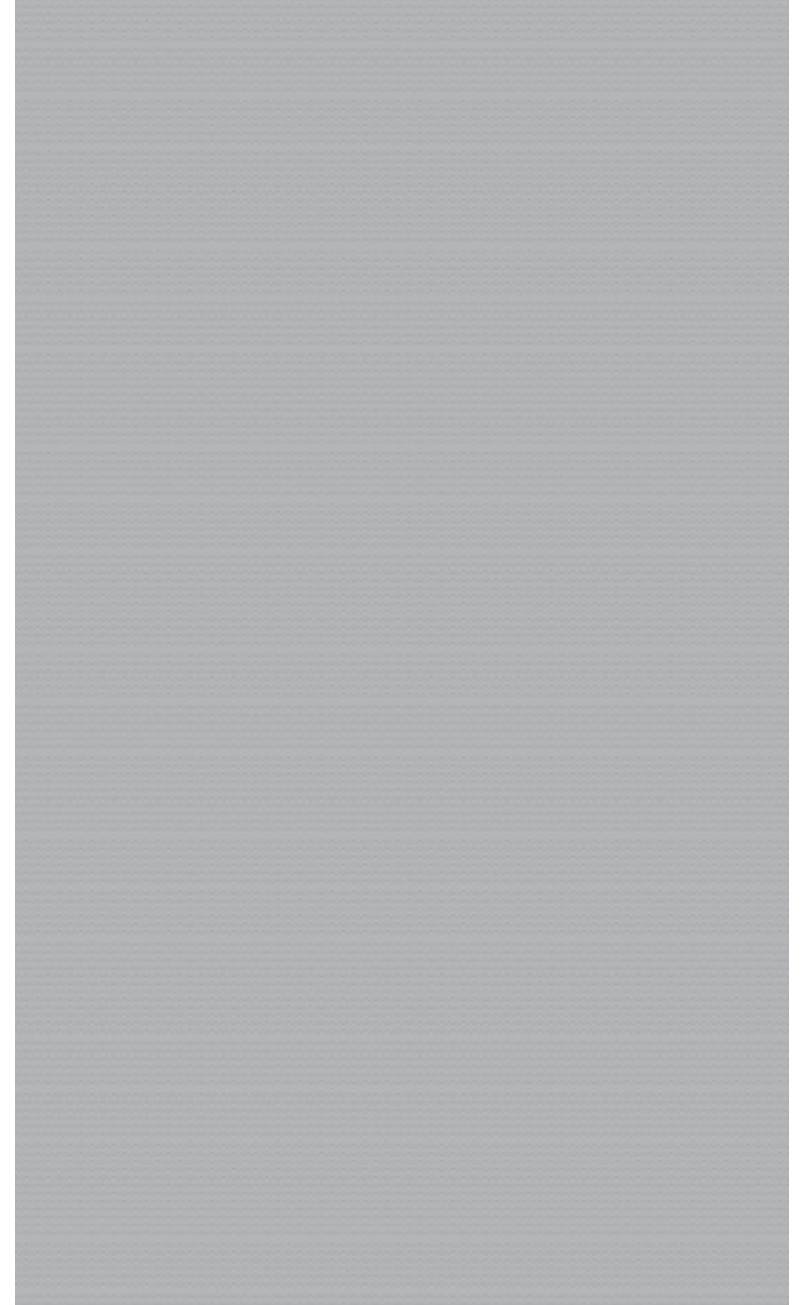
zigzag

# /PELLO WEAVE

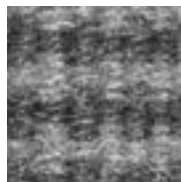
line & cross



uni



line



cross

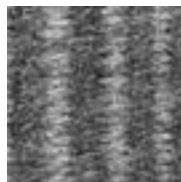
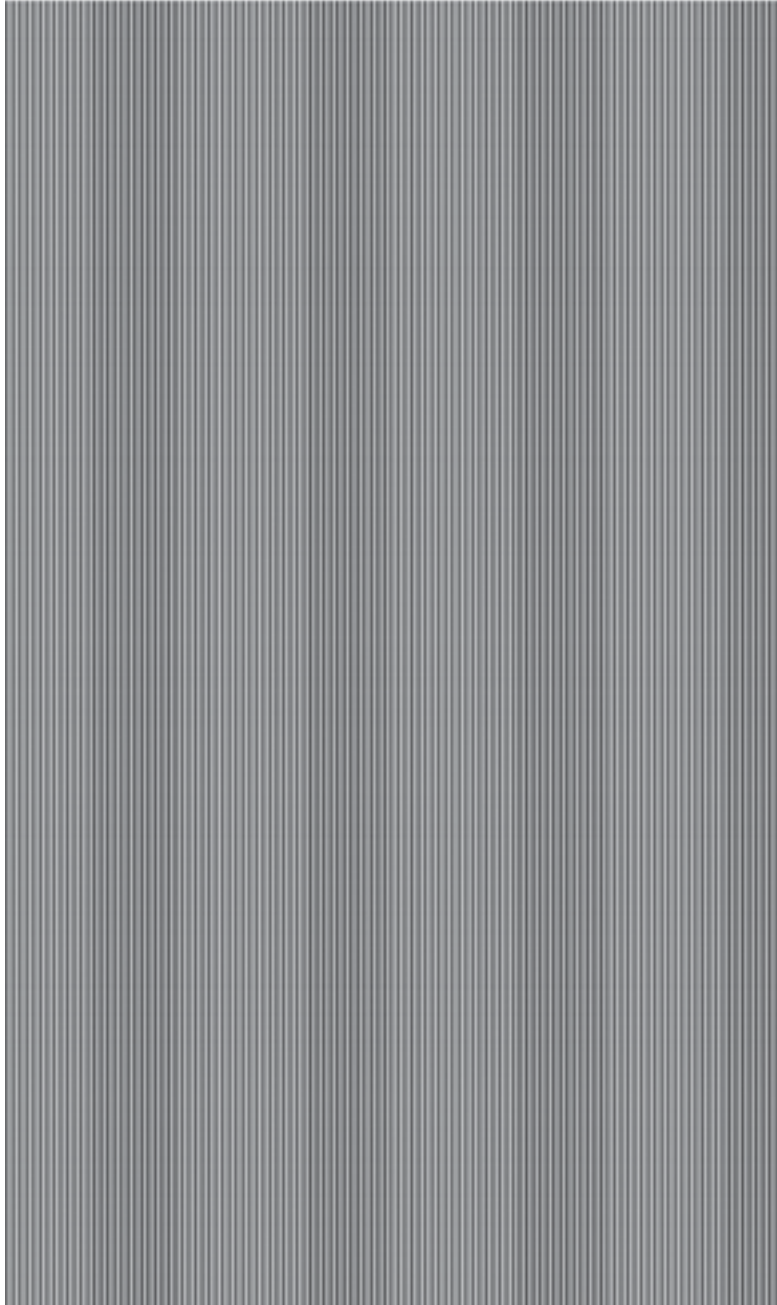


uni

CARPETS

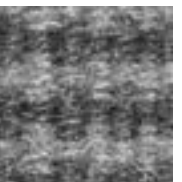
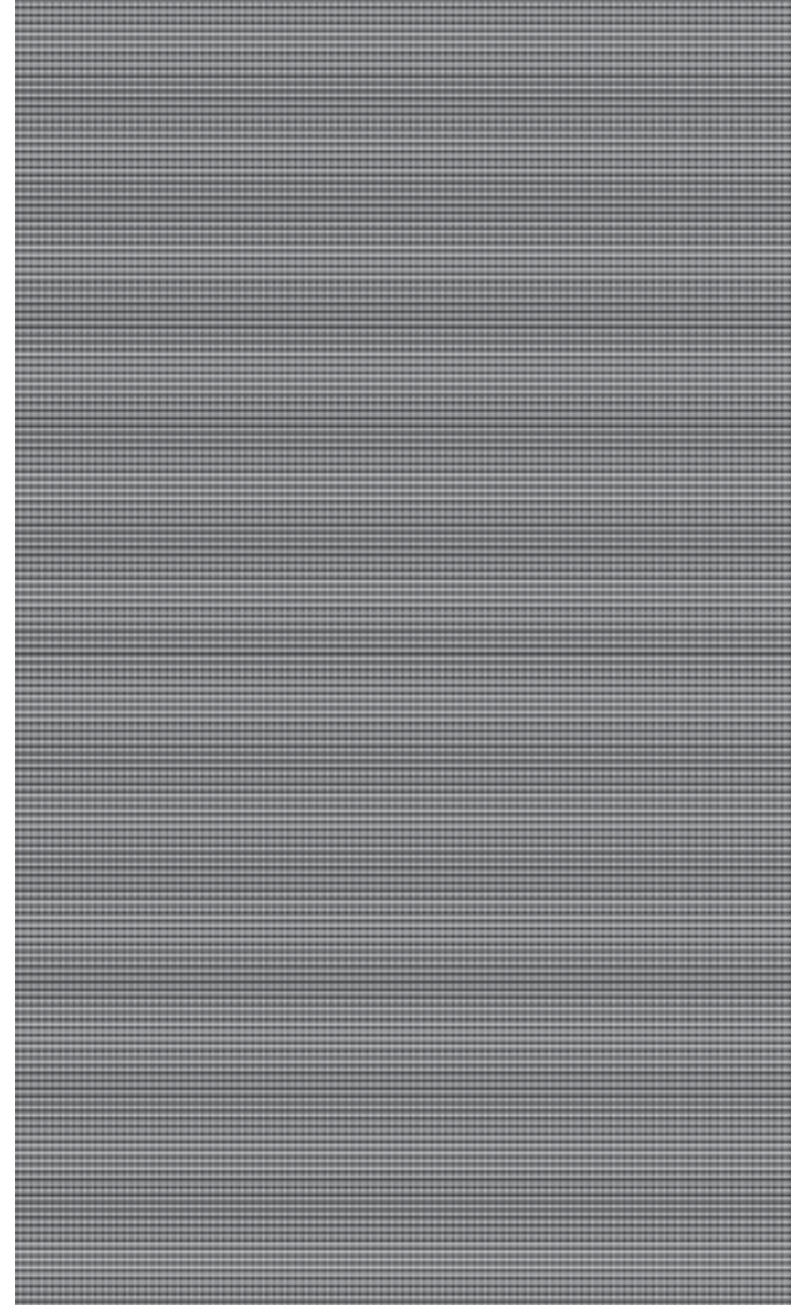
# /PELLO WEAVE

line



line

cross

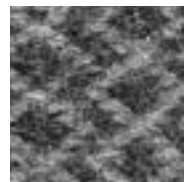
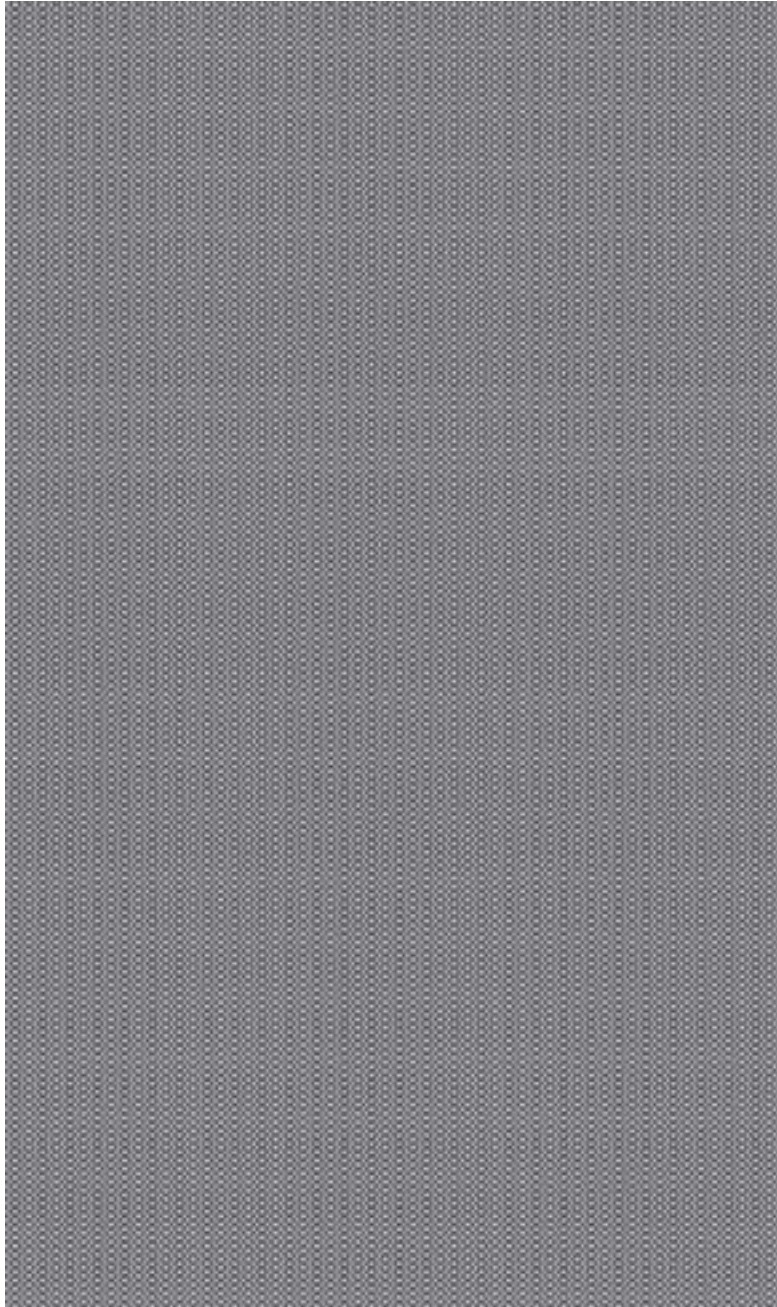


cross

CARPETS

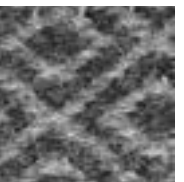
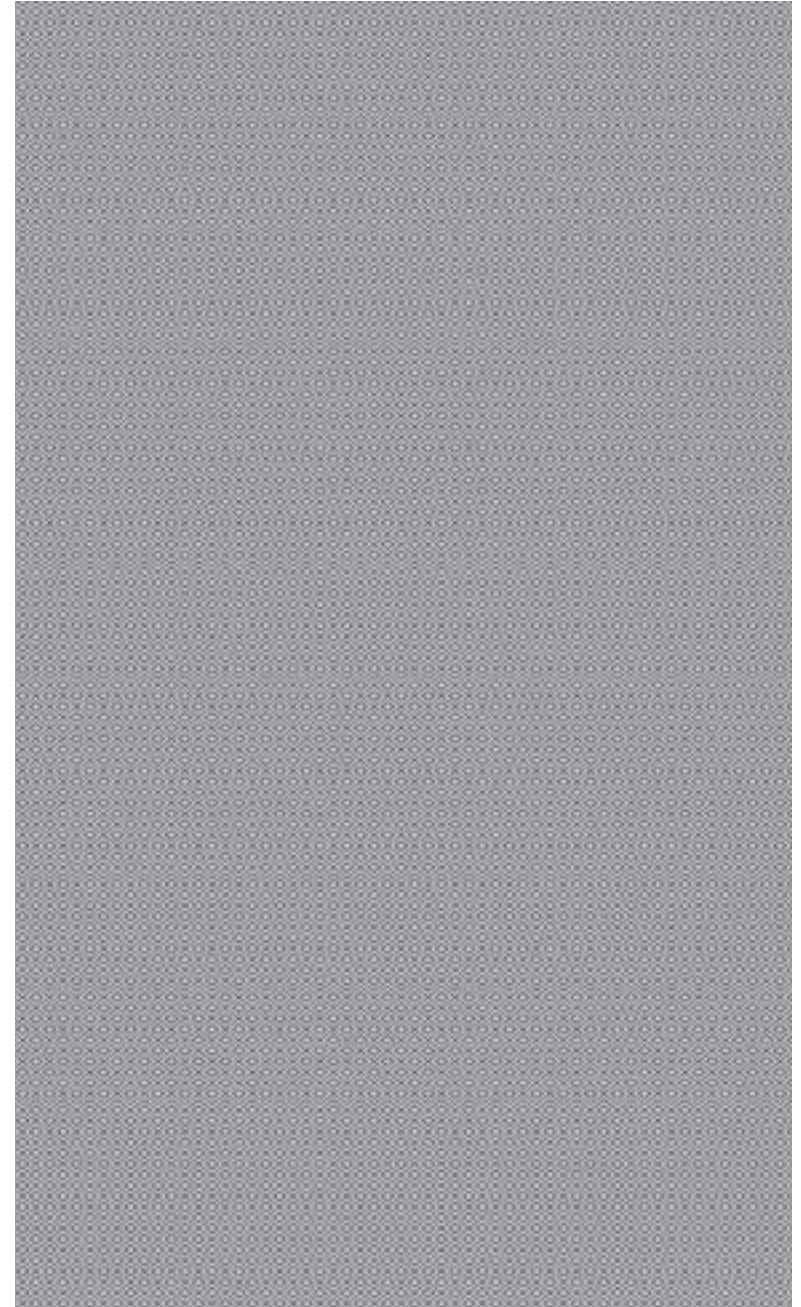
# /PELLO WEAVE

zigzag



zigzag

square

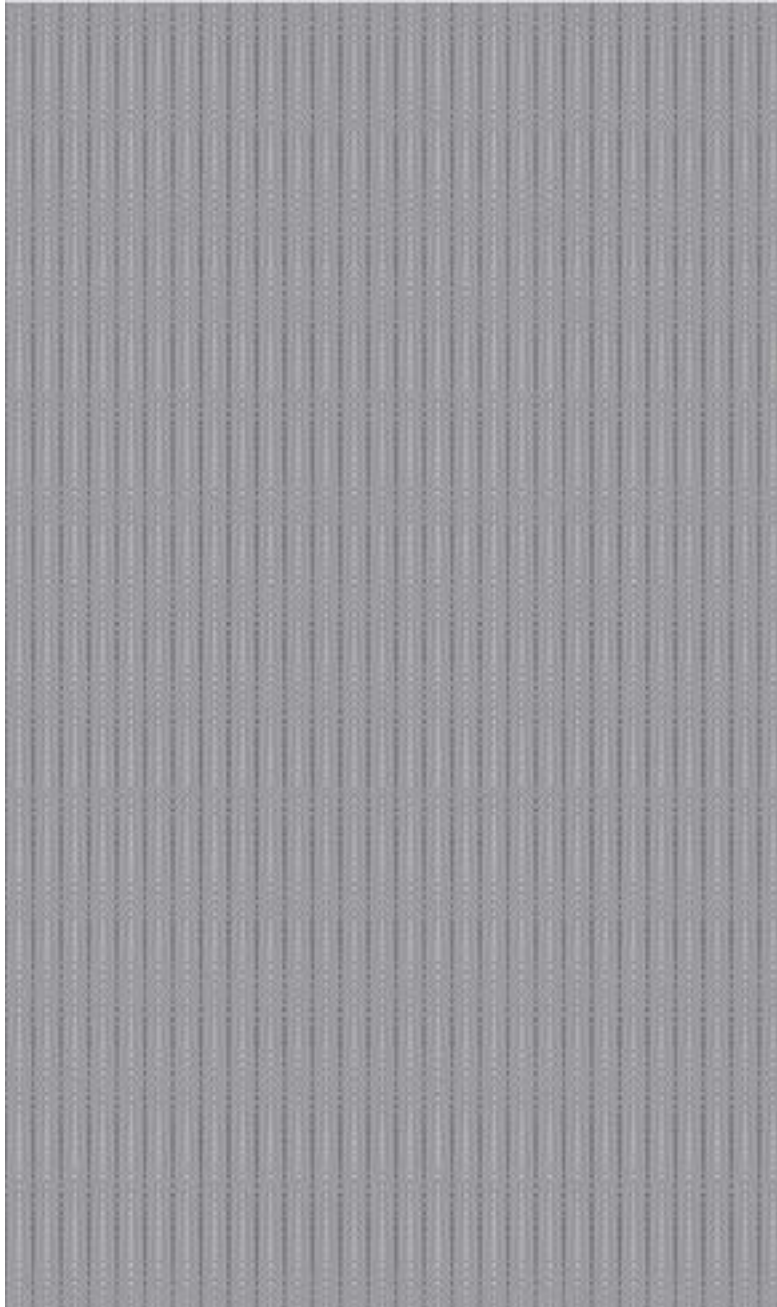


square

CARPETS

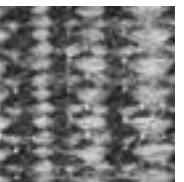
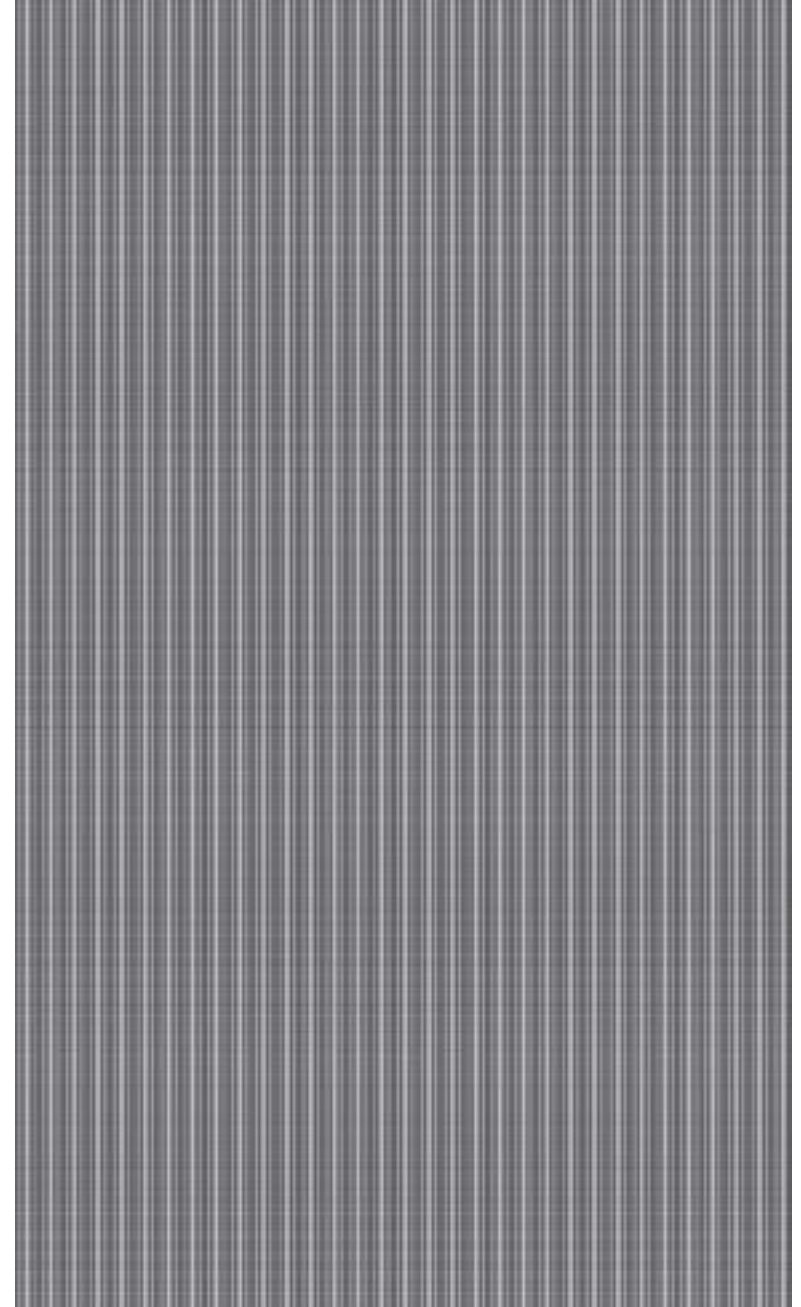
# /PELLO WEAVE

fishbone



fishbone

triangle

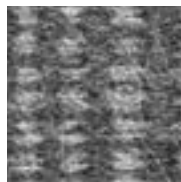
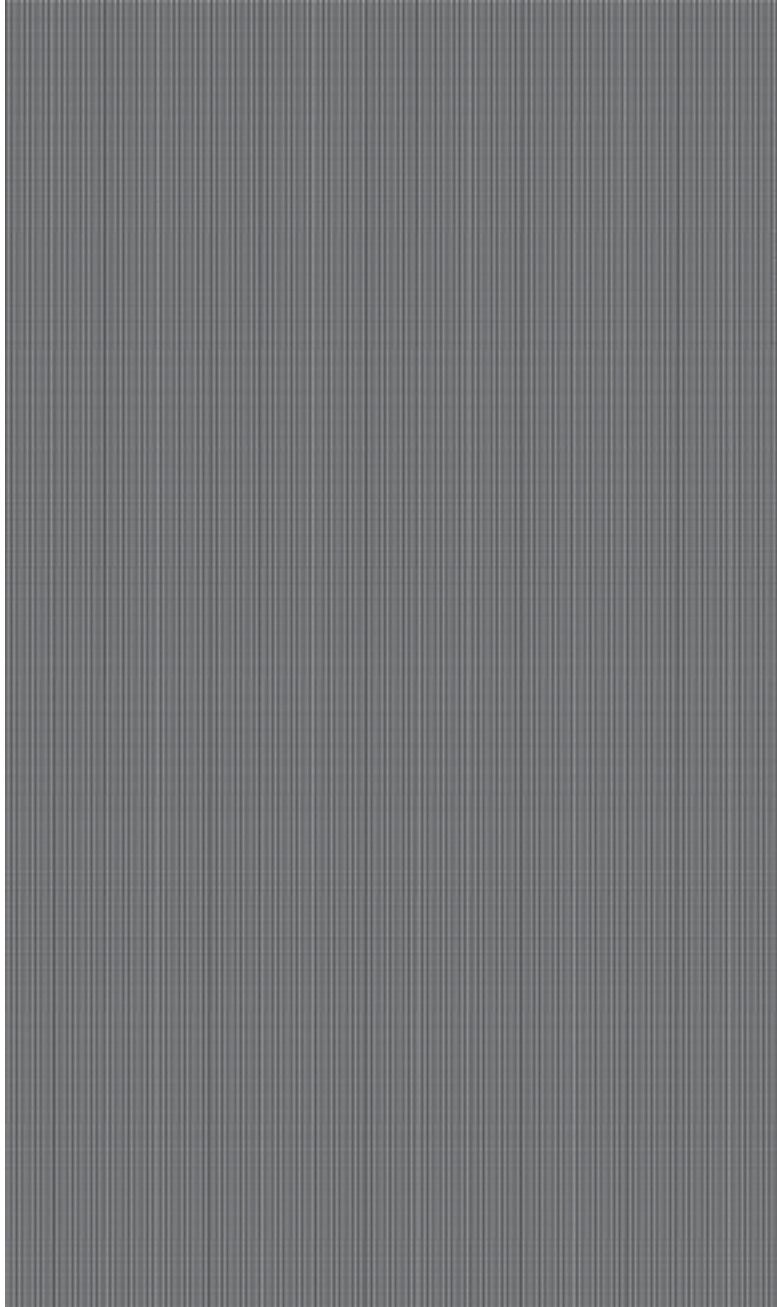


triangle

CARPETS

# /PELLO WEAVE

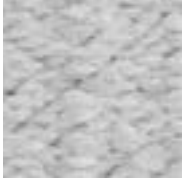
dot



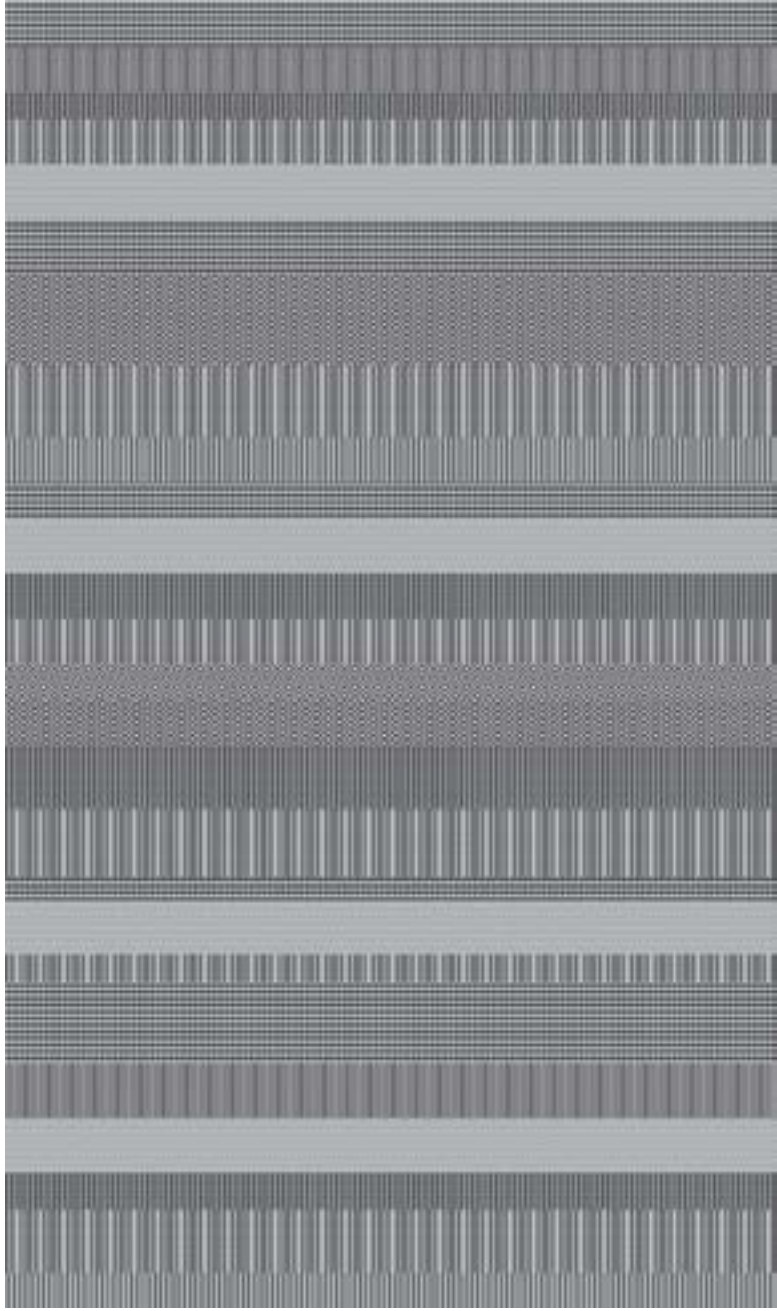
dot

# /PELLO WEAVE

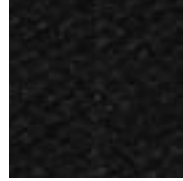
multi white



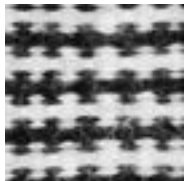
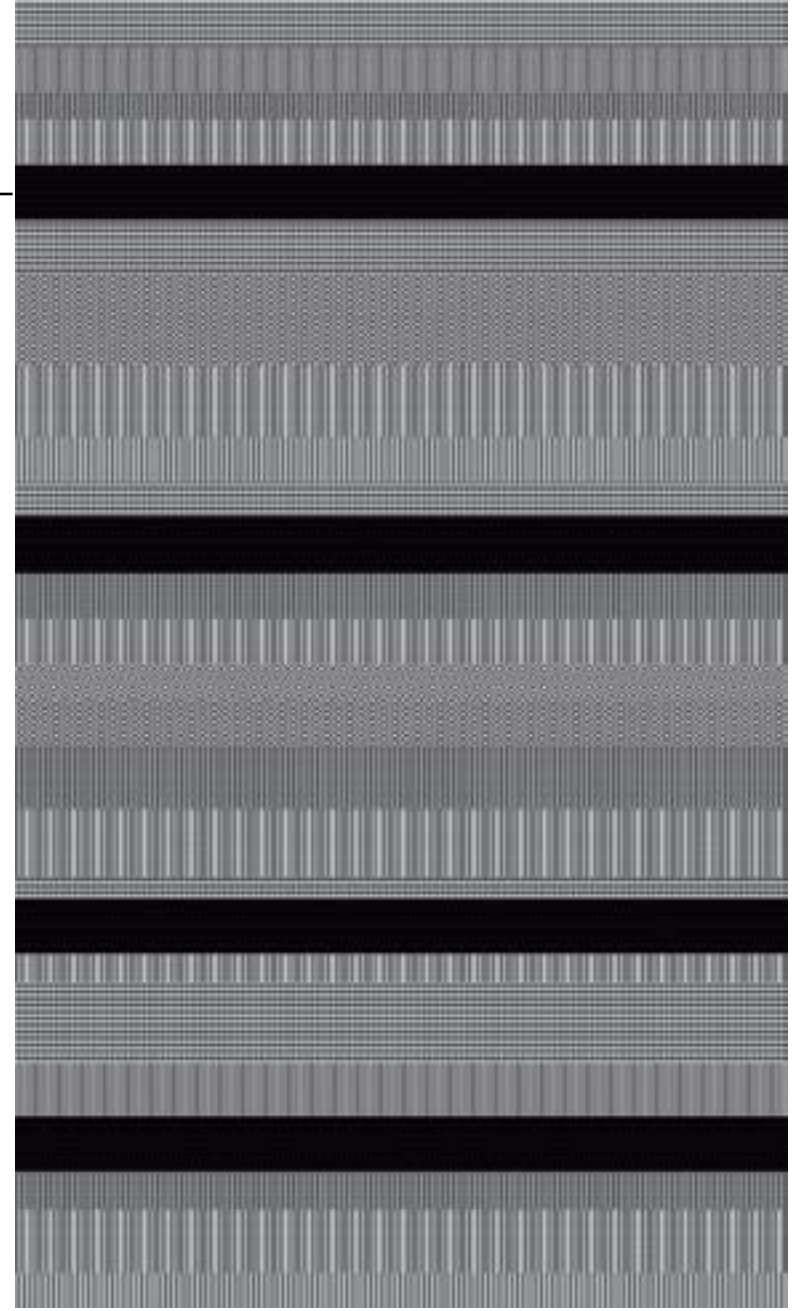
100



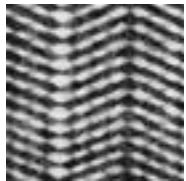
multi black



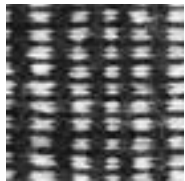
500



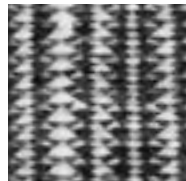
cross



fishbone



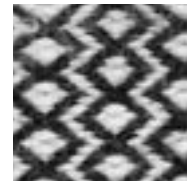
dot



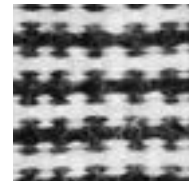
triangle



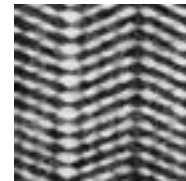
square



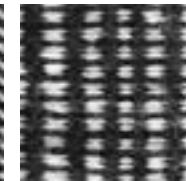
zigzag



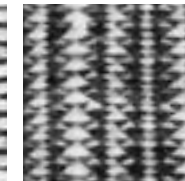
cross



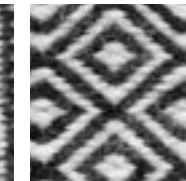
fishbone



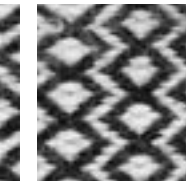
dot



triangle



square



zigzag