

FOGG™

Design GUNILLA LAGERHEM ULLBERG
HAND TUFTED RUG IN *pure linen*



KASTHALL



PRODUCT SPECIFICATIONS

An elegant long pile rug that shimmers in a variety of shades. The character of the linen yarn and the many shades of colour gives it a beautifully mottled appearance and attractive sheen.

Product type: Hand tufted rug in pure linen

Pile material: 100% linen

Base fabric: Polyester

Backing material: Polypropylene and recycled yarn

Adhesive: Acrylic polymer

Size and shape: Any size and shape available. Or choose amongst our suggested sizes: 140x200 cm, 170x240 cm, 200x300 cm, 250x350 cm. Round: Ø 240 cm.

Number of threads per stitch: 6

Pile height: approx. 40 mm

Pile weight: approx. 3200 g/m²

Total height: approx. 44 mm

Total weight: approx. 4100 g/m²



Burning classification:
(EN 13501-1) Cfl-s1
Cfl-s1 with flame retardant

LEED: Fogg has LEED certification – CRI Green label Plus

CARE ADVICE HAND TUFTED RUGS

To further extend the lifetime of your rug, Kasthall recommends a regular maintenance so that the rug may retain its shape and appearance. If you have a light, single-colour rug you will need to care for it more often than a darker, patterned rug. Thorough vacuum cleaning is the best, most economical and environmentally friendly cleaning method. Beating or shaking a rug may damage the fibers. Note that it is quite normal for the rug to lose individual fibers when used, these are excess fibres and it does not affect the general quality of the rug. If you want to get rid of excess fibres faster, you can vacuum the rug daily for an initial period. It is most efficient to vacuum the rug one direction at a time. Please note that our hand tufted rugs made in linen are sensitive to water. There is a risk that the yarn becomes untwisted and slightly stiff when the rug dries, so be careful with the amount of water/liquid used when removing stains.

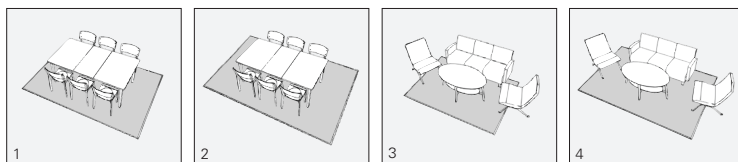
CLEANING ADVICE

Kasthall recommends professional cleaning of all our rugs. All rugs should be washed flat using water (not machine washed or dry-cleaned) and then dried flat. It is very important to provide good ventilation during the drying process. Shrinkage of around 3-5% may be expected. For our hand tufted long-pile rugs made in 100% linen, see separate care advise. At www.kasthall.com you can read more about our materials, how to look after your rug and our stain guide.

CHOOSING A RUG

Choose the characteristics of the rug, its colour and design to suit the space in which it will be laid. If it is to be laid in a hall, for example, you may choose a type of rug that is more resistant to wear, and a colour that is a little darker and dirt-tolerant. Use a rug as a means of bringing together the rest of the interior. Decide whether you want to place a sofa on the rug or at its edge. If a rug is to be placed underneath a dining table, add at least 60 cm all round the table to allow space for pulling out the chairs.

Hand tufted rugs are suitable for creating cosy environments with warm acoustics. Depending on the quality, hand tufted rugs can work equally well in domestic settings and public spaces. Ideal for use in living rooms, bedrooms and in lounge environments and hotel rooms.



Examples of commonly used rug sizes:

1. Dining table with 6 chairs: rug size 200 x 300 cm
2. Dining table with 6 chairs: rug size 250 x 350 cm
3. Three-seat sofa with armchairs: rug size 170 x 240 cm
4. Three-seat sofa with armchairs: rug size 200 x 300 cm

OTHER INFORMATION

- Depending on the materials used and the rug-making process, dimensions may vary by up to $\pm 2\%$ so please state maximum or minimum dimensions when placing your order.
- Note that all rugs from Kasthall are made from natural materials. Variations in colour and texture can therefore arise between batches of yarn and dye baths.

ENVIRONMENT AND SOCIAL RESPONSIBILITY

At Kasthall environmental work is a very natural part of what we do and what we stand for – today and for generations to come. Naturally we are certified according to the environmental standard ISO14001, and many of our products bear the symbols of LEED, BASTA etc. These certificates confirm our continuous efforts. All our rugs are made to order in Sweden, using the finest renewable natural materials. Our working environment reflects the creativity and quality that we strive for – in design, materials and manufacture. Read more about our environmental work and philosophy at kasthall.com



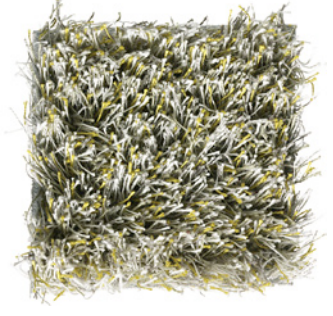
White 5



Light Beige 880



Soft Grey 850



Grey Yellow 10



Grey 2



Steel Grey 550



Dark Grey 1



Zink Grey 520



Thunder Black 530



Chocolate Brown 770



Turquoise 320



THE BEST FROM NATURE – LINEN FROM NORMANDY

Linen is a natural fibre, and Kasthall only uses European linen of the highest quality. Our suppliers are members of the Masters of Linen, which means that we buy linen from Normandy that is harvested naturally and with respect for the environment. Among other things this means that the flax is left in the field to ret – the process by which the linen fibres are extracted from the plant – so that the sun and rain are allowed to do the job instead of using chemicals, which also requires five times as much water.

This is better for the soil in which the linen grows, and for the environment as a whole. Linen thus has less impact on the environment than cotton and synthetic fibres, for example. The linen yarn that Kasthall uses has long fibres, and its high sheen gives it exceptional brilliance and lustre when it is dyed. Regardless of whether the linen is used alone or blended with wool, it gives an impression of elegance and quality. Linen is also anti-static and non-allergenic.



Rug: Harlequin Cream
Fogg Harlequin is available in the following sizes: 170x240 & 200x300 cm



Rug: Harlequin Cognac
Fogg Harlequin is available in the following sizes: 170x240 & 200x300 cm



All Kasthall rugs are made to order, for each and every client. Kasthall Atelier offers the possibility to create a completely custom-made rug, in any colour, pattern and shape imaginable. To celebrate this unique feature, our chief designer Gunilla Lagerhem Ullberg has created Fogg Harlequin, to show the possibilities offered by our hand tufted linen rug Fogg.

Fogg Harlequin is based on Fogg and comes in shades of suede and leather, inspired by the afghan coats and leather patchwork of the 1970's. The rug, designed by Gunilla Lagerhem Ullberg is available in two colour combinations – Cognac and Cream – and expresses a passion for natural materials and long pile rugs.

Showrooms in MILAN • NEW YORK • STOCKHOLM • GOTHENBURG

KASTHALL HQ SWEDEN

Phone +46 320 20 59 00, Fax +46 320 20 59 01
Fritslavägen 42, Box 254, SE-511 23 Kinna, Sweden
info@kasthall.se

For the latest updates of our collection, please visit www.kasthall.com

All the designs shown here are protected under law. Kasthall have the property rights and distribution rights worldwide. Copying will be prosecuted.



KASTHALL