

DESCRIPTION OF THE QUALITY

Composition pile: 70 % wool and 30 % silk.

Pile structure: Cut pile.

	Caro basso	Caro medio	Caro alto
Total thickness in mm (approx):	15	21	28
Pile height above ground fabric in mm (approx):	12	18	25

Structure back: Latexed cloth.

Back: Waterproof latex.

Production method: Hand tufted.

Child labour: The production of Casalis-carpets is carried out without the use of child labour.

Finish: Folded bordersglued tuft cloth and covered with Casalis tape on the underside.

POSSIBILITIES COLLECTION

Designs: The Caro-collection does not contain standard designs, but designs are possible using different colour areas, cuts or a combination of both. Because Caro is shorn in one uniform area, we advise against the use of areas with different pile heights.

Sizes: All carpets are made to measure, there are no standard sizes available. All sizes are possible as long as the width does not exceed 490 cm. Larger sizes available on request

Possible shapes: Round, oval, polygonal etc.

Deviations to size and shape: Because Casalis carpets are made by hand, slight deviations in shape and size can occur. These imperfections are part and parcel of a carpet made by hand and consequently cannot be valid grounds for complaints.

Non standard colours:

- Based on our colour reference boxes.
- Based on a reference sample (e.g. piece of fabric).
- Samples only possible as colour sample.

Colour differences: Slight colour differences between yarn batches are characteristic of dying natural materials and consequently cannot be valid grounds for complaints.

RANGE OF USES

General:

Caro basso and medio: Heavy use allowed. Caro alto: normal use.

General	Caro basso and medio:	Caro alto
	Heavy use	Normal use
Underneath dining table and chairs	Ok	Ok
With a sofa combination	Ok	Ok
In the bedroom	Ok	Ok
Public places: (e.g. hotel lobby)	Ok	Not Ok

Wet rooms (bathrooms etc): Not possible because of danger of rotting of the natural fibres.

On stairs: Possible.

Desk chairs with wheels: Not possible.

SPECIFIC USER INSTRUCTIONS

Receipt of new carpet: Upon receipt of the new carpet, immediately remove it from the plastic wrapping in order to avoid the formation of moisture and mould.

Carpet protectors: Carpet protectors are not necessary but we do recommend using them in order to avoid permanent impressions of e.g. table or chair legs.

Underlay: If there are no heavy objects on the carpet, an underlay will prevent the carpet from moving.

Deviations in size: Casalis carpets are hand made. Shape and size can differ slightly. Don't have your carpet lined up with any straight seams in the floor, but have the carpet cover them, so that any irregularities are not noticed.

Discolouring of the subfloor: The back is not aggressive at all towards the floor it rests on.

Use as wall-to-wall carpet:The Caro-quality can also be used as a wall-to-wall carpet. In that case, the carpet will be made in the shape of the surface of the floor with a little extra on the sides allowing it to be cut to size once in situ. To avoid fraying, the cut edges need to be glued down. A simple solution is to latex the entire carpet.

Next, the carpet is glued to the floor or stretched between the walls. Stretching has the advantage that the carpet can be taken out again in a simple way. Ask a professional interior decorator which method is best suited to the room in question.

Fluffing: In the beginning, all carpets of spun pile will lose fibres. This is inherent to spun yarn and should reduce in time. Fluffing will last on average between 6 to 24 months, depending on user intensity (walking on, vacuum cleaning).

Ageing: All objects are subject to ageing, as are carpets. Turning the carpet at regular intervals ensures even ageing.

SPECIFIC MAINTENANCE INSTRUCTIONS

Vacuum cleaning: A new Caro-carpet will lose fibres.

This is typical of the wool used. Use the vacuum cleaner regularly to remove loose fibres.

How will the carpet age?

Changes in aspect of textile floor covering by means of the Hexapod tumbler test - ISO 10361 (2000).

General	Caro basso	Caro medio	Caro alto
Weight loss after 12000 revolutions in %	0,72	0,84	0,8
Aspect changes after 12000 revolutions	3	3	2
Colour changes after 12000 revolutions	>=2	>=2	>=2
User class	Heavy	Heavy	Normal

Conclusion: The loss of pile after 12000 revolutions amounts to less than 1 % for all qualities. This means fluffing will certainly not cause any visible deterioration of the carpet. The user class is 'heavy' for Caro basso and medio. The carpet is suitable for the busiest places in the home and application in public places. For Caro alto the user class is 'normal'.

Can sunlight fade the carpet?

Lightfastness test - ISO 105 B02 (1994/Amd 1998 and 2000).

Test results:

Lightfastness average colour 6-7
Lightfastness pastel colours 6

Conclusion: Caro is lightfast. Nevertheless, it is better not to expose carpets to direct sunlight.

What if a spark of fire hits the carpet?

Flammability of textile floor covering - US Commercial Standard: "Surface Flammability of Carpets and Rugs, Doc. FF 1-70°".

Test results: For Caro, the maximum distance between the centre of the burning pill and the damaged area is 9.1 mm. Consequently, the flame will only spread with ± 4 mm.

Conclusion: The flame won't spread far and is no danger to other flammable interior objects. However, a spark will leave an ugly burn mark on the carpet. Always be careful with fire and screen your carpet from the open fire.

How visible are the imprints of e.g. chair or table legs?

Static tension - ISO 3416 (1975).

Test results:

- After 24 hrs, Caro basso has an impression depth of 1.28 mm or 10.67 %.
- After 24 hrs, Caro medio has an impression depth of 0.6 mm or 3.3 %.
- After 24 hrs, Caro alto has an impression depth of 3.33 mm or 13.3 %.

Conclusion: Due to the high concentration of wool, Caro has excellent resilience. But because of the smooth surface, irregularities do show up. That is why we recommend the use of carpet protectors.

Can the carpet be combined with underfloor heating?

Thermal conductivity with the Tecosy-device: 1 plate method.

Test results: Thermal conductivity with the Tecosy-device is 0.13; 0.15; 0.15 for Caro basso, medio and alto respectively.

Conclusion: The Caro collection gets average scores in this test. In normal cases it should not be a problem to combine a Caro-carpet with underfloor heating. If Caro is used as wall-to-wall carpet or as a rug with a surface larger than 60 % of the total surface of the floor, additional heating may be necessary. Ask your architect or installer for advice, because several aspects can influence the efficiency of underfloor heating.

If the carpet is used in combination with underfloor heating it is advisable to moisten it with a plant spray at regular intervals to avoid dehydration. The carpet will look fresher and will be less fluffy.



BEIGE-E



BEIGE-F



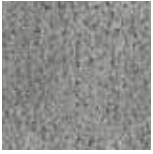
5M



6M



7M



10G



2G



3G



1M



2M



3M