

DESCRIPTION OF THE QUALITY

Composition pile: 80 % New-Zealand wool, 20 % European wool.

Pile structure: Cut pile.

Total thickness (approx.): 25 mm.

Pile height above ground fabric (approx.): 18 mm.

Structure back: Hand-knotted.

Material back: Wool and jute.

Material weft: Jute.

Material warp: Jute.

Production method: Hand-knotted.

Child labour: The production of Casalis-carpets is carried out without the use of child labour.

Finish borders: Longer sides edged with wool. Short sides have a folded Kelim border edged with wool. Also available with fringes.

POSSIBILITIES COLLECTION

Designs: The collection contains standard designs, but other designs are also possible using different colour areas.

Sizes: All carpets are made to measure. Maximum width is 470 cm. Length is unlimited. For larger widths, two carpets can be connected to each other without this being visible on the pile side.

Possible shapes: Round, oval, polygonal etc. Sometimes the back is covered with a layer of latex in order to improve the stability of the carpet.

Deviations to size and shape: Because Casalis carpets are made by hand, slight deviations in shape and size can occur. These imperfections are part and parcel of a carpet made by hand and consequently cannot be valid grounds for complaints.

Non standard colours:

- Based on our colour reference boxes.
- Based on a reference sample (e.g. piece of fabric).
- Size of the samples available: 18 x 38 cm. colour sample.

For certain colour samples, yarn with a different texture will be used. The sample gives you a good idea, but the final colour can be slightly different.

Colour differences: Slight colour differences between yarn batches are characteristic of dying natural materials and consequently cannot be valid grounds for complaints.

RANGE OF USES

General: Heavy use allowed.

Underneath dining table and chairs	Ok
With a sofa combination	Ok
In the bedroom	Ok
Public places (e.g. hotel lobby)	Ok

Wet rooms (bathrooms etc): Not possible because of danger of rotting of the natural fibres.

On stairs: Possible.

Desk chairs with wheels: Not possible.

SPECIFIC USER INSTRUCTIONS

Receipt of new carpet: Upon receipt of the new carpet, immediately remove it from the plastic wrapping in order to avoid the formation of moisture and mould.

Use underlay: If there are no heavy objects on the carpet, an underlay will prevent the carpet from moving.

Deviations in size: Casalis carpets are hand made. Shape and size can differ slightly. Don't have your carpet lined up with any straight seams in the floor, but have the carpet cover them, so that any irregularities are not noticed.

Discolouring of the subfloor: The back of the carpet has no influence on the floor underneath.

Use as wall-to-wall carpet: This Beiras-quality can also be used as a wall-to-wall carpet. In that case, the carpet will be made in the shape of the surface of the floor with a little extra on the sides allowing it to be cut to size once in situ. To avoid fraying, the cut edges need to be glued down. A simple solution is to latex the entire carpet.

Next, the carpet is glued to the floor or stretched between the walls. Stretching has the advantage that the carpet can be taken out again in a simple way. Ask a professional interior decorator which method is best suited to the room in question.

Fluffing: In the beginning, all carpets of spun pile will lose fibres. This is inherent to spun yarn and should reduce in time. Fluffing will last on average between 6 to 24 months, depending on user intensity (walking on, vacuum cleaning).

Ageing: All objects are subject to ageing, as are carpets. Turning the carpet at regular intervals ensures even ageing.

SPECIFIC MAINTENANCE INSTRUCTIONS

Removing of stains: Limit the use of moisture to an absolute minimum. If moisture is used, dry the carpet with a hair drier (at a safe distance) as soon as possible, or by dabbing (not wiping) it with a dry cloth. The back consists mainly of jute which could rot if left wet for too long. Please note: wiping instead of dabbing may damage the structure of the wool.

How will the carpet age?

Aspect changes of textile floor covering by means of the Hexapod tumbler test - ISO 10361 (2000).

Test results:	
Weight loss after 12000 revolutions in %	0,55
Aspect changes after 12000 revolutions	3
Colour changes after 12000 revolutions	≥2
User class	Heavy

Conclusion: The loss of pile after 12000 revolutions amounts to 0.55 %. This means that fluffing is limited to a minimum. The user class is 'heavy'. The carpet is suitable for the busiest places in the home and application in public places.

Can sunlight fade the carpet?

Lightfastness test - ISO 105 B02 (1994/Amd 1998 and 2000).

Test results:	
Lightfastness average colour	4-5
Lightfastness pastel colours	-

Conclusion: Beiras is fairly lightfast. Nevertheless, it is better not to expose carpets to direct sunlight.

What if a spark of fire hits the carpet?

Flammability of textile floor covering- US Commercial Standard: "Surface Flammability of Carpets and Rugs, Doc. FF 1-70°".

Test results: For Beiras, the maximum distance between the centre of the burning pill and the damaged area is 8.9 mm. Consequently, the flame will only spread with ± 5 mm.

Conclusion: The flame won't spread far and is no danger to other surrounding objects. However, a spark will leave an ugly burn mark on the carpet. Always be careful with fire and screen your carpet from the open fire.

How visible are the imprints of e.g. chair or table legs?

Static tension - ISO 3416 (1975).

Test results: 24 hrs after the imprint, the pile is still imprinted 3.46 mm deeper than the rest of the carpet.

Conclusion: Imprints are limited. We do recommend the use of carpet protectors, because these will divide the tension over several points.

Can the carpet be combined with underfloor heating?

Thermal conductivity with the Tecosy-device: 1 plate method.

Test results: Thermal conductivity with the Tecosy-device amounts to 0.2054.

Conclusion: The Beiras collection scores quite high in this test. The carpet has an insulating effect on the underfloor heating, especially when used as wall-to-wall carpet or rug with a surface larger than 60 % of the total surface of the floor. The use of an additional means of heating may be necessary. Ask your architect or installer for advice.

If the carpet is used in combination with underfloor heating it is advisable to moisten it with a plant spray at regular intervals to avoid dehydration. The carpet will look fresher and will be less fluffy.

In spaces without underfloor heating the Beiras-quality offers extra floor insulation.



691



536



501



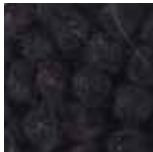
A5



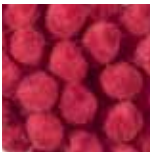
498



740



525



679



702



742



741



624



A713



615



479



527



488



566



B1



521



250X250
COLOUR 498



350X350
COLOUR 488



400X400
COLOUR 673



200X250
COLOUR 479



250X350
COLOUR 525



300X400
COLOUR 740



200X250
COLOUR B1



200X300
COLOUR 536



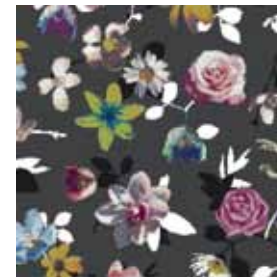
250X350
COLOUR A713



300X400
COLOUR 702



250X250
COLOUR 613



300X300
COLOUR 741



400X400
COLOUR 615



250X250
COLOUR 498-702



350X350
COLOUR 488-536



400X400
COLOUR 673-615



200X250
COLOUR 479-498



250X350
COLOUR 525-651



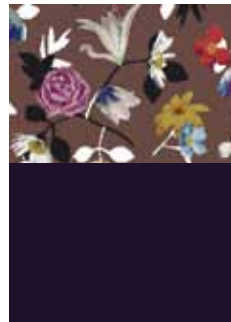
300X400
COLOUR 740-B1



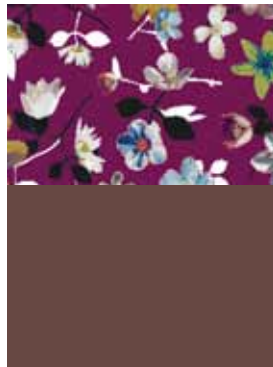
200X250
COLOUR B1-624



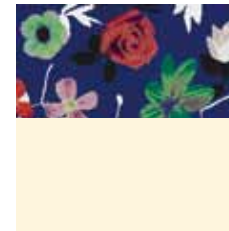
200X300
COLOUR 536-673



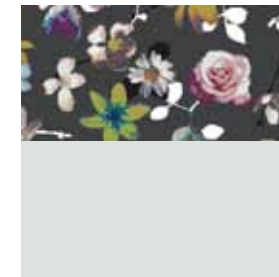
250X350
COLOUR A713-742



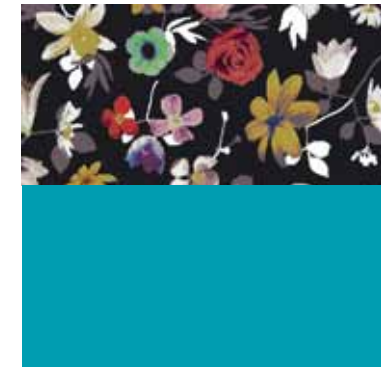
300X400
COLOUR 702-A713



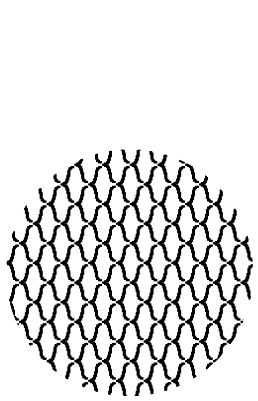
250X250
COLOUR 613-501



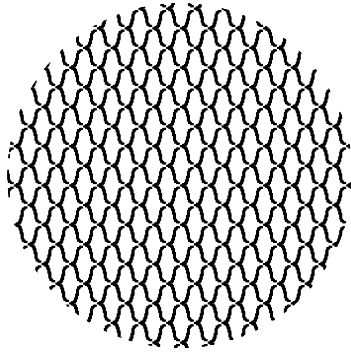
300X300
COLOUR 741-691



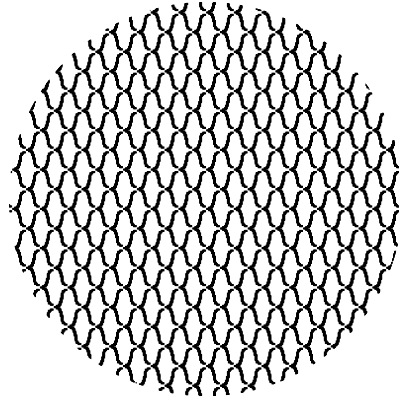
400X400
COLOUR 615-479



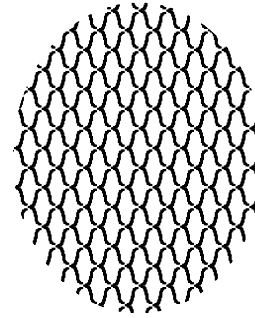
250x250 Kreis



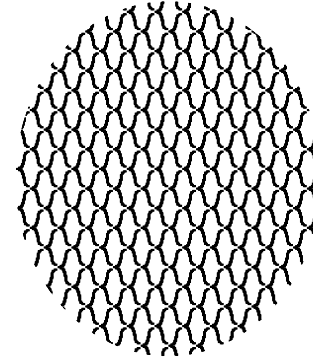
350x350 Kreis



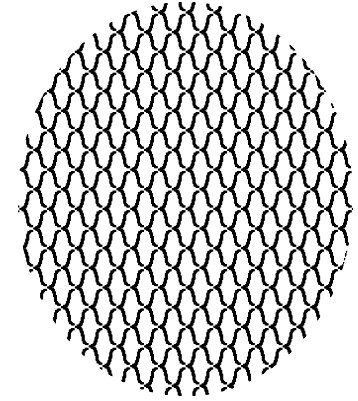
400x400 Kreis



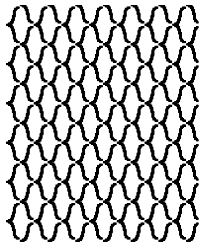
255x315 oval



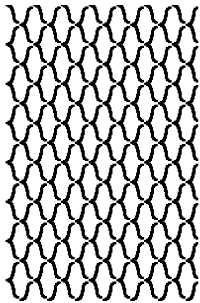
310x360 oval



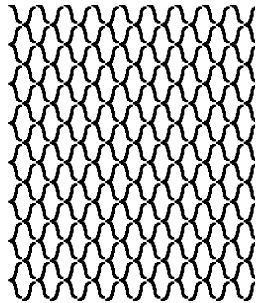
340x400 oval



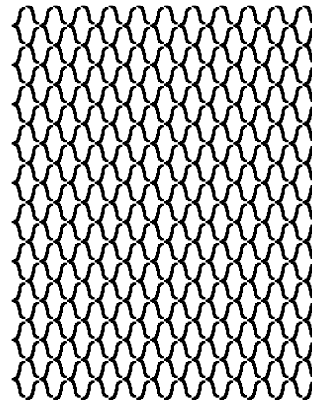
195x240



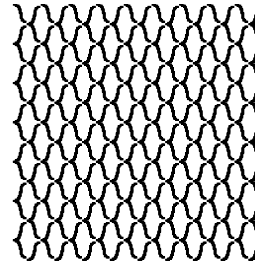
195x300



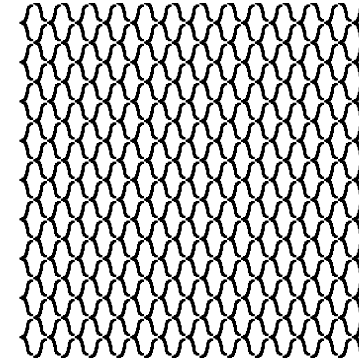
250x300



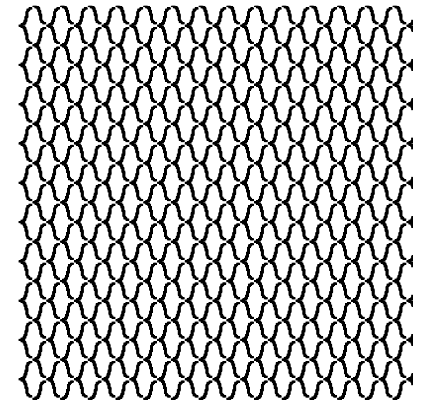
310x400



250x260



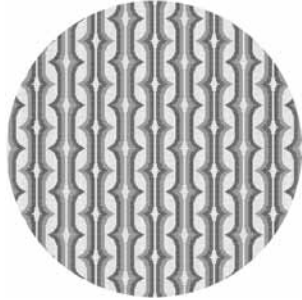
350x360



400x400



250x250 Kreis



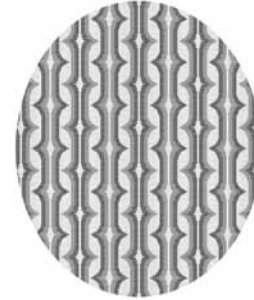
300x300 Kreis



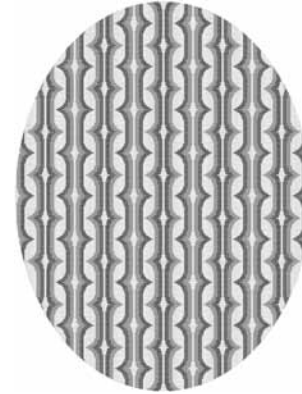
400x400 Kreis



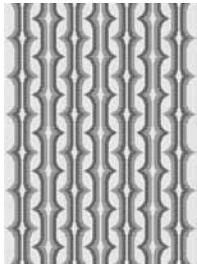
200x250 oval



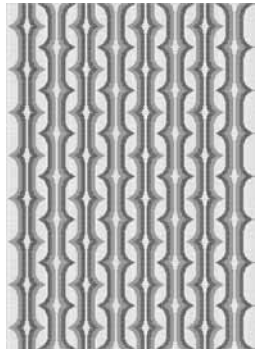
250x300 oval



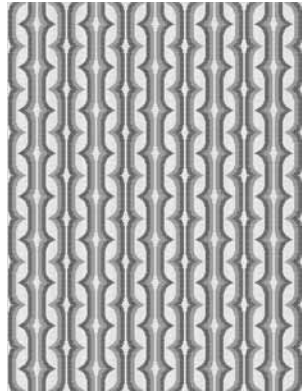
300x395 oval



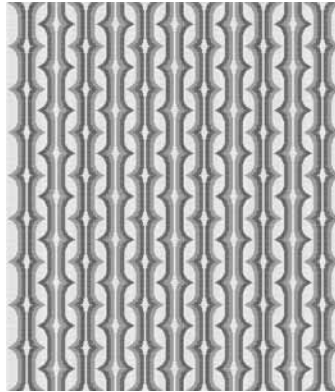
220x300



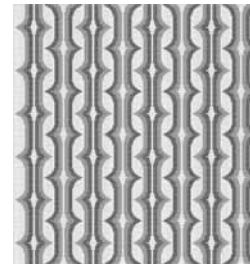
250x350



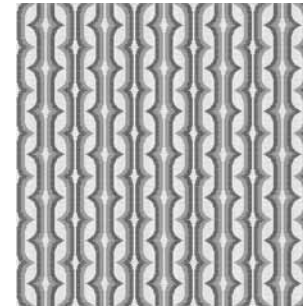
300x395



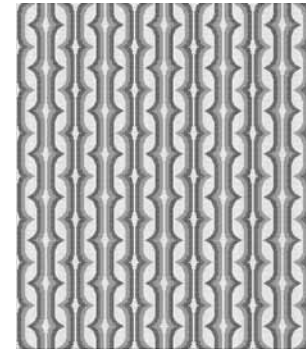
340x395



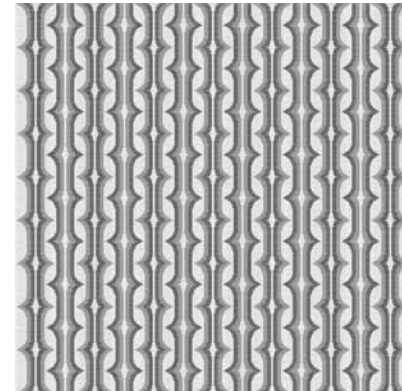
250x265



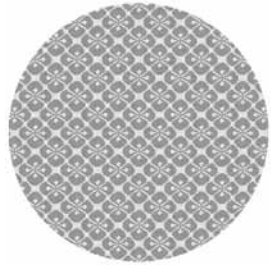
300x310



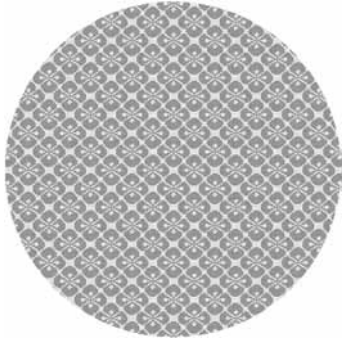
300x350



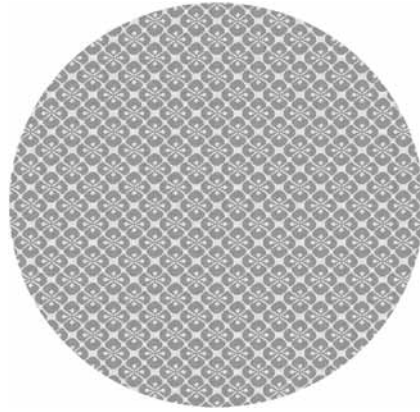
400x400



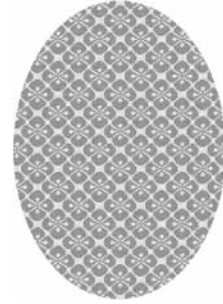
265x265 Kreis



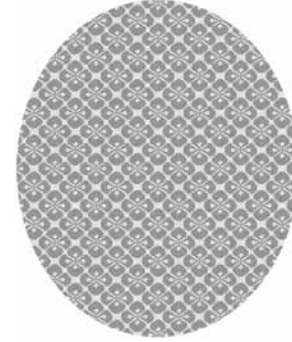
340x340 Kreis



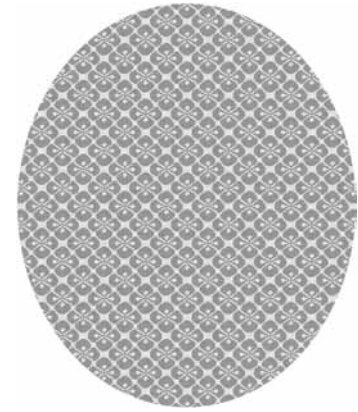
420x410 Kreis



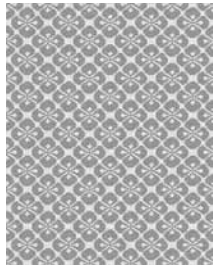
215x305 oval



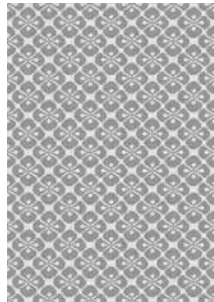
290x340 oval



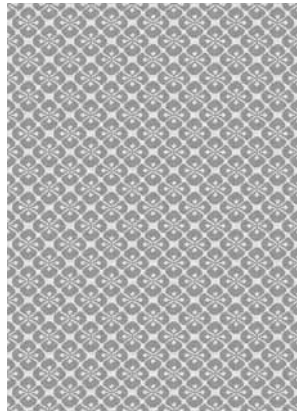
340x410 oval



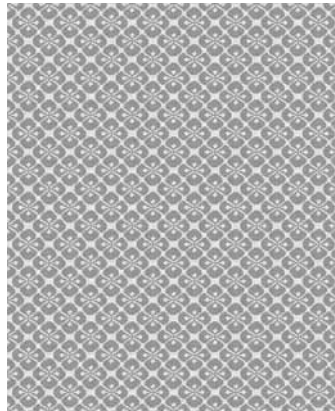
210x265



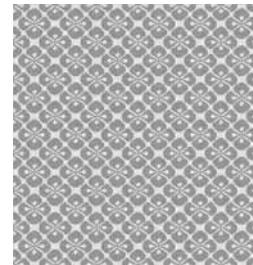
210x300



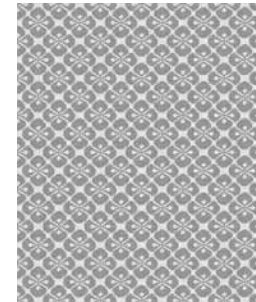
295x415



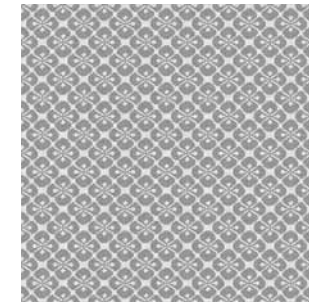
340x415



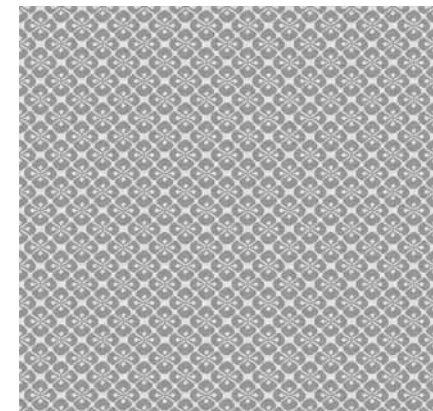
255x265



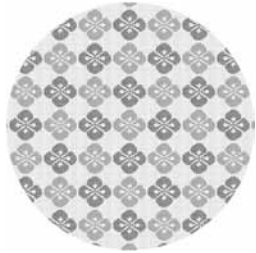
255x300



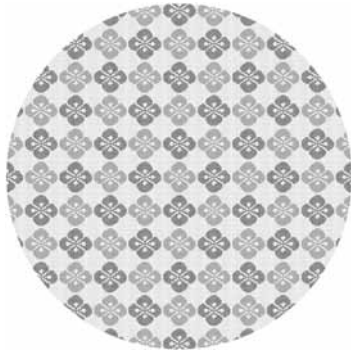
295x300



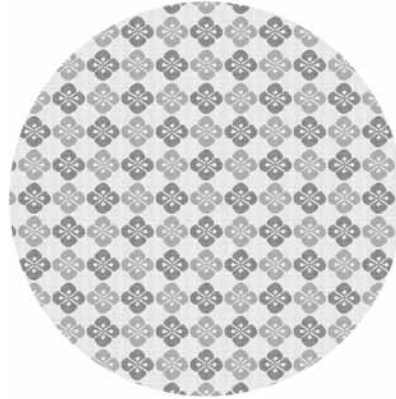
415x420



250x250 Kreis



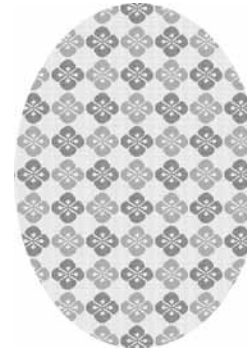
350x350 Kreis



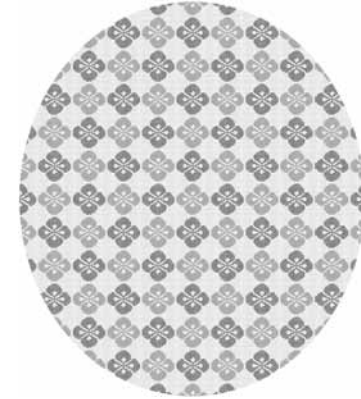
400x400 Kreis



200x250 oval



250x350 oval



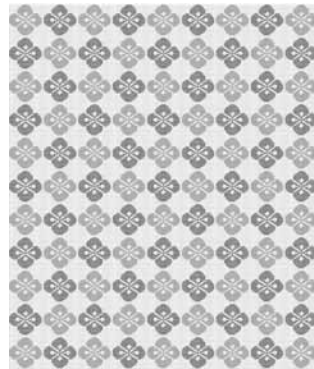
350x400 oval



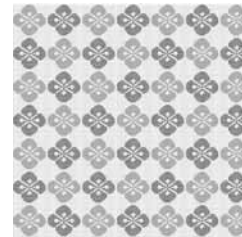
210x270



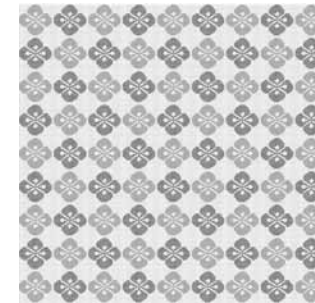
210x305



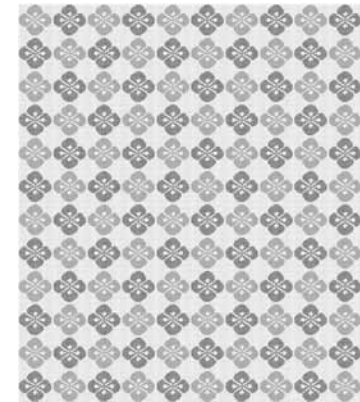
315x370



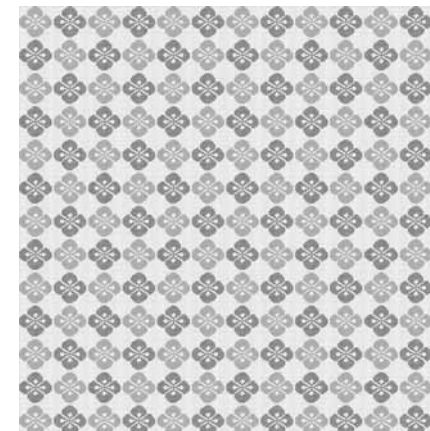
245x235



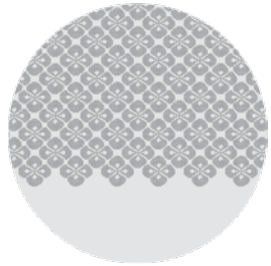
315x305



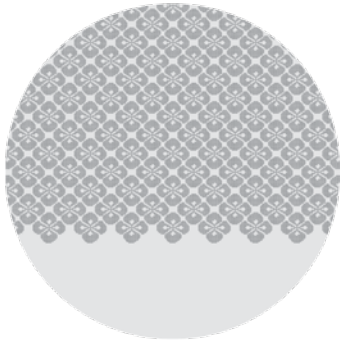
350x405



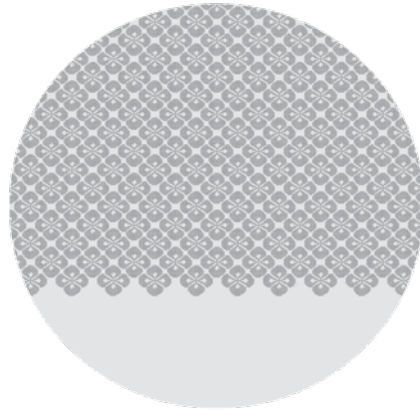
400x400



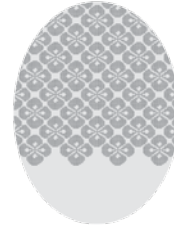
265x265 Kreis



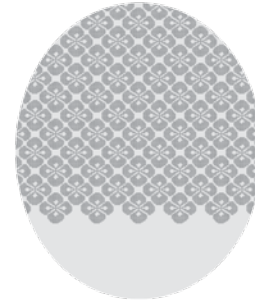
340x340 Kreis



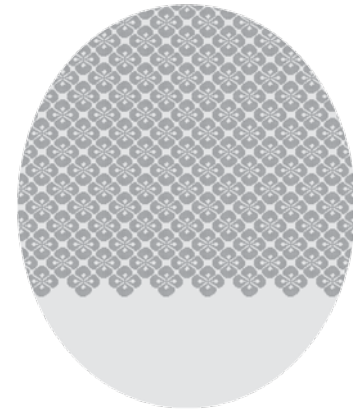
420x410 Kreis



170x225 oval



250x300 oval



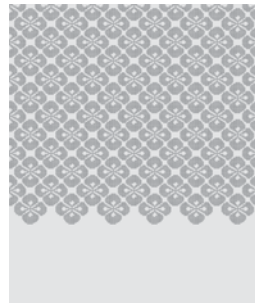
340x410 oval



210x265



210x300



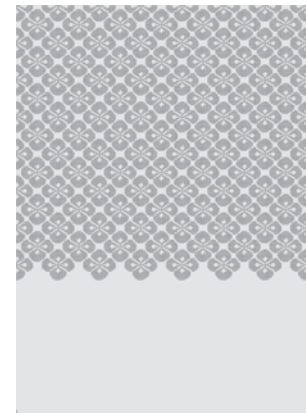
255x300



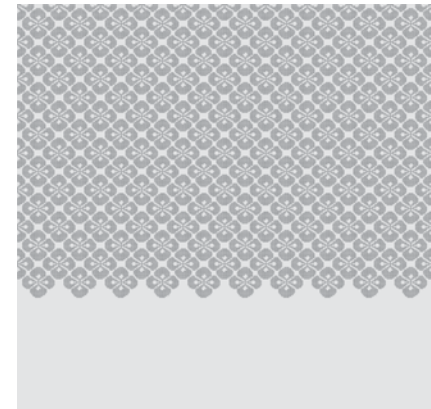
220x225



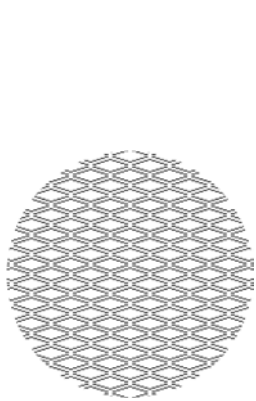
295x300



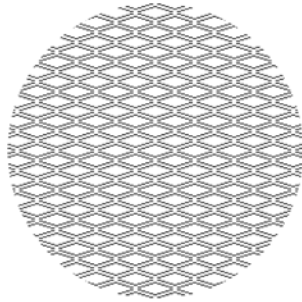
295x415



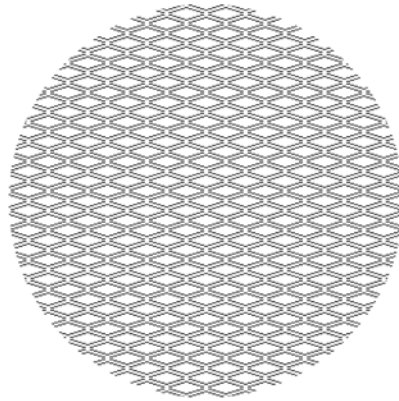
420x415



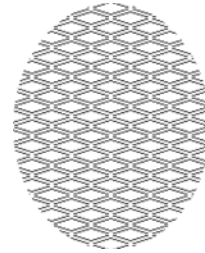
250x250 Kreis



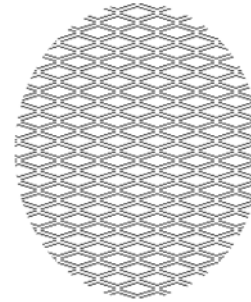
300x300 Kreis



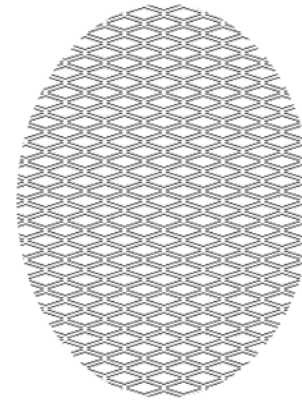
400x400 Kreis



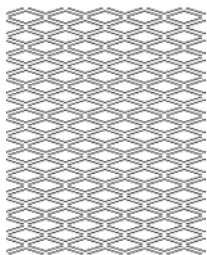
200x250 oval



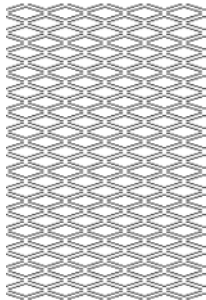
250x300 oval



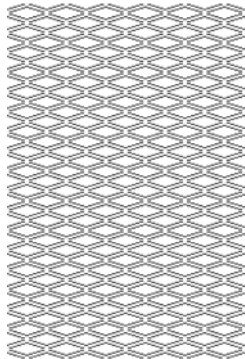
300x400 oval



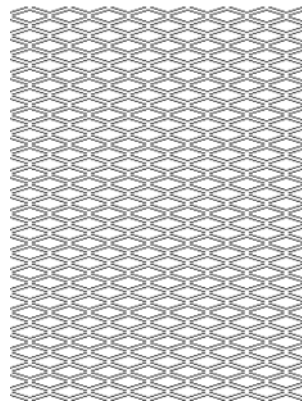
200x250



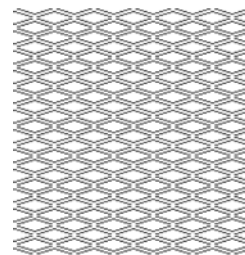
200x300



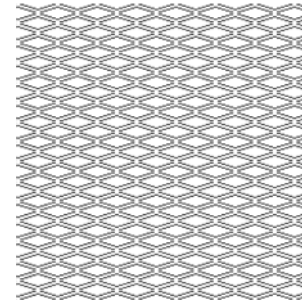
240x360



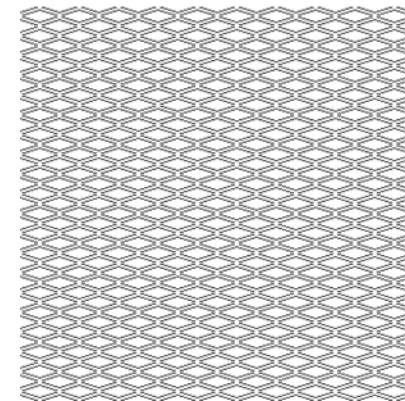
310x400



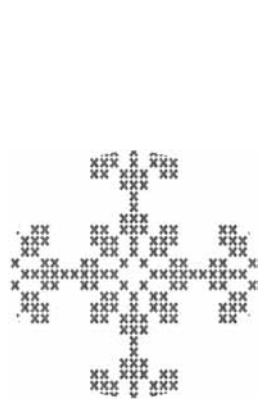
245x250



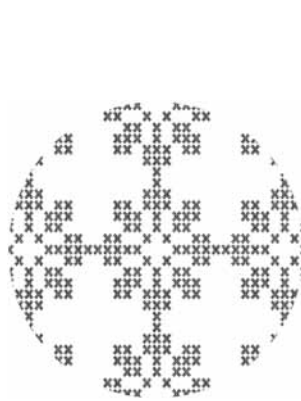
300x300



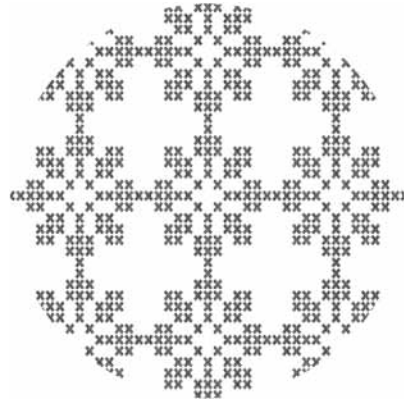
400x400



250x250 Kreis



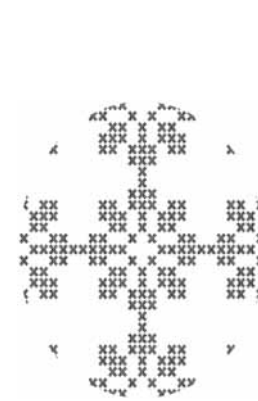
300x300 Kreis



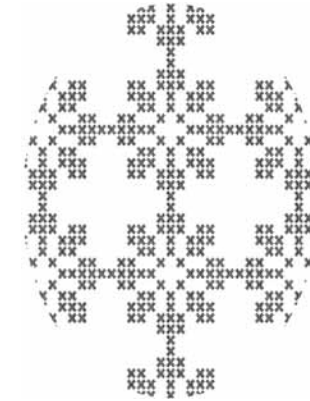
400x400 Kreis



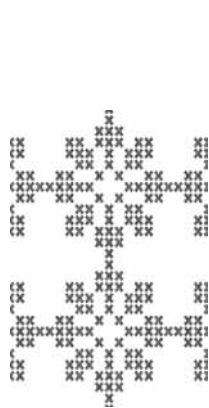
200x250 oval



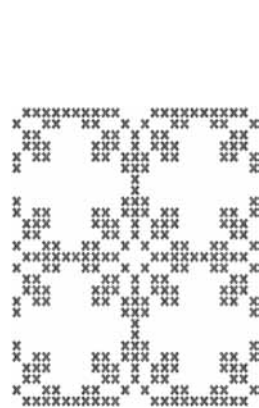
250x300 oval



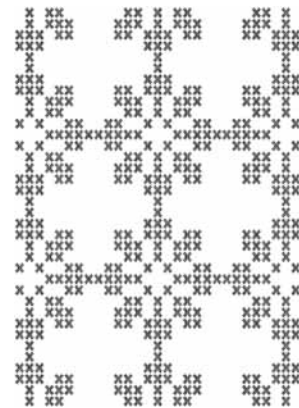
300x400 oval



200x300



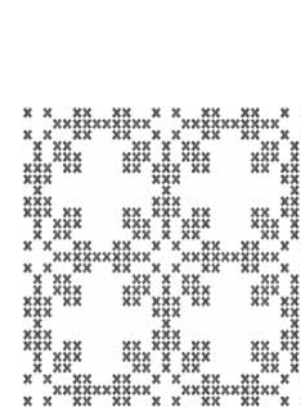
250x300



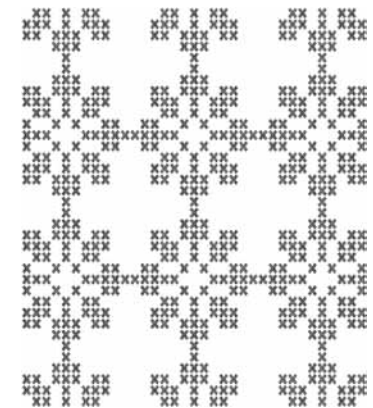
290x405



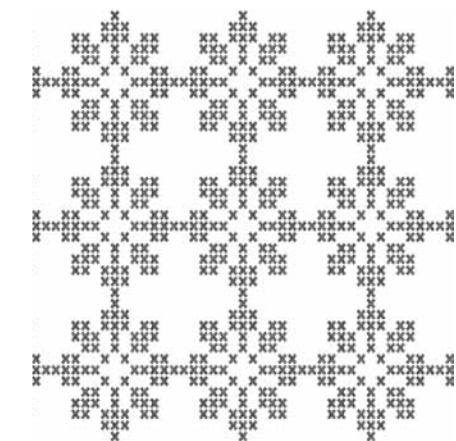
250x260



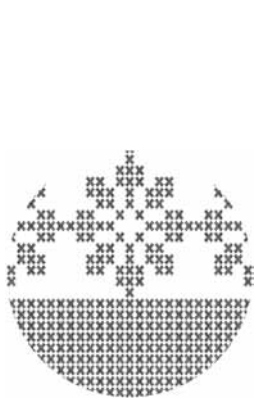
290x305



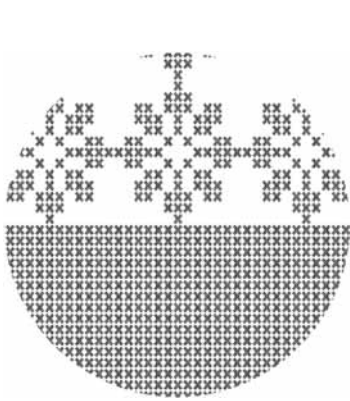
350x405



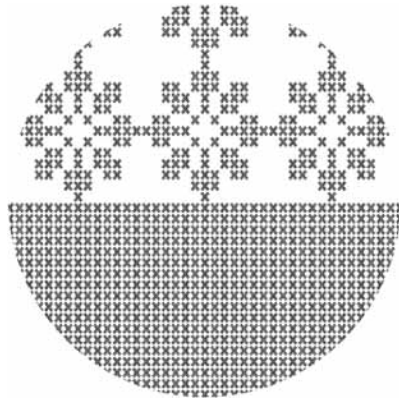
400x400



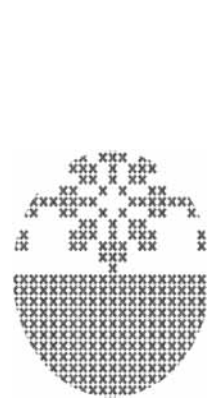
250x250 Kreis



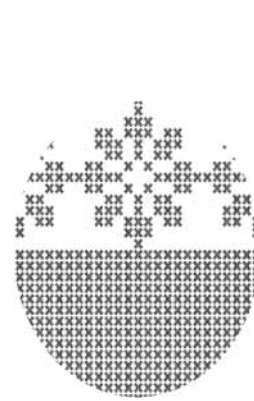
350x350 Kreis



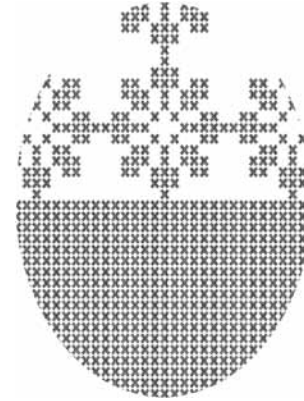
405x410 Kreis



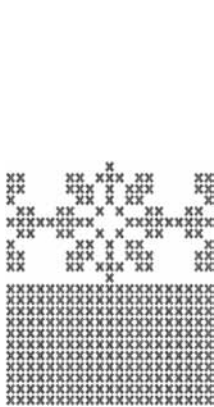
200x250 oval



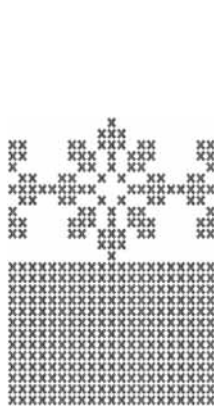
250x300 oval



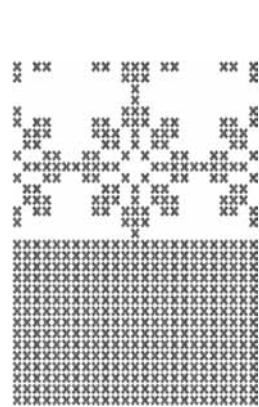
300x400 oval



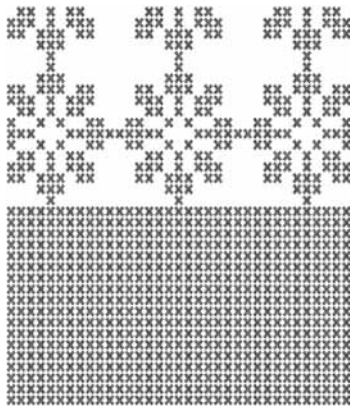
210x250



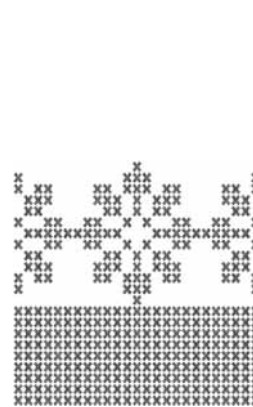
210x295



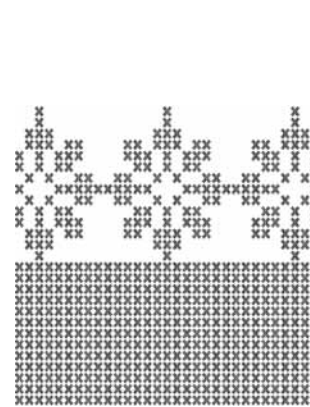
250x350



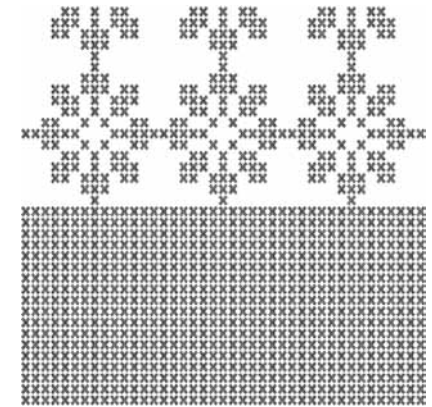
350x405



250x250



310x305



405x410