

# Bar stool

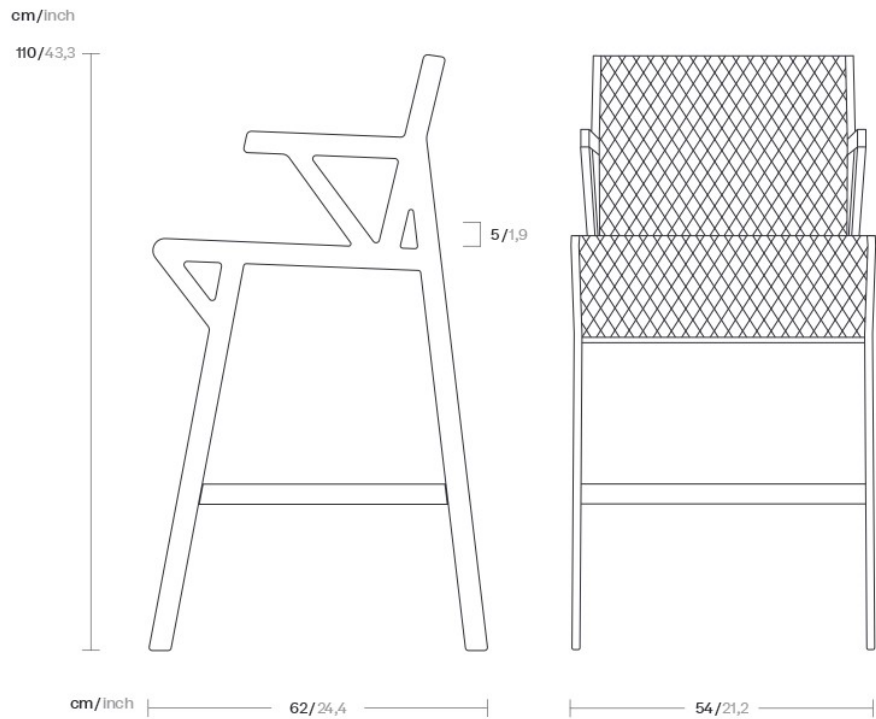
Designer  
Patricia Urquola

Collection  
Vieques

Reference  
KS4101200

1/4

Kettal Vieques is a collection characterised by the combination of an aluminum frame with a new and revolutionary three-dimensional fabric, Nido d'Ape, with exceptional technical features, created especially for this collection and exclusively for Kettal.



kettal

# Bar stool

Designer  
Patricia Urquola

Collection  
Vieques

Reference  
KS4101200

2/4

## Materials

### Aluminium

Antioxy, Heavy Load, Resistant  
En-1421, Kettalze-It, Anti-  
Scratch, Easy Clean,  
Flame Retardant M1, Eco Friendly  
Ecoembes Recycling Process

### Porotex Fabric Special, Laminate Fabric

Heavy Load 100.000 Cycles,  
Heavy Load Resistant 1000  
Decitex, Kettalze-It,  
Resist U.v. En-581-4, Easy Clean,  
Abrasion, Resistance 30.000  
Cycles, Quickdry

## Maintenance

Clean with mild soap using  
sponge or cloth. Be gentle  
while cleaning, do not scrub  
aggressively the fabric. Once  
cleaned please make sure you  
remove soap excess.

In case of aggressive stains  
clean with diluted household  
bleach.

Clean stains promptly. The  
longer it remains, more difficult  
will be to remove.

Once cleaned the fabric steam  
iron the fabric. Just use steam,  
be carefull NOT placing the  
iron directly in the fabric it will  
get damage.

## Frame Colour Options

## Terrain Paints



Chalk  
721



Bone  
678



Tuff  
103



Mist  
773



Flint  
734



London Clay  
729



Mahogany  
100



Carbon  
737



Lilac  
104



Feldspar  
082



Sepia  
088



Terra Rossa  
087



Magma  
086



Terracota  
085



Sahara  
139



Camomile  
106



Aquamarine  
107



Cobalt  
089



Indigo  
094



Jade  
091



Onyx  
101



Juniper  
092



Amazon  
102



Bronze  
093



Corten  
727



Claystone  
741



Sand Storm  
132



Pumice  
131



Galena  
105



Manganese  
726

# Bar stool

Designer  
Patricia Urquola

Collection  
Vieques

Reference  
KS4101200

3/4

## Fabric Options

## Porotex Parallel Fabrics



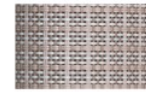
White Anemone  
527



Lace Coral  
528



Padina  
564



Saline  
571



Alaria  
572



Sponge  
536



Fucus  
537



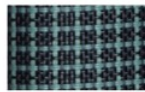
Urchin  
547



Kelp  
556



Turtle Grass  
553



Deep Ocean  
570



Winter Sea  
569



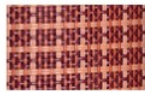
Xenla  
568



Plumarla  
567



Irish Moss  
559



Coral  
562



Dulse  
565

# Bar stool

Designer  
Patricia Urquola

Collection  
Vieques

Reference  
KS4101200

4/4

## Seat Cushion

## Terrain Fabrics Laminate



White Cliffs  
290



Dry Sand  
285



Porous Grey  
291



Limestone  
292



Fog  
289



Deer  
286



Wet Sand  
287



Cobblestone  
302



Cyprus Umber  
301



Loam  
297



Charcoal  
293



Arctic  
295



Fjord  
248



Cerulean  
314



Caribbean  
298



Atlantic  
311



Rainforest  
312



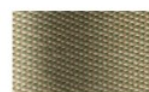
Lagoon  
249



Cedar  
288



Moss  
296



Olive  
313



Autumn  
315



Summer Sky  
317



Golden Sand  
303



Flamma  
304



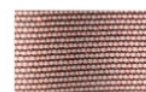
Sunrise  
299



Saffron  
305



Burnt Sienna  
306



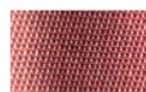
Ash Rose  
294



Cooper  
316



Dusk Pink  
307



Flamingo  
310



Coral  
309



Sandstone  
308