

VIRGIN DINING CHAIR

MAURO LIPPARINI



A refined game of balances sets the Virgin dining chair apart, thanks to the creative flair of Mauro Lipparini. Available in two versions, with or without armrests, the model relies on striking architectural allure. The rear support becomes a pillar resting on the floor, upholstered and covered, in contrast with the slim frontal metal legs. The contemporary tone suggests the soft lines of the Fifties.

TYPE / CHAIRS

TECHNICAL DESCRIPTION

Collection composed by sofas, chairs and armchairs with or without armrests. The feature of the whole collection is its softness as a result of an elegant and tailored recover of soft lines typical of the fifties. It also provides a thin armrest section, an elliptical recover in the sofa seat. A contrast between smooth and rough, between the linear frontal feet and those rough and relaxing back once.

In the armrests version is available the bicolor variant with different finishings for both the front upholstery and the back one.

MisuraEmme®



DESIGNER

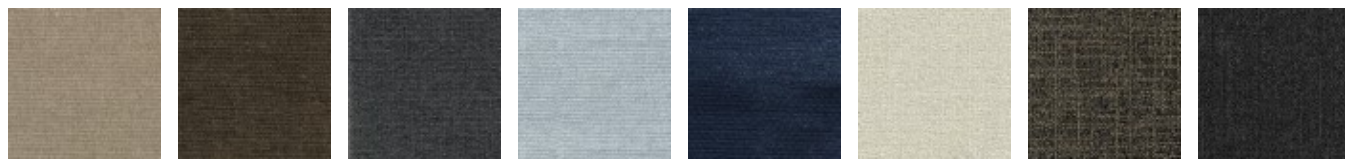
MAURO LIPPARINI

Mauro Lipparini earned a degree in Architecture in 1980 from Università degli Studi of Florence, where he also worked as a professor. He won the international design contests Young & Designer Milan (1987) and International Du Pont Award Köln (Germany, 1988 and 1989). Lipparini's intense activity in the field of industrial design covers office and home furniture, the textile industry and other products created for many companies in Europe and Japan. In architecture and interior design, Lipparini has concentrated mainly on private and public housing, on showrooms, retail sales outlets and exposition installations. Furthermore, Lipparini also designs and realizes advanced corporate identity image systems that range from graphics to editorial services to production. Lipparini's style is based on the essential shapes and the clear and decisive lines that are characteristic of natural minimalism. His creations are imbued with a joyful spirit and with an elating sense of aesthetic pleasure and creativity. Thanks to his free use of color, organic weave patterns and original visual ideas, Lipparini amplifies the palette of minimalism, conveying the spontaneity and power of this aesthetic style and projecting it towards a new era of great maturity and wellbeing.



COVER FINISHINGS

FABRICS



A_AS1 Saari

A_AS2 Saari

A_AS4 Saari

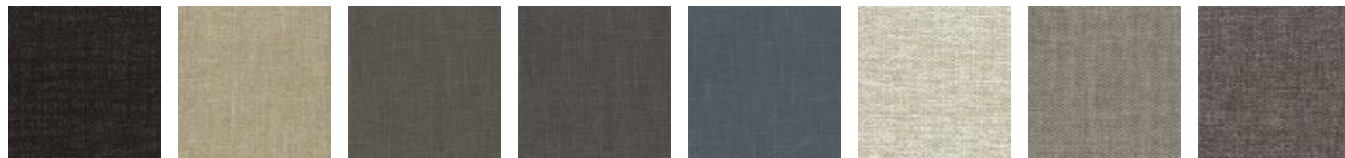
A_AS5 Saari

A_AS7 Saari

B_CAE Cocò

B_CAM Cocò

B_CAK Cocò



B_CAF Cocò

B_BC1
Burana

B_BC3
Burana

B_BC4
Burana

B_BC6
Burana

C_C10 Star

C_C11 Star

C_C17 Star



C_C16 Star

C_C18 Star

C_C15 Star

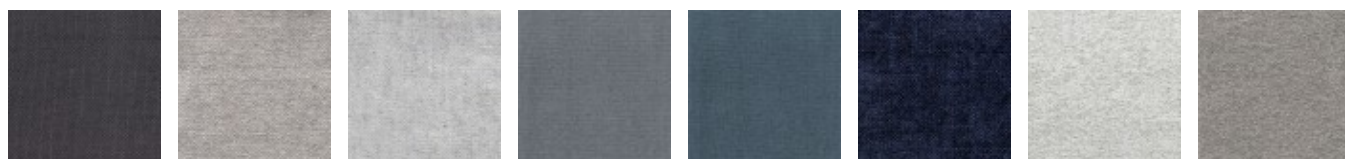
D_D91
Panama

D_D92
Panama

D_D93
Panama

D_D94
Panama

D_D95
Panama



D_D98
Panama

D_i71 Clou

D_i74 Clou

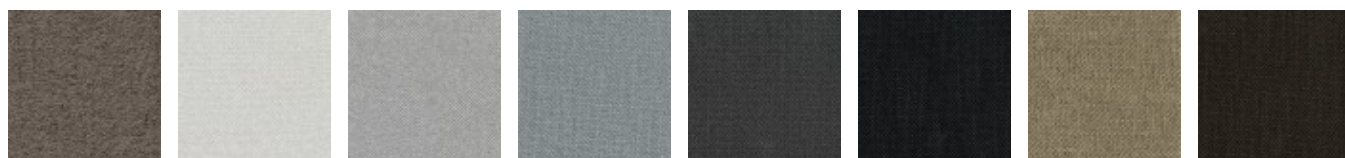
D_i79 Clou

D_i72 Clou

D_i78 Clou

D_D01
Ubaye

D_D03
Ubaye



D_D05
Ubaye

E_E20 Mood

E_E25 Mood

E_E22 Mood

E_E26 Mood

E_E27 Mood

E_E21 Mood

E_E28 Mood



E_E51 Lido

E_E52 Lido

E_E54 Lido

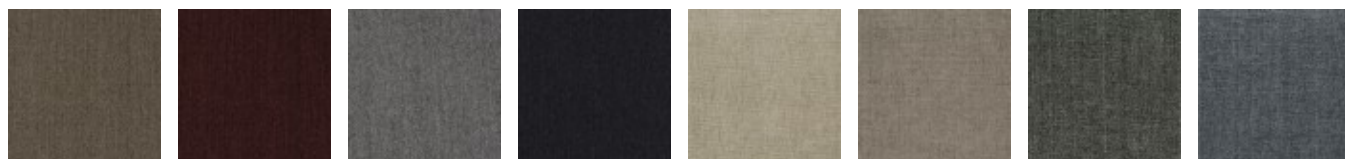
F_E50 Luxus

F_F01 Luxus

F_F02 Luxus

F_F03 Luxus

F_F05 Luxus



F_F11 Lama

F_F14 Lama

F_F12 Lama

F_F15 Lama

F_F25
Gaucho

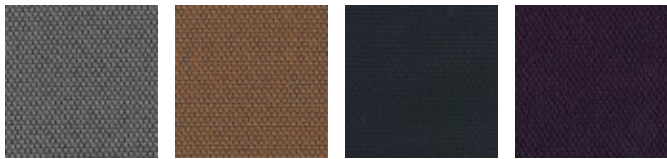
F_F21
Gaucho

F_F23
Gaucho

F_F24
Gaucho



F_F33 Velvet F_F35 Velvet F_F32 Velvet F_EM5 Velvet H_H42 Sera H_H44 Sera H_H47 Sera H_H48 Sera



H_H50 Opera H_H53 Opera H_H55 Opera H_H56 Opera

SMOOTH LEATHERS



H30 Gesso H38 Sand H36 Camoscio H32 Acacia H31 Naturale H37 Marmotta H71 Testa di Moro H35 Grigio Chiaro



H40 Blu Notte H73 Nero

NUBUCK



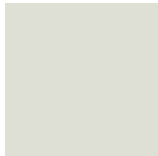
HN2 Carbone HN3 Grigio

SMOOTH ECO-LEATHERS

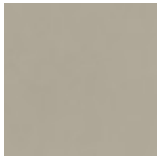


C_CE1 C_CD3 C_CF6 C_CD1 C_CD4 C_CD5

EMBOSSSED ECO-LEATHERS



C_CE3



C_CE5



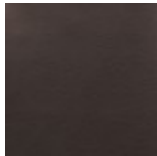
C_CL1



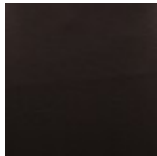
C_CL3



C_CL7



C_CL8



C_CL6

BACK FINISHINGS (BICOLOR VERSION)

SMOOTH LEATHERS



H30 Gesso

H38 Sand

H36
Camoscio

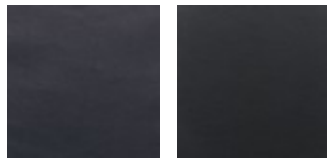
H32 Acacia

H31
Naturale

H37
Marmotta

H71 Testa di
Moro

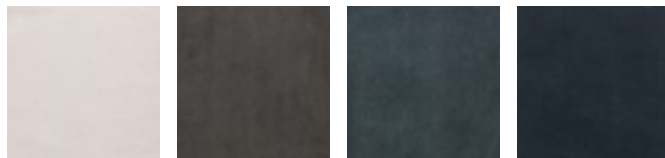
H35 Grigio
Chiaro



H40 Blu
Notte

H73 Nero

SUEDE LEATHERS



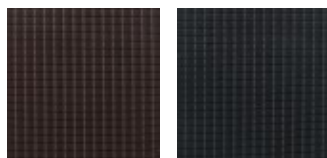
HA6 Neve

HA5
Marmotta

HA2 Nuvola

HA3 Blu

PRINTED LEATHERS



HV2
Marrone

HV1 Nero

NUBUCK



HN2
Carbone

HN3 Grigio

SMOOTH ECO-LEATHERS



C_CE1

C_CD3

C_CF6

C_CD1

C_CD4

C_CD5

EMBOSSSED ECO-LEATHERS



C_CE3

C_CE5

C_CL1

C_CL3

C_CL7

C_CL8

C_CL6

FEET FINISHINGS

METALS



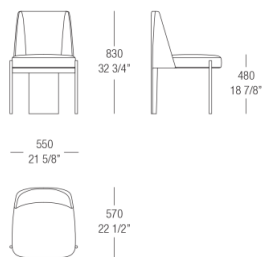
538

Verniciato

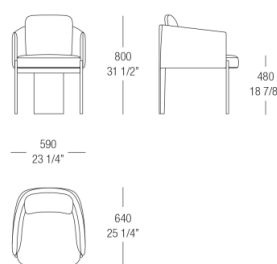
Nero

DIMENSIONS

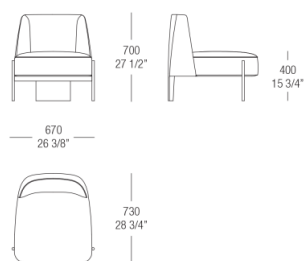
Chair without armrests



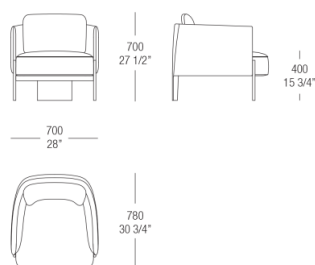
Chair with armrests



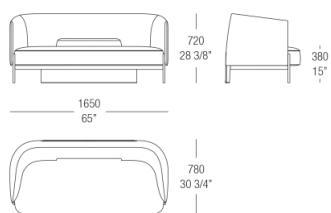
Armchair without armrests



Armchair with armrests



Linear sofa



Round sofa

