

# MICHELLE

MAURO LIPPARINI



A padded seat with fluid, versatile lines, the quintessence of pure design. The solid wood legs cross over and support the ergonomic shell, which combines two different tone-on-tone material choices.

## TYPE / CHAIRS

### TECHNICAL DESCRIPTION

*Chair available in two versions: wood fixed base in oak walnut or swivel base in glossy satin-finish aluminum or gun metal. Frame cold foamed in polyurethane in fabric, ecoleather, leather. Product tested for domestic and public use.*

*It is available the bicolor variant with different finishings for both the front upholstery and the back one.*



## DESIGNER

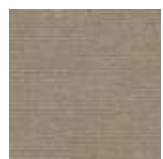
MAURO LIPPARINI

**Mauro Lipparini** earned a degree in Architecture in 1980 from Università degli Studi of Florence, where he also worked as a professor. He won the international design contests Young & Designer Milan (1987) and International Du Pont Award Köln (Germany, 1988 and 1989). Lipparini's intense activity in the field of industrial design covers office and home furniture, the textile industry and other products created for many companies in Europe and Japan. In architecture and interior design, Lipparini has concentrated mainly on private and public housing, on showrooms, retail sales outlets and exposition installations. Furthermore, Lipparini also designs and realizes advanced corporate identity image systems that range from graphics to editorial services to production. Lipparini's style is based on the essential shapes and the clear and decisive lines that are characteristic of natural minimalism. His creations are imbued with a joyful spirit and with an elating sense of aesthetic pleasure and creativity. Thanks to his free use of color, organic weave patterns and original visual ideas, Lipparini amplifies the palette of minimalism, conveying the spontaneity and power of this aesthetic style and projecting it towards a new era of great maturity and wellbeing.



# SEAT FINISHINGS

## FABRICS



A\_AS1 Saari



A\_AS2 Saari



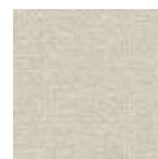
A\_AS4 Saari



A\_AS5 Saari



A\_AS7 Saari



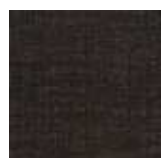
B\_CAE Cocò



B\_CAM  
Cocò



B\_CAK Cocò



B\_CAF Cocò



B\_BC1  
Burana



B\_BC3  
Burana



B\_BC4  
Burana



B\_BC6  
Burana



C\_C10 Star



C\_C11 Star



C\_C17 Star



C\_C16 Star



C\_C18 Star



C\_C15 Star



D\_D91  
Panama



D\_D92  
Panama



D\_D93  
Panama



D\_D94  
Panama



D\_D95  
Panama



D\_D98  
Panama



D\_i71 Clou



D\_i74 Clou



D\_i79 Clou



D\_i72 Clou



D\_i78 Clou



D\_D01  
Ubaye



D\_D03  
Ubaye



D\_D05  
Ubaye



E\_E20 Mood



E\_E25 Mood



E\_E22 Mood



E\_E26 Mood



E\_E27 Mood



E\_E21 Mood



E\_E28 Mood



E\_E51 Lido



E\_E52 Lido



E\_E54 Lido



F\_F50 Luxus



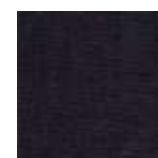
F\_F01 Luxus



F\_F02 Luxus



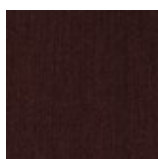
F\_F03 Luxus



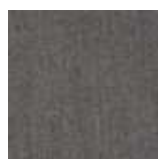
F\_F05 Luxus



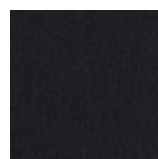
F\_F11 Lama



F\_F14 Lama



F\_F12 Lama



F\_F15 Lama



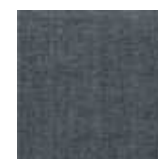
F\_F25  
Gaucho



F\_F21  
Gaucho



F\_F23  
Gaucho



F\_F24  
Gaucho



F\_F33  
Velvet

F\_F35  
Velvet

F\_F32  
Velvet

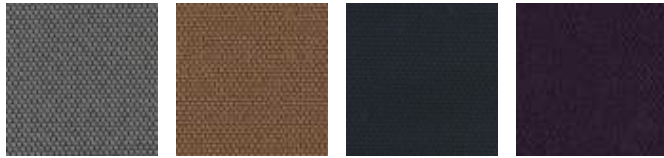
F\_EM5  
Velvet

H\_H42 Sera

H\_H44 Sera

H\_H47 Sera

H\_H48 Sera



H\_H50  
Opera

H\_H53  
Opera

H\_H55  
Opera

H\_H56  
Opera

## SMOOTH LEATHERS



H30 Gesso

H38 Sand

H36  
Camoscio

H32 Acacia

H31  
Naturale

H37  
Marmotta

H71 Testa di  
Moro

H35 Grigio  
Chiaro



H40 Blu  
Notte

H73 Nero

## NUBUCK



HN2  
Carbone

HN3 Grigio

## SMOOTH ECO-LEATHERS



C\_CE1

C\_CD3

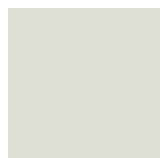
C\_CF6

C\_CD1

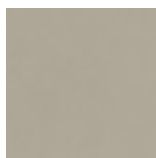
C\_CD4

C\_CD5

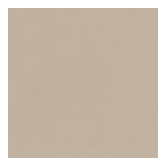
EMBOSSSED ECO-LEATHERS



C\_CE3



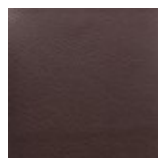
C\_CE5



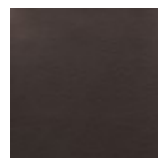
C\_CL1



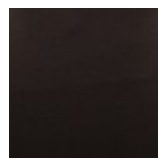
C\_CL3



C\_CL7



C\_CL8



C\_CL6

# BACK FINISHINGS (BICOLOR VERSION)

## FABRICS



A\_AS1 Saari



A\_AS2 Saari



A\_AS4 Saari



A\_AS5 Saari



A\_AS7 Saari



B\_CAE Cocò



B\_CAM  
Cocò



B\_CAK Cocò



B\_CAF Cocò



B\_BC1  
Burana



B\_BC3  
Burana



B\_BC4  
Burana



B\_BC6  
Burana



C\_C10 Star



C\_C11 Star



C\_C17 Star



C\_C16 Star



C\_C18 Star



C\_C15 Star



D\_D91  
Panama



D\_D92  
Panama



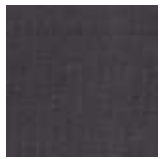
D\_D93  
Panama



D\_D94  
Panama



D\_D95  
Panama



D\_D98  
Panama



D\_i71 Clou



D\_i74 Clou



D\_i79 Clou



D\_i72 Clou



D\_i78 Clou



D\_D01  
Ubaye



D\_D03  
Ubaye



D\_D05  
Ubaye



E\_E20 Mood



E\_E25 Mood



E\_E22 Mood



E\_E26 Mood



E\_E27 Mood



E\_E21 Mood



E\_E28 Mood



E\_E51 Lido



E\_E52 Lido



E\_E54 Lido



F\_F50 Luxus



F\_F01 Luxus



F\_F02 Luxus



F\_F03 Luxus



F\_F05 Luxus



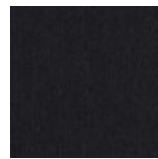
F\_F11 Lama



F\_F14 Lama



F\_F12 Lama



F\_F15 Lama



F\_F25  
Gaucho



F\_F21  
Gaucho



F\_F23  
Gaucho



F\_F24  
Gaucho



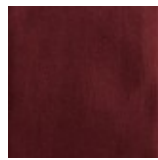
F\_F33  
Velvet



F\_F35  
Velvet



F\_F32  
Velvet



F\_EM5  
Velvet



H\_H42 Sera



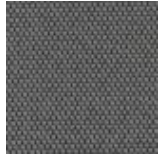
H\_H44 Sera



H\_H47 Sera



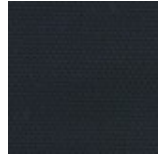
H\_H48 Sera



H\_H50  
Opera



H\_H53  
Opera



H\_H55  
Opera

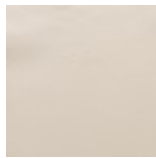


H\_H56  
Opera

## SMOOTH LEATHERS



H30 Gesso



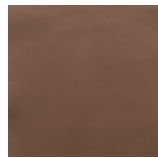
H38 Sand



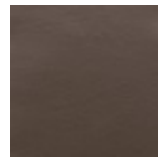
H36  
Camoscio



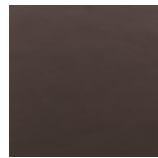
H32 Acacia



H31  
Naturale



H37  
Marmotta



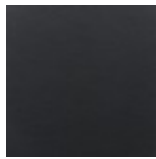
H71 Testa di  
Moro



H35 Grigio  
Chiaro



H40 Blu  
Notte

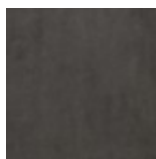


H73 Nero

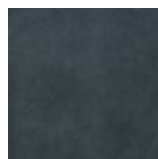
## SUEDE LEATHERS



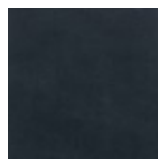
HA6 Neve



HA5  
Marmotta

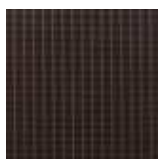


HA2 Nuvola

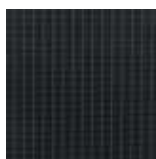


HA3 Blu

## PRINTED LEATHERS



HV2  
Marrone



HV1 Nero



## NUBUCK



HN2  
Carbone

HN3 Grigio

## SMOOTH ECO-LEATHERS



C\_CE1

C\_CD3

C\_CF6

C\_CD1

C\_CD4

C\_CD5

## EMBOSSED ECO-LEATHERS



C\_CE3

C\_CE5

C\_CL1

C\_CL3

C\_CL7

C\_CL8

C\_CL6

# BASE FINISHINGS

## METALS



501 Cromo  
naturale



524  
Verniciato  
Canna di  
fucile

## MATT VENEERS



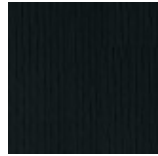
53 Olmo  
grey



50 Rovere  
cenere



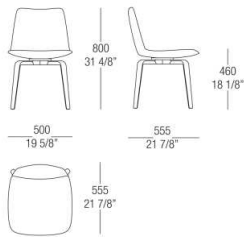
52 Rovere  
fumé



51 Oak  
Black

# DIMENSIONS

## Wood fixed base



## Metal swivel base

