

# Dining chair teak

Designer  
Patricia Urquiola

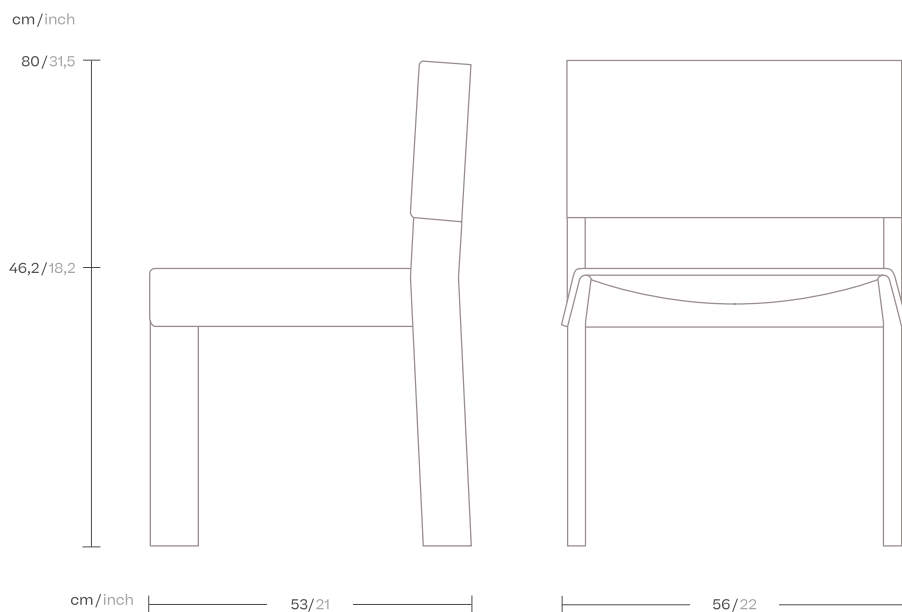
Collection  
Band

Reference  
KS2800200

1/3

The idea behind the BAND collection is the breakdown of structure. An object designed using an ensemble of pieces. The chair's design intentionally challenges the classic sophisticated lines of furniture design and becomes something schematic, a conceptual programme.

A structure made up of repetitive angular shapes that give centre stage to its raw materials, and can be formed entirely of aluminium or teak wood, and of Terrain Fabrics.



kettal

# Dining armchair teak

Designer  
Patricia Urquiola

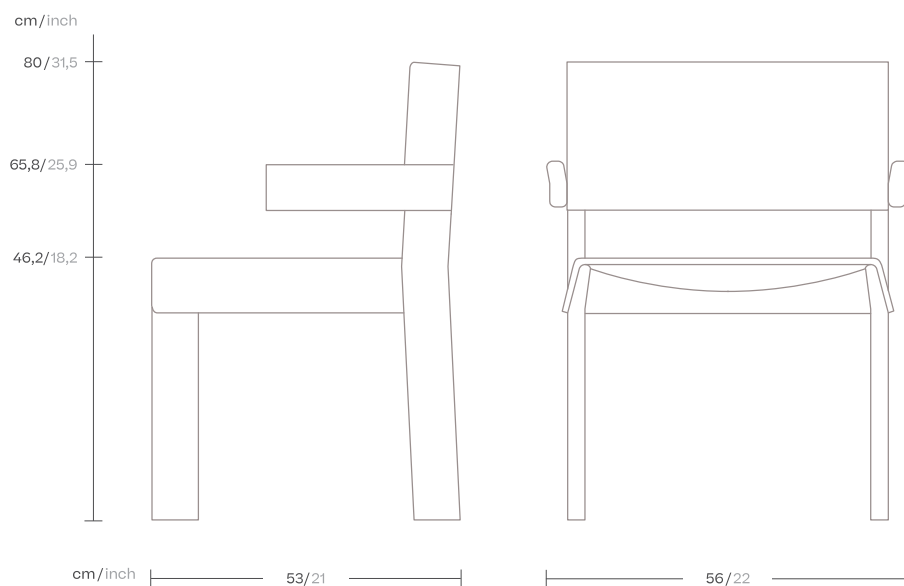
Collection  
Band

Reference  
KS2800400

1/3

The idea behind the BAND collection is the breakdown of structure. An object designed using an ensemble of pieces. The chair's design intentionally challenges the classic sophisticated lines of furniture design and becomes something schematic, a conceptual programme.

A structure made up of repetitive angular shapes that give centre stage to its raw materials, and can be formed entirely of aluminium or teak wood, and of Terrain Fabrics.



kettal

# Dining armchair teak

Designer  
Patricia Urquiola

Collection  
Band

Reference  
KS2800400

2/3

## Materials

---

### Fabric

Heavy Load 100.000 Cycles,  
Heavy Load Resistant 1000  
Decitex, Kettalize-It, Resist U.v.  
En-581-4, Easy Clean, Abrasion,  
Resistance 30.000 Cycles,  
Quickdry

### Teak

Teak A-Grade, Eco Friendly  
Oeko-Tek

## Frame

---



Teak  
904

## Maintenance

---

Clean with mild soap using  
sponge or cloth. Be gentle  
while cleaning, do not scrub  
aggressively the fabric. Once  
cleaned please make sure you  
remove soap excess.

In case of aggressive stains  
clean with diluted household  
bleach.

Clean stains promptly. The  
longer it remains, more difficult  
will be to remove.

Once cleaned the fabric steam  
iron the fabric. Just use steam,  
be carefull NOT placing the  
iron directly in the fabric it will  
get damage.

# Dining armchair aluminium

Designer  
Patricia Urquiola

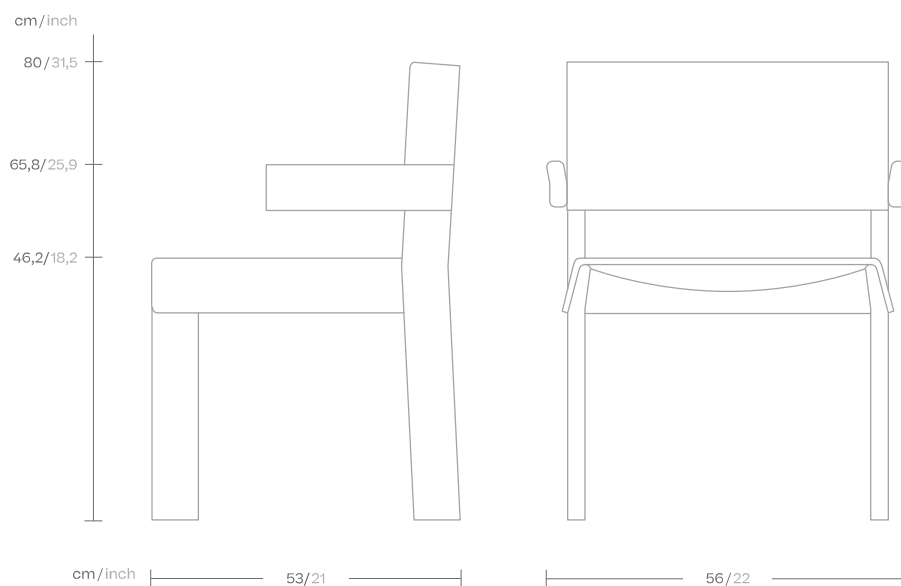
Collection  
Band

Reference  
KS2800300

1/3

The idea behind the BAND collection is the breakdown of structure. An object designed using an ensemble of pieces. The chair's design intentionally challenges the classic sophisticated lines of furniture design and becomes something schematic, a conceptual programme.

A structure made up of repetitive angular shapes that give centre stage to its raw materials, and can be formed entirely of aluminium or teak wood, and of Terrain Fabrics.



kettal

# Dining chair aluminium

Designer  
Patricia Urquiola

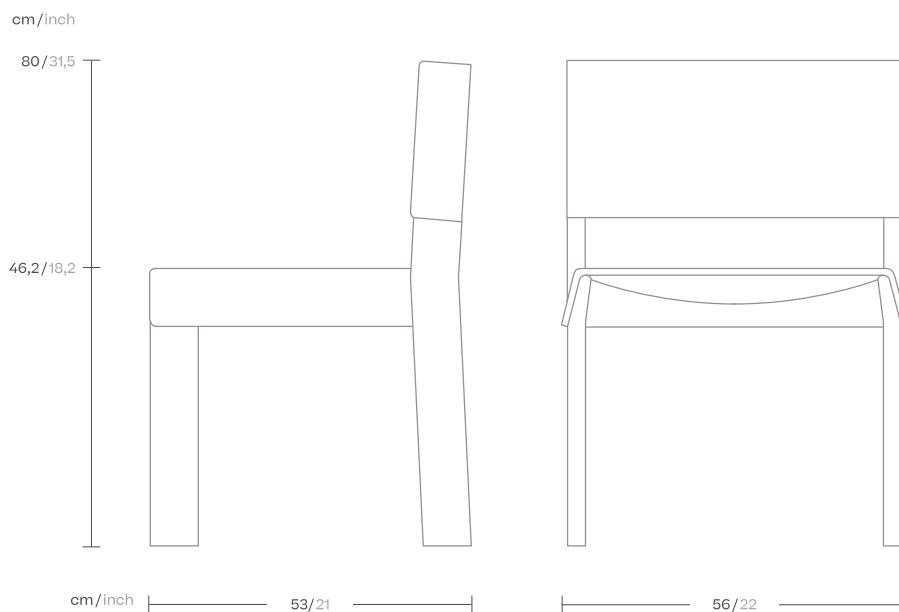
Collection  
Band

Reference  
KS2800100

1/3

The idea behind the BAND collection is the breakdown of structure. An object designed using an ensemble of pieces. The chair's design intentionally challenges the classic sophisticated lines of furniture design and becomes something schematic, a conceptual programme.

A structure made up of repetitive angular shapes that give centre stage to its raw materials, and can be formed entirely of aluminium or teak wood, and of Terrain Fabrics.



kettal

# Dining chair aluminium

Designer  
Patricia Urquiola

Collection  
Band

Reference  
KS2800100

2/3

## Materials

### Fabric

Heavy Load 100.000 Cycles,  
Heavy Load Resistant 1000  
Decitex, Kettalize-It, Resist U.v.  
En-581-4, Easy Clean, Abrasion,  
Resistance 30.000 Cycles,  
Quickdry

### Aluminium

Antioxy, Heavy Load, Resistant  
En-1421, Kettalize-It, Anti-  
Scratch, Easy Clean, Flame  
Retardant M1, Eco Friendly  
Ecoembes Recycling Process

## Maintenance

Clean with mild soap using  
sponge or cloth. Be gentle  
while cleaning, do not scrub  
aggressively the fabric. Once  
cleaned please make sure you  
remove soap excess.

In case of aggressive stains  
clean with diluted household  
bleach.

Clean stains promptly. The  
longer it remains, more difficult  
will be to remove.

Once cleaned the fabric steam  
iron the fabric. Just use steam,  
be carefull NOT placing the  
iron directly in the fabric it will  
get damage.

## Frame Colour Options

## Terrain Paints



Chalk  
721



Bone  
678



Tuff  
103



Mist  
773



Flint  
734



London Clay  
729



Mahogany  
100



Carbon  
737



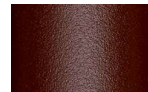
Lilac  
104



Feldspar  
082



Sepia  
088



Terra Rossa  
087



Magma  
086



Terracota  
085



Sahara  
139



Camomile  
106



Aquamarine  
107



Cobalt  
089



Indigo  
094



Jade  
091



Onyx  
101



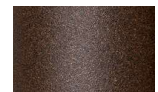
Juniper  
092



Amazon  
102



Bronze  
093



Corten  
727



Claystone  
741



Sand Storm  
132



Pumice  
131



Galena  
105



Manganese  
726

# Dining chair aluminium

Designer  
Patricia Urquiola

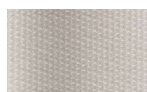
Collection  
Band

Reference  
KS2800100

3/3

## Fabric Options

## Terrain Fabrics Laminate



White Cliffs  
290



Dry Sand  
285



Porous Grey  
291



Limestone  
292



Fog  
289



Deer  
286



Wet Sand  
287



Cobblestone  
302



Cyprus Umber  
301



Loam  
297



Charcoal  
293



Arctic  
295



Fjord  
248



Cerulean  
314



Caribbean  
298



Atlantic  
311



Rainforest  
312



Lagoon  
249



Cedar  
288



Moss  
296



Olive  
313



Autumn  
315



Summer Sky  
317



Golden Sand  
303



Flamma  
304



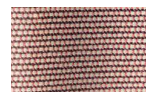
Sunrise  
299



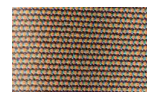
Saffron  
305



Burnt Sienna  
306



Ash Rose  
294



Cooper  
316



Dusk Pink  
307



Flamingo  
310



Coral  
309



Sandstone  
308