

# COPINE STEEL

Design G. & O. Buratti

POLTRONA | ARMCHAIR

2020



# COPINE STEEL

Design G. & O. Buratti

POLTRONA | ARMCHAIR

2020

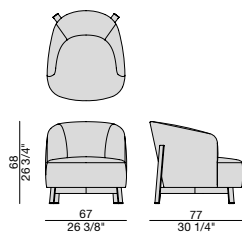
Poltrona con struttura basamento metallico in nichel nero o ottone bronzato spazzolato e rivestimento nei tessuti della collezione. Rivestimento sfoderabile in tessuto e non sfoderabile in pelle. Possibilità di combinare diversi tessuti per la struttura imbottita interna ed esterna. Scocca interna in multistrato di pioppo e massello di abete con sedile cinghiato. Imbottitura in poliuretano a quote differenziate.

Armchair with metal frame in black nickel or brushed bronzed brass finish and cover in the fabrics of the collection. The cover in fabric is removable, while the cover in leather is non-removable. It is possible to combine different fabrics for the outer and inner parts of the upholstered structure. Inner shell in poplar plywood and solid fir wood with belted seat. The padding is in crush-proof polyurethane with different densities.

Sessel mit Gestell aus Metall, verfügbar in den Ausführungen Nickel schwarz, oder bronziertem, gebürstetem Messing. Bezüge in den Stoffen aus der Kollektion. Der Bezug aus Stoff ist abziehbar, während Bezüge aus Leder festbetzogen sind. Es besteht die Möglichkeit unterschiedliche Bezüge für die äussere und innere Polsterstruktur zu kombinieren. Die Sitzschale wird aus massivem Tannenholz, Pappelholz und Polstergurten gefertigt. Die Struktur wird mit unverformbaren Polyurethanschaum in unterschiedlichen Dichten abgepolstert.

Fauteuil avec structure en métal nickel noir ou laiton bronzé brossé. Revêtement déhoussable dans les tissus de la collection, mais fixe dans la version en cuir. Possibilité de combiner tissus différents pour la partie intérieure et extérieure de la structure rembourrée. Coque intérieure en peuplier contreplaqué et sapin massif et siège avec sangles. Rembourrage en polyuréthane à densité différenciée.

Butaca con estructura en metal en acabado níquel negro o latón bronceado cepillado y revestimiento desenfundable en las telas de la colección y no desenfundable en piel. Es posible combinar diferentes telas para la parte frontal del respaldo y el asiento y para la parte trasera del respaldo y la parte baja de la estructura. Estructura interna en contrachapado de abedul y abeto macizo, con asiento con correas. Relleno de poliuretano expandido de densidades diferenciadas.



# COPINE STEEL

POLTRONA | ARMCHAIR

Design G. & O. Buratti

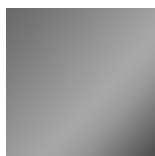
2020



## Metallo | Metal



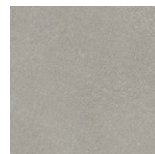
OTTONE BRONZATO  
SPAZZOLATO  
Brushed bronzed brass



NICHEL NERO  
Black Nickel

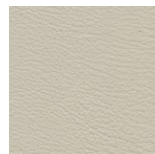
## Pelle | Leather

### Cat. LUX



Nabuk

### Cat. PLUS



Pelle PLUS

### Cat. EXTRA



Pelle EXTRA

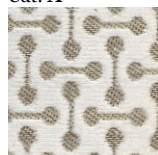
### Cat. PELLE



Pelle

## Rivestimento | Cover

### Cat. A



Hound

### Cat. B



Bouclage



Milord

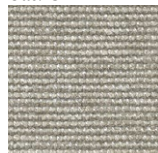


Motley



Rabat

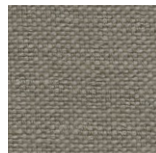
### Cat. C



Arman



Fashion



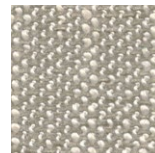
Flax



Ikat



Loom



Madras



Moleskin



Moran



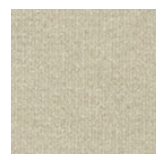
Patch



Serge



Thalys



Velvet

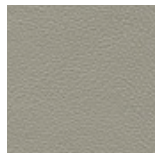


Wool

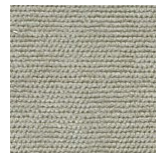
### Cat. D



Astra



Ecopelle



Range



Tress

### Cat. E



Cotone



Dorian



In Bianco/Calico

### Cat. COM

Disponibile con tessuto fornito dal cliente.

Available with fabric supplied by the customer.

Verfügbar mit Kundenstoff.

Disponible avec tissu du client.

Disponible con tela suministrada por el cliente.

# COPINE WOOD

POLTRONA | ARMCHAIR

Design G. & O. Buratti

2020



# COPINE WOOD

Design G. & O. Buratti

POLTRONA | ARMCHAIR

2020

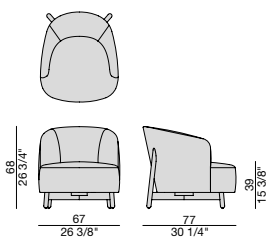
Poltrona con struttura basamento in massello di noce canaletta e rivestimento nei tessuti della collezione. Rivestimento sfoderabile in tessuto e non sfoderabile in pelle. Possibilità di combinare diversi tessuti per la struttura imbottita interna ed esterna. Scocca interna in multistrato di pioppo e massello di abete con sedile cinghiato. Imbottitura in poliuretano a quote differenziate.

Armchair with frame in solid canaletta walnut and cover in the fabrics of the collection. The cover in fabric is removable, while the cover in leather is non-removable. It is possible to combine different fabrics for the outer and inner parts of the upholstered structure. Inner shell in poplar plywood and solid fir wood with belted seat. The padding is in crush-proof polyurethane with different densities.

Sessel mit Gestell aus massivem Nussbaum canaletta. Bezüge in den Stoffen aus der Kollektion. Der Bezug aus Stoff ist abziehbar, während Bezüge aus Leder festbetztogen sind. Es besteht die Möglichkeit unterschiedliche Bezüge für die äussere und innere Polsterstruktur zu kombinieren. Die Sitzschale wird aus massivem Tannenholz, Pappelholz und Polstergurten gefertigt. Die Struktur wird mit unverformbaren Polyurethanschaum in unterschiedlichen Dichten abgepolstert.

Fauteuil avec structure en noyer canaletta massif et revêtement déhoussable dans les tissus de la collection, mais fixe dans la version en cuir. Possibilité de combiner tissus différents pour la partie intérieure et extérieure de la structure rembourrée. Coque intérieure en peuplier contreplaqué et sapin massif et siège avec sangles. Rembourrage en polyuréthane à densité différenciée.

Butaca con estructura de nogal canaletta y revestimiento desenfundable en las telas de la colección y no desenfundable en piel. Es posible combinar diferentes telas para la parte frontal del respaldo y el asiento y para la parte trasera del respaldo y la parte baja de la estructura. Estructura interna en contrachapado de abedul y abeto macizo, con asiento con correas. Relleno de poliuretano expandido de densidades diferenciadas.



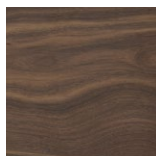
# COPINE WOOD

Design G. & O. Buratti

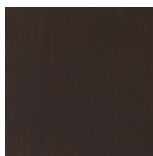
POLTRONA | ARMCHAIR

2020

## Essenze | Wood



NOCE CANALETTA  
Canaletta Walnut

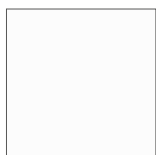


NOCE CANALETTA  
Canaletta Walnut  
tinto/stained moka



NOCE CANALETTA  
Canaletta Walnut  
tinto/stained wengé

## Laccato opaco poro chiuso | Matt Lacquered closed pore



BIANCO  
White  
(RAL 9016)



AVORIO  
Ivory  
(RAL 1013)



ARGILLA  
Argilla  
(RAL 7006)



PIOMBO  
Piombo  
(NCS S5005G20Y)



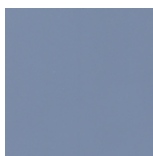
NERO  
Black  
(RAL 9005)



GRANATA  
Granata  
(NCS S4050Y90R)



PISTACCHIO  
Pistacchio  
(PANTONE 5825)



AVIO  
Avio  
(PANTONE 5415)



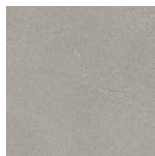
IRON  
Iron  
(RAL 7011)



CIOCCOLATO  
Chocolate  
(RAL 8019)

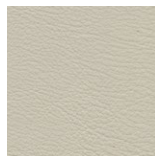
## Pelle | Leather

### Cat. LUX



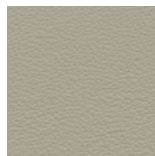
Nabuk

### Cat. PLUS



Pelle PLUS

### Cat. EXTRA



Pelle EXTRA

### Cat. PELLE



Pelle

## Rivestimento | Cover

### Cat. A



Hound

### Cat. B



Bouclage



Milord



Motley



Rabat

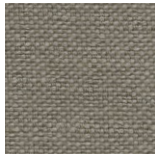
### Cat. C



Arman



Fashion



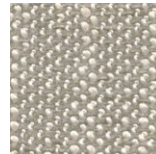
Flax



Ikat



Loom



Madras



Moleskin



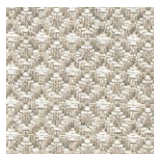
Moran



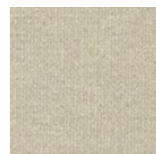
Patch



Serge



Thalys



Velvet

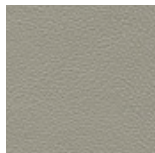


Wool

### Cat. D



Astra



Ecopelle



Range



Tress

### Cat. E



Cotone



Dorian



In Bianco/Calico

### Cat. COM

Disponibile con tessuto fornito dal cliente.

Available with fabric supplied by the customer.

Verfügbar mit Kundenstoff.

Disponible avec tissu du client.

Disponible con tela suministrada por el cliente.