

SURFACE

MARCO PIVA



La raffinata eleganza di **Surface** nasce dalla sinuosità delle sue linee. L'accostamento di colori e materiali differenti definisce il confine tra interno ed esterno creando un nido accogliente e soffice.

TIPOLOGIA / POLTRONE

CARATTERISTICHE TECNICHE

***Scocca** in poliuretano schiumato a freddo con rivestimento in tessuto o pelle, sfoderabile da personale esperto.*

È disponibile la variante bicolor con finiture diverse per il rivestimento della parte anteriore e il retro.



DESIGNER

MARCO PIVA

Emozionante, fluido e funzionale, questo è il linguaggio che contraddistingue le realizzazioni di **Marco Piva** legate all'Architettura, al Product e a l'Interior Design. Lo sforzo nella ricerca materica e tecnologica, il valore della differenziazione, della contaminazione e dell'innovazione, sfociano in una intensa attività progettuale, divenuta una delle più rappresentative del panorama italiano della creatività e del design. Viaggiatore prima ancora che progettista, Marco Piva studia e crea soluzioni intrise di libertà stilistica. In Giappone, a Osaka, ha partecipato alla progettazione e costruzione dell'innovativo complesso residenziale Next 21, negli Emirati Arabi Uniti a Dubai ha progettato i complessi alberghiero-residenziali Oceana e Tiara di Palm Jumeirah. Ha realizzato il Laguna Palace a Mestre, il Port Palace a Montecarlo, in Russia l'Hotel Mirage a Kazan, l'Una Hotel di Bologna, il THotel di Cagliari, il DoubleTree by Hilton a Mogliano Veneto, il complesso multifunzionale Le Terrazze a Treviso, il prestigioso Excelsior Hotel Gallia a Milano. Recenti sviluppi sono il Centro Direzionale di Feng Tai a Pechino, il Centro Culturale di Yuhang, il Master Plan sul Dianshan Lake a Shanghai, le Ville private di Beverly Hills. Ha disegnato inoltre il Concept delle vetrine Bulgari di tutto il mondo e le Lounges Casa Alitalia per Alitalia. Attualmente è impegnato nella realizzazione di complessi alberghieri e prestigiose residenze private in Cina, Stati Uniti, India, Montecarlo, Emirati Arabi, Italia, Albania e Algeria, e nella progettazione di prodotti di design per le più importanti aziende.

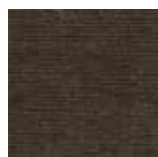


FINITURE RIVESTIMENTO

TESSUTI



A_AS1 Saari



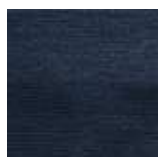
A_AS2 Saari



A_AS4 Saari



A_AS5 Saari



A_AS7 Saari



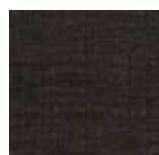
B_CAE Cocò



B_CAM
Cocò



B_CAK Cocò



B_CAF Cocò



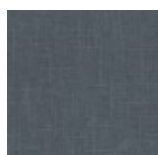
B_BC1
Burana



B_BC3
Burana



B_BC4
Burana



B_BC6
Burana



C_C10 Star



C_C11 Star



C_C17 Star



C_C16 Star



C_C18 Star



C_C15 Star



D_D91
Panama



D_D92
Panama



D_D93
Panama



D_D94
Panama



D_D95
Panama



D_D98
Panama



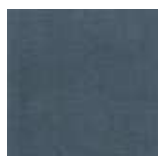
D_i71 Clou



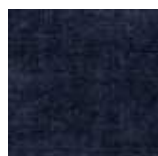
D_i74 Clou



D_i79 Clou



D_i72 Clou



D_i78 Clou



D_D01
Ubaye



D_D03
Ubaye



D_D05
Ubaye



E_E20 Mood



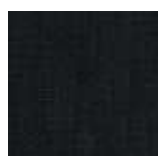
E_E25 Mood



E_E22 Mood



E_E26 Mood



E_E27 Mood



E_E21 Mood



E_E28 Mood



E_E51 Lido



E_E52 Lido



E_E54 Lido



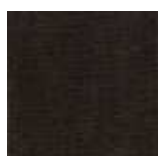
F_F50 Luxus



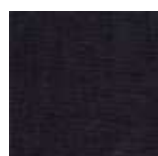
F_F01 Luxus



F_F02 Luxus



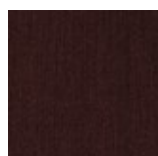
F_F03 Luxus



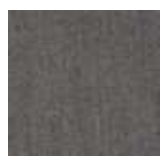
F_F05 Luxus



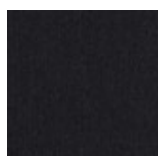
F_F11 Lama



F_F14 Lama



F_F12 Lama



F_F15 Lama



F_F25
Gaucho



F_F21
Gaucho



F_F23
Gaucho



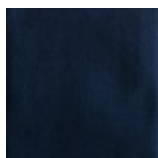
F_F24
Gaucho



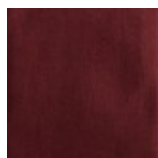
F_F33
Velvet



F_F35
Velvet



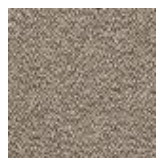
F_F32
Velvet



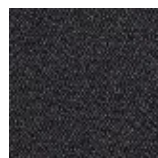
F_EM5
Velvet



H_H42 Sera



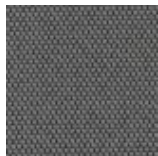
H_H44 Sera



H_H47 Sera



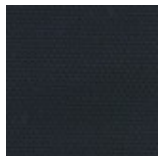
H_H48 Sera



H_H50
Opera



H_H53
Opera



H_H55
Opera



H_H56
Opera

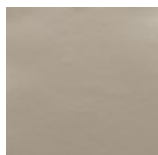
PELLI LISCE



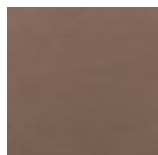
H30 Gesso



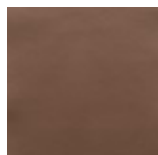
H38 Sand



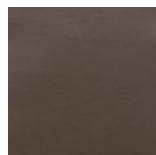
H36
Camoscio



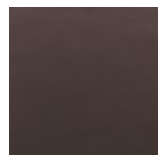
H32 Acacia



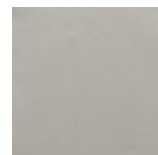
H31
Naturale



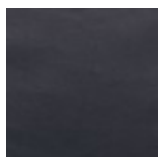
H37
Marmotta



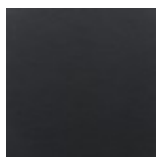
H71 Testa di
Moro



H35 Grigio
Chiaro

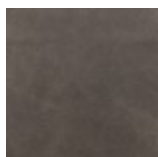


H40 Blu
Notte

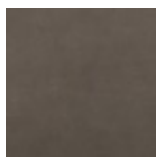


H73 Nero

PELLI NABUCCATE

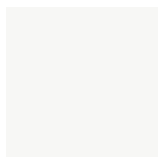


HN2
Carbone



HN3 Grigio

ECOPELLI LISCE



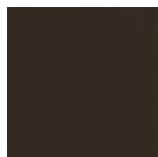
C_CE1



C_CD3



C_CF6



C_CD1

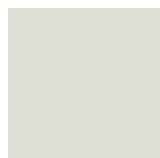


C_CD4

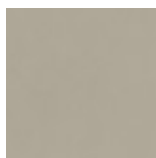


C_CD5

ECOPELLI LAVORATE



C_CE3



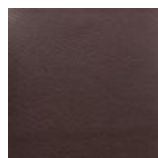
C_CE5



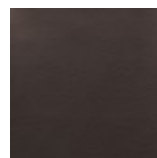
C_CL1



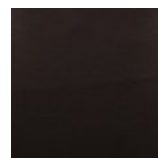
C_CL3



C_CL7



C_CL8



C_CL6

FINITURE RETRO (VERSIONE BICOLOR)

PELLI LISCE



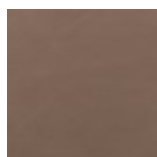
H30 Gesso



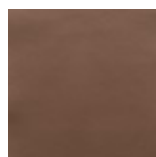
H38 Sand



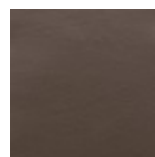
H36
Camoscio



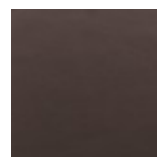
H32 Acacia



H31
Naturale



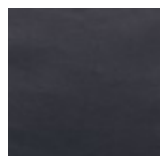
H37
Marmotta



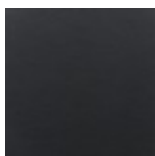
H71 Testa di
Moro



H35 Grigio
Chiaro

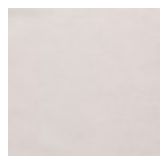


H40 Blu
Notte

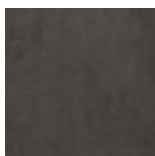


H73 Nero

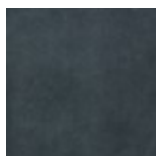
PELLI SCAMOSCIATE



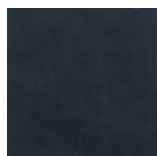
HA6 Neve



HA5
Marmotta

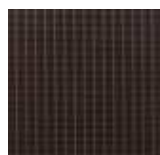


HA2 Nuvola

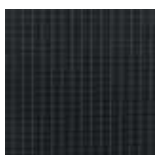


HA3 Blu

PELLI STAMPATE

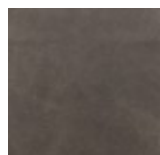


HV2
Marrone

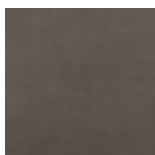


HV1 Nero

PELLI NABUCCATE



HN2
Carbone



HN3 Grigio

ECOPELLI LISCE



ECOPELLI LAVORATE



DIMENSIONI

Poltrona fissa

