

SUPERHELLA

MAURO LIPPARINI



*A chrome-plated metal structure is a nod to **Superhella's** stunning combination of the past and the future, a characteristic that makes it a perennial classic. There is a bold fluidity to the seat pad, which sits atop the*

sleek, metal base and is framed by slender armrests in black leather. In short, Superhella is a cosy refuge for you to recharge your batteries.

TYPE / ARMCHAIRS

TECHNICAL DESCRIPTION

Armchair with structure cold foamed polyurethane frame, structure in chromed metal, armrests in black thick leather. Seat covered in fabric, ecoleather or leather.



DESIGNER

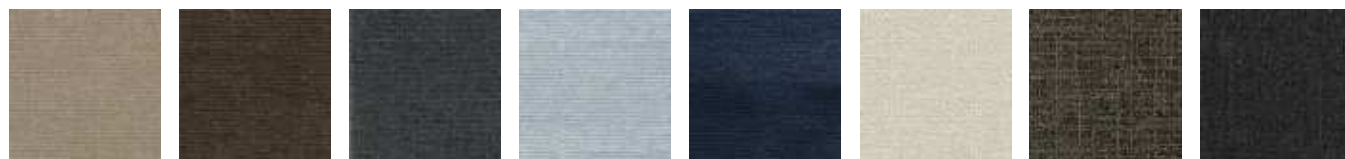
MAURO LIPPARINI

Mauro Lipparini earned a degree in Architecture in 1980 from Università degli Studi of Florence, where he also worked as a professor. He won the international design contests Young & Designer Milan (1987) and International Du Pont Award Köln (Germany, 1988 and 1989). Lipparini's intense activity in the field of industrial design covers office and home furniture, the textile industry and other products created for many companies in Europe and Japan. In architecture and interior design, Lipparini has concentrated mainly on private and public housing, on showrooms, retail sales outlets and exposition installations. Furthermore, Lipparini also designs and realizes advanced corporate identity image systems that range from graphics to editorial services to production. Lipparini's style is based on the essential shapes and the clear and decisive lines that are characteristic of natural minimalism. His creations are imbued with a joyful spirit and with an elating sense of aesthetic pleasure and creativity. Thanks to his free use of color, organic weave patterns and original visual ideas, Lipparini amplifies the palette of minimalism, conveying the spontaneity and power of this aesthetic style and projecting it towards a new era of great maturity and wellbeing.



COVER FINISHINGS

FABRICS



A_AS1 Saari A_AS2 Saari A_AS4 Saari A_AS5 Saari A_AS7 Saari B_CAE Cocò B_CAM Cocò B_CAK Cocò



B_CAF Cocò B_BC1 Burana B_BC3 Burana B_BC4 Burana B_BC6 Burana C_C10 Star C_C11 Star C_C17 Star



C_C16 Star C_C18 Star C_C15 Star D_D91 Panama D_D92 Panama D_D93 Panama D_D94 Panama D_D95 Panama



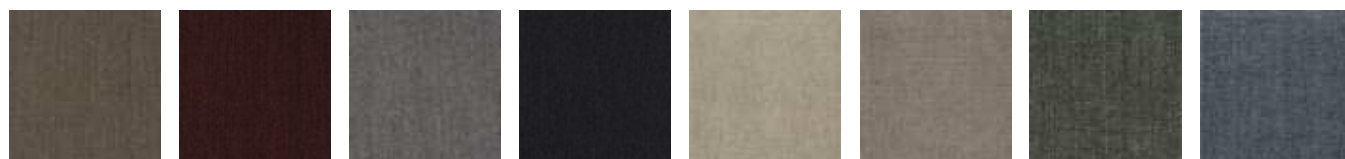
D_D98 Panama D_i71 Clou D_i74 Clou D_i79 Clou D_i72 Clou D_i78 Clou D_D01 Ubaye D_D03 Ubaye



D_D05 Ubaye E_E20 Mood E_E25 Mood E_E22 Mood E_E26 Mood E_E27 Mood E_E21 Mood E_E28 Mood



E_E51 Lido E_E52 Lido E_E54 Lido F_E50 Luxus F_F01 Luxus F_F02 Luxus F_F03 Luxus F_F05 Luxus



F_F11 Lama F_F14 Lama F_F12 Lama F_F15 Lama F_F25 Gaucho F_F21 Gaucho F_F23 Gaucho F_F24 Gaucho



F_F33
Velvet

F_F35
Velvet

F_F32
Velvet

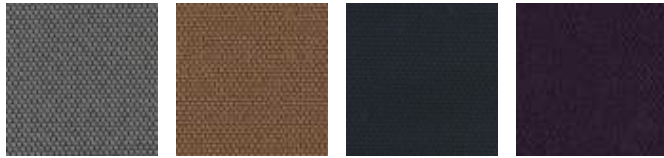
F_EM5
Velvet

H_H42 Sera

H_H44 Sera

H_H47 Sera

H_H48 Sera



H_H50
Opera

H_H53
Opera

H_H55
Opera

H_H56
Opera

SMOOTH LEATHERS



H30 Gesso

H38 Sand

H36
Camoscio

H32 Acacia

H31
Naturale

H37
Marmotta

H71 Testa di
Moro

H35 Grigio
Chiaro



H40 Blu
Notte

H73 Nero

NUBUCK



HN2
Carbone

HN3 Grigio

SMOOTH ECO-LEATHERS



C_CE1

C_CD3

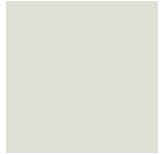
C_CF6

C_CD1

C_CD4

C_CD5

EMBOSSED ECO-LEATHERS



C_CE3



C_CE5



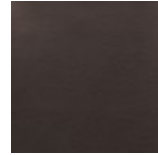
C_CL1



C_CL3



C_CL7



C_CL8



C_CL6

STRUCTURE FINISHINGS

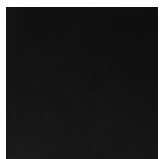
METALS



501 Cromo
naturale

ARMREST FINISHINGS

THICK LEATHER



K06 Nero

DIMENSIONS

Fixed armchair

