

Furniture Specification

Project: Tomassini Arredamenti Display

Item: Armchair
Qty: 1

Name: New York Bergère

Description: Armchair with metal structure, with external shell and front of the cushions covered in velvet and internal shell and back of the cushions covered in fabric.

Dimension: Cm.74x91x100h

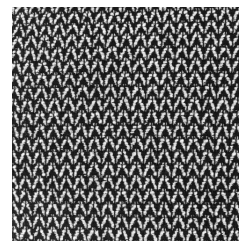
Finish: Structure in black nickel; covered in black velvet and black and white fabric with decorative pattern.

Manufacturer: Saba

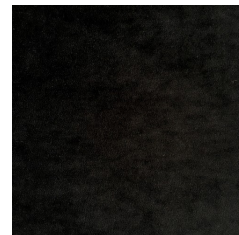
Additional specification: Fillings and coverings are in accordance with Italian regulations. Any fireproofing or other treatment required by law in other countries must be requested upon ordering and is the responsibility of the final customer.

Sample / Image Reference *(Main Picture is indicative)*

Note:



Black and white fabric
With decorative pattern



Black velvet



Black nickel

