

HORM.IT

Sudoku Nerobianco & Sudoku

HORM.IT

Librerie e mensole / Bookcases and wall shelves

SUDOKU NEROBIANCO— & SUDOKU

Mario Bellini, 2007

Sudoku is a puzzle of unequal elements that create a unique space when horizontally and vertically assembled. Its sides, easily coupled without overlap, allow for the creation of continuous walls by simply adding more modules. In the aluminium and black and white wood version, the reflective and striped surfaces play on the empty and full spaces to create a striking visual effect.

HORM.IT

Sudoku Nerobianco & Sudoku

HORM.IT

Librerie e mensole / Bookcases and wall shelves

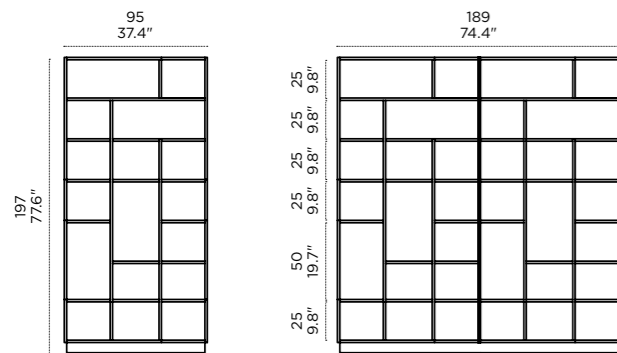


SUDOKU — Sudoku è un enigma compositivo di elementi irregolari che, assemblati orizzontalmente e verticalmente, creano un volume di grande originalità. Grazie ai fianchi accostabili senza raddoppio con più moduli si può creare un sistema a parete continuo. Nella versione in alluminio e legno nerobianco, le superfici specchianti e zebbrate della libreria creano un gioco di pieni e di vuoti dal sorprendente effetto scenografico.

SUDOKU — Sudoku est une énigme composée d'éléments inégaux qui, assemblés horizontalement et verticalement, créent un volume très original. Grâce aux panneaux latéraux qui s'encastrent sans créer de double cloison, un système mural continu peut être conçu avec plusieurs modules. Dans la version en aluminium et en bois noir et blanc, les surfaces en miroirs et zébrées créent un jeu de pleins et de vides dans une mise en scène surprenante.

SUDOKU — Sudoku ist ein Puzzle aus ungleichen Elementen, die horizontal und vertikal montiert werden, wodurch ein Volumen von großer Originalität entsteht. Da die offenen Seiten einfach verbunden werden können, kann mit mehreren Modulen eine durchgehende Wand geschaffen werden, ohne dass Dopplungen entstehen.

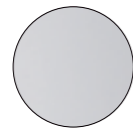
Misure e finiture / Sizes and finishes



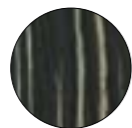
Profondità/Depth = 26 cm/10.2"

Le spalle, di mezza profondità rispetto alle mensole, permettono di accostare più moduli senza raddoppiare lo spessore dei fianchi/The sides, whose depth is half that of the shelves, allow to connect several modules without doubling the thickness
Download high resolution photographs of this product from www.photos.horm.it

Sudoku
Nerobianco

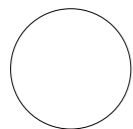


alluminio
aluminium

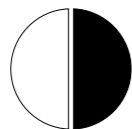


legno nerobianco
blackwhite wood

Sudoku

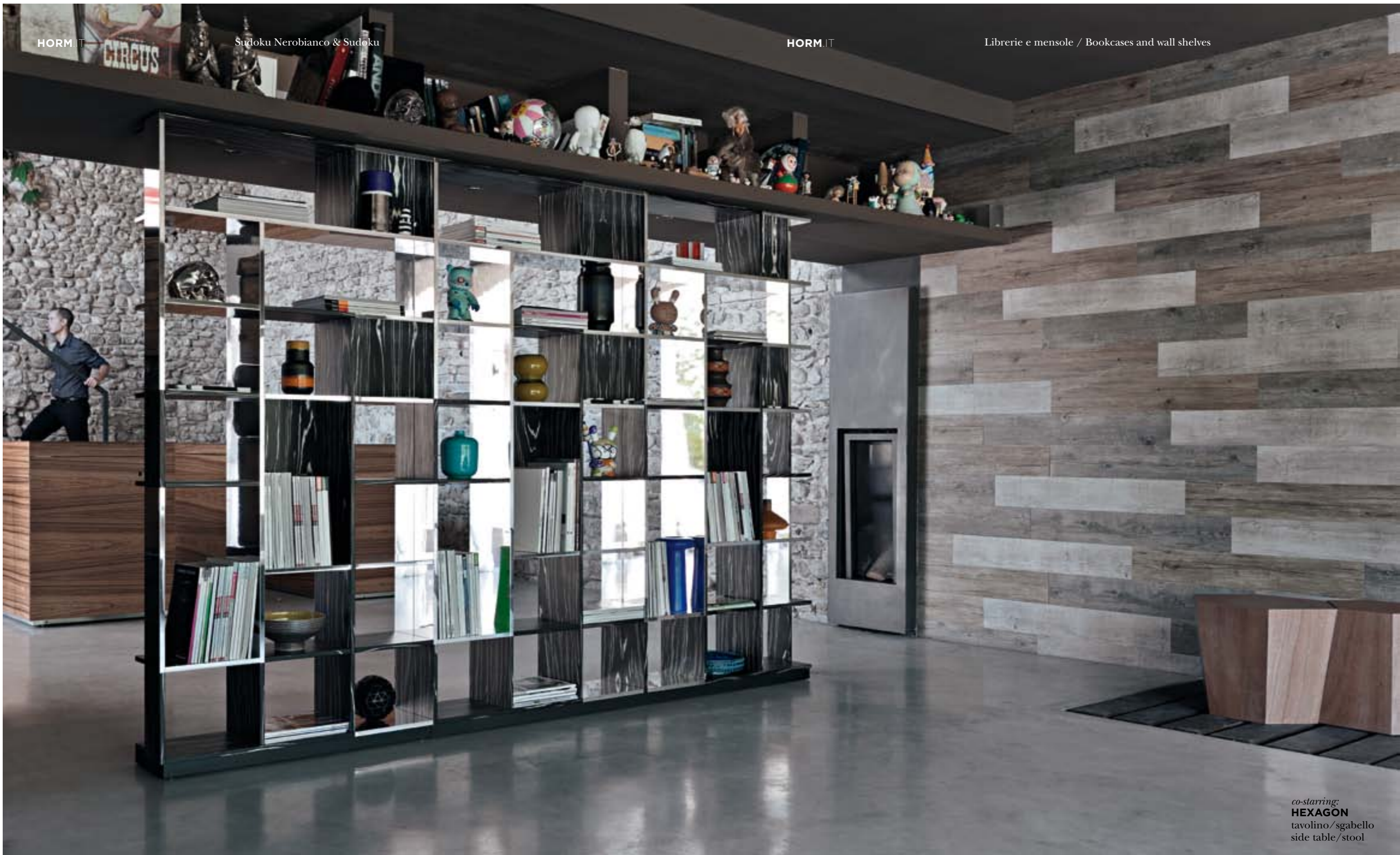


laccato bianco
white lacquer



laccato bianco e nero
black and white lacquer





co-starring:
HEXAGON
tavolino/sgabello
side table/stool

HORM.IT

The Sequel

HORM.IT

The Industrial Loft



SUDOKU FULL WHITE
Libreria / Bookshelf

LEON ON THE BASE
Madia / Sideboard

AUTOREGGENTE
Tavolo / Table

STACK
Sedia / Chair

DOPPIA LUCE TOTEM
Art Lamp

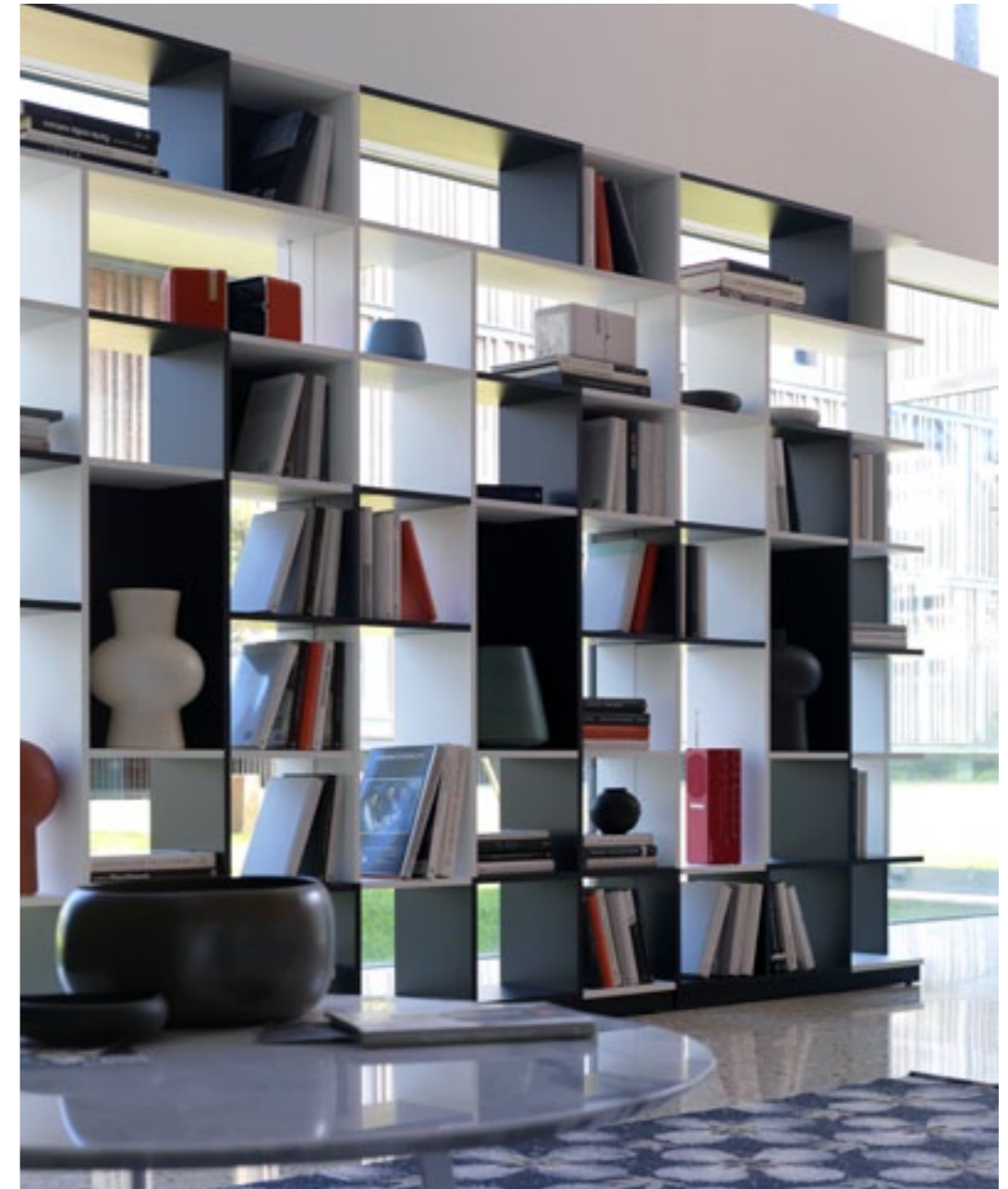
HORM.IT

The Sequel

HORM.IT

The Penthouse





MILOS
Poltrona / Armchair

HEXAGON
Sgabello_Tavolino / Stool_Side Table

SUDOKU
Libreria / Bookshelf