

# NICE

FERRUCCIO LAVIANI



Nice. An upholstered bed is chosen for its softness, comfort and shape. The project was developed with these fixed points in mind. An inviting curved headboard that gives support while reading a book or soft and comfy when resting, which becomes part of the structure which is also padded both in the longitudinal bands and in the supports with great tailored details. Cold-sprayed polyurethane foam structure upholstered in fabric of leather with removable cover.

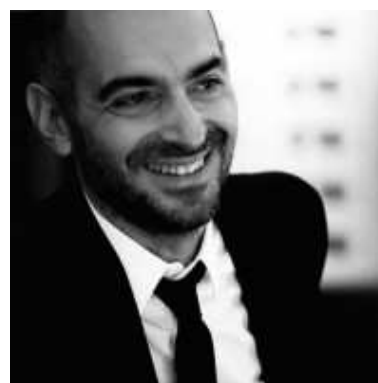
TYPE / BEDS



## DESIGNER

FERRUCCIO LAVIANI

Born in Cremona in 1960 Laviani attends the Istituto Professionale Internazionale per l'Artigianato Liutario e del Legno di Cremona, receiving his degree in 1978. He later attends the Faculty of Architecture, at the Politecnico di Milano where he graduates in 1986, while attending at the same time the Scuola Politecnica di Design in Milan from 1982 to 1984. In 1983 he starts working for Michele De Lucchi; he becomes a partner in 1986 and works there until 1991, when he decides to open his own studio in Milan. Laviani's work mainly focuses on product design, interior design, art direction and graphic. Since 1991, he is the Art Director for Kartell; same role he has played for other companies. He designs retail spaces and set-ups, offices and houses for private clients, as well as for furniture and fashion. In 2008 an exhibition was dedicated to the lamps he designed for Kartell. Bourgie and Take lamps for Kartell are part of the permanent Collection of IMA, *Indianapolis Museum of Art (USA)*; also other products have been featured in museums and shows all over the world. In 2015, Laviani develops the new concept for Kartell Museum in Noviglio, updating the interior design he had conceived in 1999, when he received the award Premio Guggenheim Impresa & Cultura 2000, as the best museum of a company. Last year, he has started a collaboration with the Italian mosaic brand Bisazza. In 2016 Ferruccio has designed the pop-up store for the fashion designer Paula Cademartori and the set-up for the Haute Couture Women show for Dolce e Gabbana, at Laboratori Ansaldo, Teatro alla Scala, Milan.



# HEADBOARD FRONT FINISHINGS

## FABRICS



A\_AS1 Saari



A\_AS2 Saari



A\_AS4 Saari



A\_AS5 Saari



A\_AS7 Saari



B\_CAE Cocò



B\_CAM  
Cocò



B\_CAK Cocò



B\_CAF Cocò



B\_BC1  
Burana



B\_BC3  
Burana



B\_BC4  
Burana



B\_BC6  
Burana



C\_C10 Star



C\_C11 Star



C\_C17 Star



C\_C16 Star



C\_C18 Star



C\_C15 Star



D\_D91  
Panama



D\_D92  
Panama



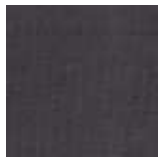
D\_D93  
Panama



D\_D94  
Panama



D\_D95  
Panama



D\_D98  
Panama



D\_i71 Clou



D\_i74 Clou



D\_i79 Clou



D\_i72 Clou



D\_i78 Clou



D\_D01  
Ubaye



D\_D03  
Ubaye



D\_D05  
Ubaye



E\_E20 Mood



E\_E25 Mood



E\_E22 Mood



E\_E26 Mood



E\_E27 Mood



E\_E21 Mood



E\_E28 Mood



E\_E51 Lido



E\_E52 Lido



E\_E54 Lido



F\_F50 Luxus



F\_F01 Luxus



F\_F02 Luxus



F\_F03 Luxus



F\_F05 Luxus



F\_F11 Lama



F\_F14 Lama



F\_F12 Lama



F\_F15 Lama



F\_F25  
Gaucho



F\_F21  
Gaucho



F\_F23  
Gaucho



F\_F24  
Gaucho



F\_F33  
Velvet

F\_F35  
Velvet

F\_F32  
Velvet

F\_EM5  
Velvet

H\_H42 Sera

H\_H44 Sera

H\_H47 Sera

H\_H48 Sera



H\_H50  
Opera

H\_H53  
Opera

H\_H55  
Opera

H\_H56  
Opera

## SMOOTH LEATHERS



H30 Gesso

H38 Sand

H36  
Camoscio

H32 Acacia

H31  
Naturale

H37  
Marmotta

H71 Testa di  
Moro

H35 Grigio  
Chiaro



H40 Blu  
Notte

H73 Nero

## NUBUCK



HN2  
Carbone

HN3 Grigio

## SMOOTH ECO-LEATHERS



C\_CE1

C\_CD3

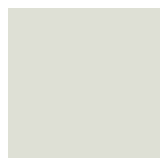
C\_CF6

C\_CD1

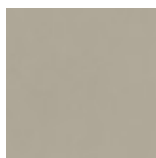
C\_CD4

C\_CD5

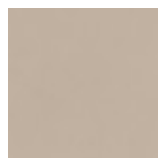
EMBOSSSED ECO-LEATHERS



C\_CE3



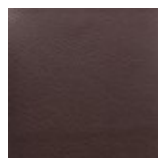
C\_CE5



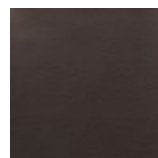
C\_CL1



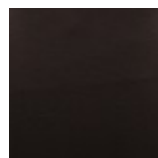
C\_CL3



C\_CL7



C\_CL8



C\_CL6

# BEDFRAME / HEADBOARD BACK FINISHINGS

## FABRICS



A\_AS1 Saari



A\_AS2 Saari



A\_AS4 Saari



A\_AS5 Saari



A\_AS7 Saari



B\_CAE Cocò



B\_CAM  
Cocò



B\_CAK Cocò



B\_CAF Cocò



B\_BC1  
Burana



B\_BC3  
Burana



B\_BC4  
Burana



B\_BC6  
Burana



C\_C10 Star



C\_C11 Star



C\_C17 Star



C\_C16 Star



C\_C18 Star



C\_C15 Star



D\_D91  
Panama



D\_D92  
Panama



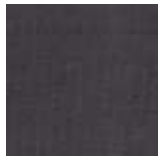
D\_D93  
Panama



D\_D94  
Panama



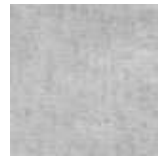
D\_D95  
Panama



D\_D98  
Panama



D\_i71 Clou



D\_i74 Clou



D\_i79 Clou



D\_i72 Clou



D\_i78 Clou



D\_D01  
Ubaye



D\_D03  
Ubaye



D\_D05  
Ubaye



E\_E20 Mood



E\_E25 Mood



E\_E22 Mood



E\_E26 Mood



E\_E27 Mood



E\_E21 Mood



E\_E28 Mood



E\_E51 Lido



E\_E52 Lido



E\_E54 Lido



F\_E50 Luxus



F\_F01 Luxus



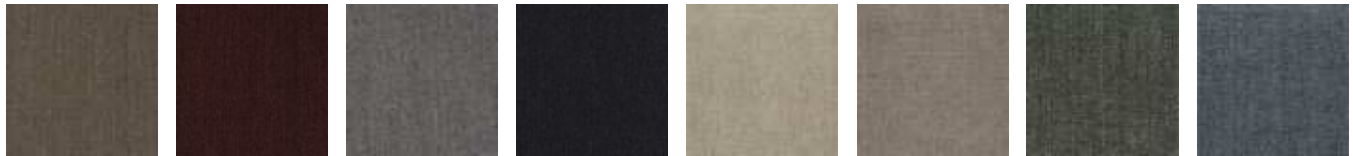
F\_F02 Luxus



F\_F03 Luxus



F\_F05 Luxus



F\_F11 Lama

F\_F14 Lama

F\_F12 Lama

F\_F15 Lama

F\_F25  
Gaucho

F\_F21  
Gaucho

F\_F23  
Gaucho

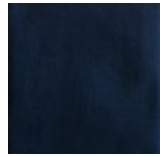
F\_F24  
Gaucho



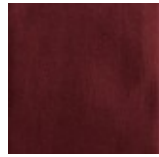
F\_F33  
Velvet



F\_F35  
Velvet



F\_F32  
Velvet



F\_EM5  
Velvet



H\_H42 Sera



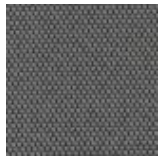
H\_H44 Sera



H\_H47 Sera



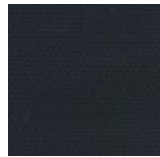
H\_H48 Sera



H\_H50  
Opera



H\_H53  
Opera

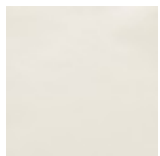


H\_H55  
Opera



H\_H56  
Opera

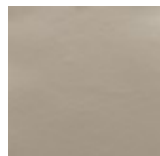
## SMOOTH LEATHERS



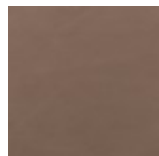
H30 Gesso



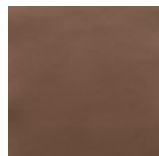
H38 Sand



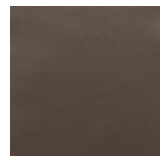
H36  
Camoscio



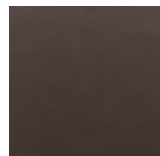
H32 Acacia



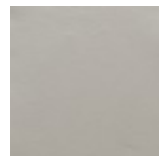
H31  
Naturale



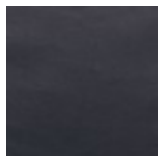
H37  
Marmotta



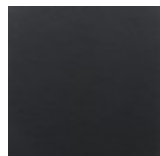
H71 Testa di  
Moro



H35 Grigio  
Chiaro



H40 Blu  
Notte

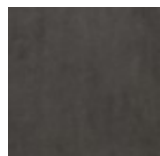


H73 Nero

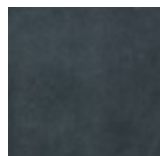
## SUEDE LEATHERS



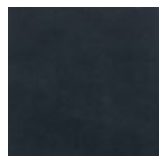
HA6 Neve



HA5  
Marmotta



HA2 Nuvola



HA3 Blu

## NUBUCK

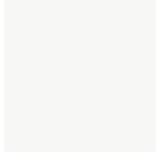


HN2  
Carbone



HN3 Grigio

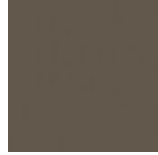
## SMOOTH ECO-LEATHERS



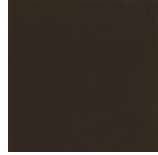
C\_CE1



C\_CD3



C\_CF6



C\_CD1

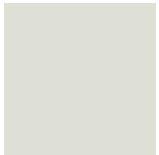


C\_CD4



C\_CD5

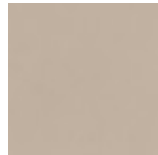
## EMBOSSED ECO-LEATHERS



C\_CE3



C\_CE5



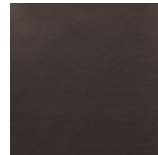
C\_CL1



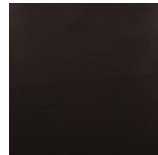
C\_CL3



C\_CL7



C\_CL8



C\_CL6