

---

# Spectrum

---

*Studiopepe*  
2021

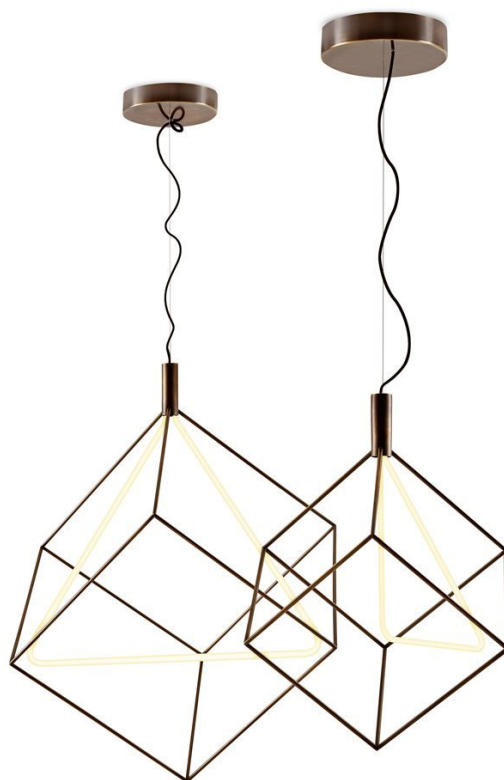
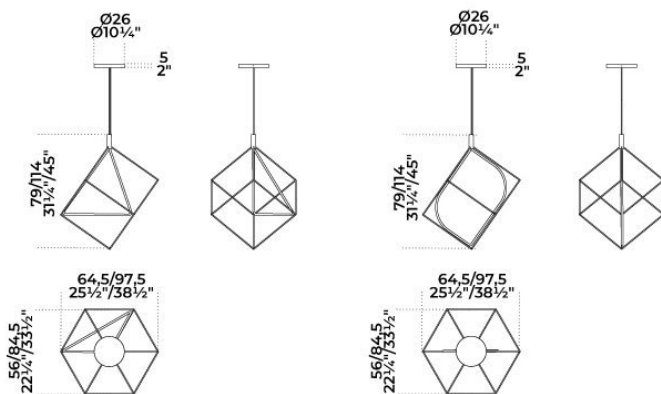


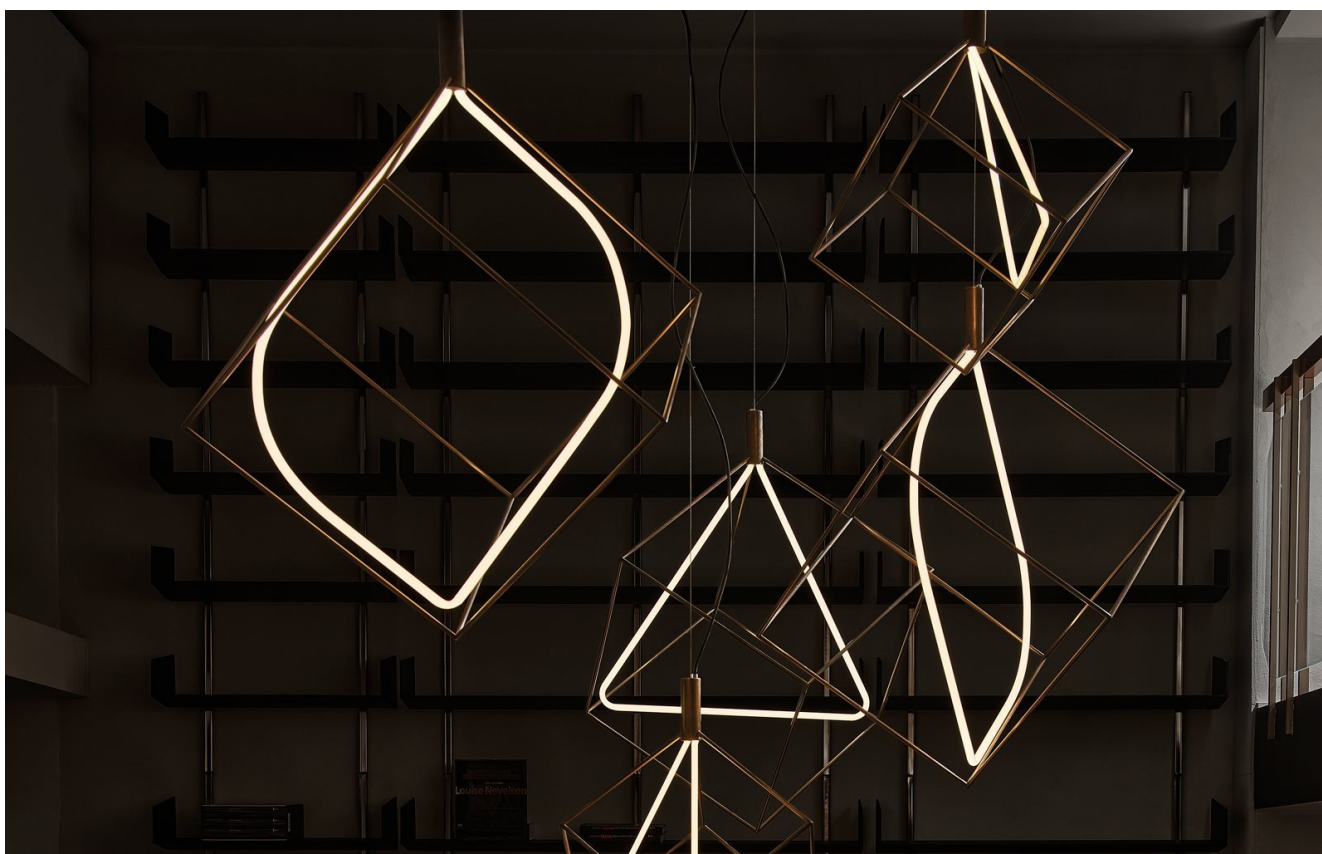
Lampada a sospensione a luce NEON (dimmerabile). Fonte luminosa in Neon curvato a caldo. Struttura in ottone brunito a mano, che risulta naturalmente macchiata e disomogenea. Questa lavorazione artigianale conferisce ad ogni pezzo una particolare unicità, rendendolo esclusivo. In dotazione cavo da 4mt. Disponibile in due dimensioni e due diverse configurazioni del NEON.

Hanging lamp with NEON light (dimnable). Light source in hot-bent NEON. Hand burnished brass structure. This finish looks naturally spotted and irregular. Due to this craftmade processing, each product is unique and exclusive. Supplied with cable 4 meters long. Available in two dimensions and two different configurations of the NEON.

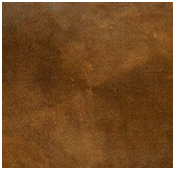
Dimensioni / Sizes  
Cm (L x P x H)  
Versione A  
64,5 x 56 x 79  
97,5 x 84,5 x 114

Versione B  
64,5 x 56 x 79  
97,5 x 84,5 x 114





*Metallo / Metal*



*Ottone brunito  
a mano  
Hand  
burnished  
brass*

---