

# PHOENIX

MAURO LIPPARINI



Conquistare la zona living con eterea eleganza, rigore e purezza, design contemporaneo e funzionalità. Accade con **Phoenix**, il nuovo sistema divano dalle linee essenziali ma dalle molteplici possibilità compositive. Sia se scelto nella sua versione fissa o in quella componibile – comprendente dormeuse, pouf e chaise longue – i suoi volumi avvolgenti si configurano come i perfetti interpreti di una filosofia improntata al relax.

## TIPOLOGIA / DIVANI

### CARATTERISTICHE TECNICHE

*Phoenix è un sistema divano dalle molteplici combinazioni compositive caratterizzato da braccioli a incastro terminali e centrali inseribili nei moduli, che non prevedono il bracciolo alto strutturale; sono fissati al basamento dell'elemento sagomando le cuscinature di seduta per alloggiarli integralmente. Disponibile in versione fissa e componibile, comprende elementi centrali senza bracciolo, elementi ad angolo e terminali, dormeuse, pouf e chaise longue. Tutti gli elementi, completamente sfoderabili, disponibili nelle molteplici larghezze e in due profondità 970/1200mm., sono liberamente abbinabili tra loro. Il progetto comprende elementi asimmetrici dormeuse utilizzabili singolarmente oppure integrabili nel sistema divano, rendendo estremamente personalizzabile la progettazione. Le cuscinature sono sfoderabili. Il cuscino di seduta è in poliuretano espanso sagomato a quote differenziate e ricoperto in fibra di poliestere. Il cuscino schienale è in fibra di poliestere e piuma sterilizzata, entrambi in fodera di cotone.*



## DESIGNER

MAURO LIPPARINI

**Mauro Lipparini** ha conseguito la Laurea in Architettura nel 1980 presso l'Università degli Studi di Firenze, della quale è stato professore. Lipparini ha vinto i concorsi internazionali di design Young & Designer Milano (1987) e International Du Pont Award Köln (Germania, 1988 e 1989). L'intensa attività di Lipparini nel campo del design industriale include il mobile per la casa e per l'ufficio, l'industria tessile e altri prodotti creati per numerose aziende in Europa e in Giappone. Nell'ambito dell'architettura e dell'interior design, Lipparini si è principalmente concentrato sull'abitazione privata e pubblica, sugli showroom e i locali di vendita al dettaglio, e sulle installazioni espositive. Inoltre Lipparini progetta e realizza avanzati sistemi di immagine di corporate identity, dalla grafica ai servizi editoriali, alla produzione. Lo stile di Lipparini, basato sulle forme essenziali e le linee chiare ed energiche caratteristiche del minimalismo naturale, è imbevuto d'uno spirito gioioso, di un esaltante senso di piacere estetico e della creatività. Nel suo libero impiego di colori, trame organiche, originali idee visive, Lipparini amplifica la tavolozza del minimalismo, incanalando l'immediatezza e la potenza di quest'estetica verso una nuova era di grande maturità e senso di benessere.

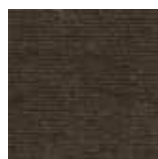


# FINITURE RIVESTIMENTO

## TESSUTI



A\_AS1 Saari



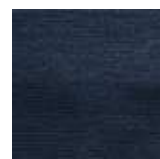
A\_AS2 Saari



A\_AS4 Saari



A\_AS5 Saari



A\_AS7 Saari



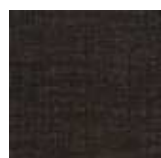
B\_CAE Cocò



B\_CAM  
Cocò



B\_CAK Cocò



B\_CAF Cocò



B\_BC1  
Burana



B\_BC3  
Burana



B\_BC4  
Burana



B\_BC6  
Burana



C\_C10 Star



C\_C11 Star



C\_C17 Star



C\_C16 Star



C\_C18 Star



C\_C15 Star



D\_D91  
Panama



D\_D92  
Panama



D\_D93  
Panama



D\_D94  
Panama



D\_D95  
Panama



D\_D98  
Panama



D\_i71 Clou



D\_i74 Clou



D\_i79 Clou



D\_i72 Clou



D\_i78 Clou



D\_D01  
Ubaye



D\_D03  
Ubaye



D\_D05  
Ubaye



E\_E20 Mood



E\_E25 Mood



E\_E22 Mood



E\_E26 Mood



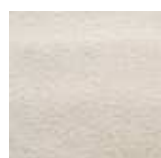
E\_E27 Mood



E\_E21 Mood



E\_E28 Mood



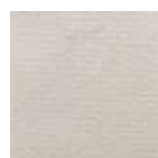
E\_E51 Lido



E\_E52 Lido



E\_E54 Lido



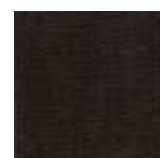
F\_F50 Luxus



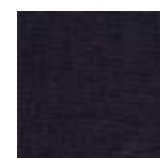
F\_F01 Luxus



F\_F02 Luxus



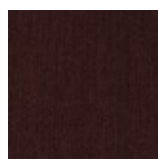
F\_F03 Luxus



F\_F05 Luxus



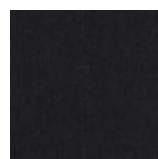
F\_F11 Lama



F\_F14 Lama



F\_F12 Lama



F\_F15 Lama



F\_F25  
Gaucho



F\_F21  
Gaucho



F\_F23  
Gaucho



F\_F24  
Gaucho



F\_F33  
Velvet

F\_F35  
Velvet

F\_F32  
Velvet

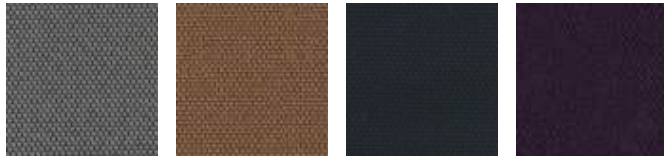
F\_EM5  
Velvet

H\_H42 Sera

H\_H44 Sera

H\_H47 Sera

H\_H48 Sera



H\_H50  
Opera

H\_H53  
Opera

H\_H55  
Opera

H\_H56  
Opera

## PELLI LISCE



H30 Gesso

H38 Sand

H36  
Camoscio

H32 Acacia

H31  
Naturale

H37  
Marmotta

H71 Testa di  
Moro

H35 Grigio  
Chiaro



H40 Blu  
Notte

H73 Nero

## PELLI NABUCCATE



HN2  
Carbone

HN3 Grigio

## ECOPELLI LISCE



C\_CE1

C\_CD3

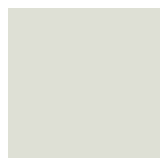
C\_CF6

C\_CD1

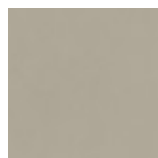
C\_CD4

C\_CD5

ECOPELLI LAVORATE



C\_CE3



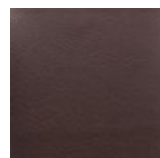
C\_CE5



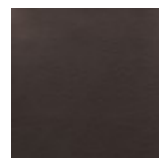
C\_CL1



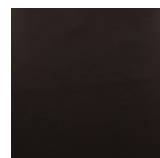
C\_CL3



C\_CL7



C\_CL8



C\_CL6

# FINITURE PIEDINI

## METALLI



524

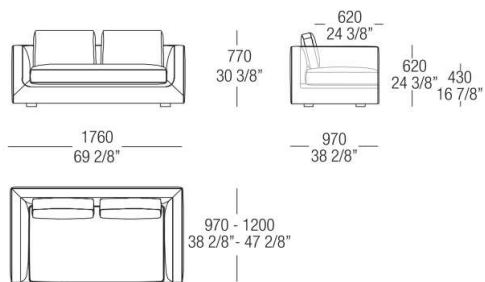
Verniciato

Canna di

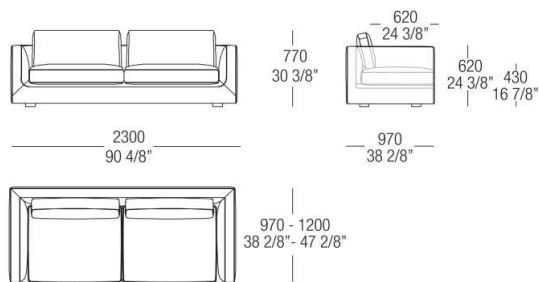
fucile

# DIMENSIONI

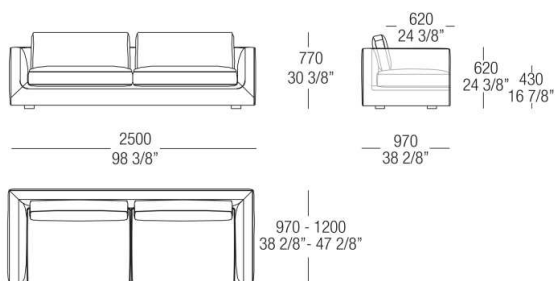
Divano fisso



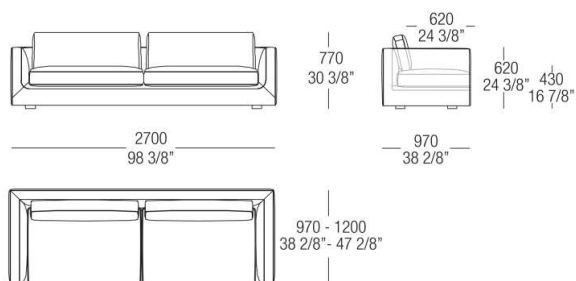
Divano fisso



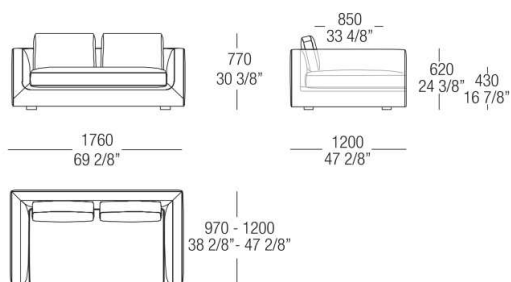
Divano fisso



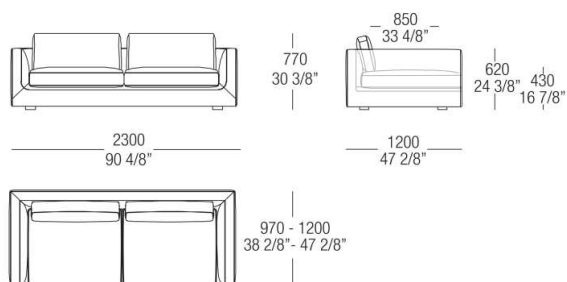
Divano fisso



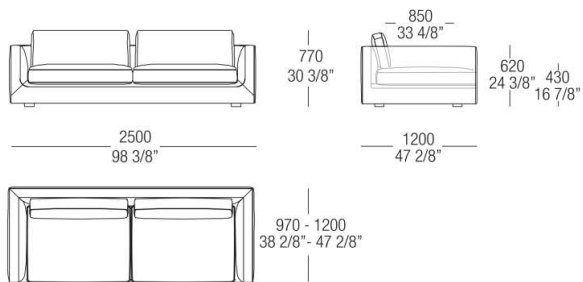
Divano fisso



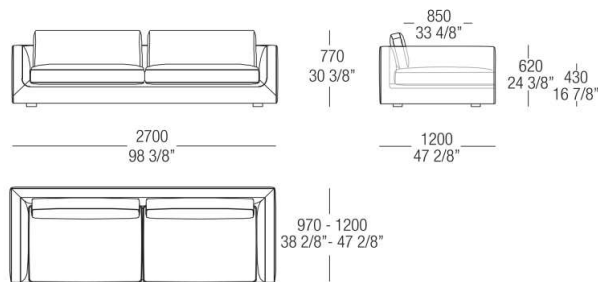
Divano fisso



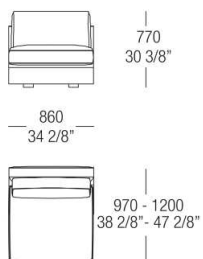
Divano fisso



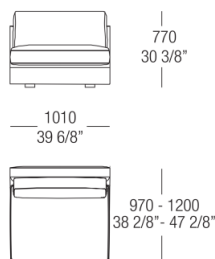
Divano fisso



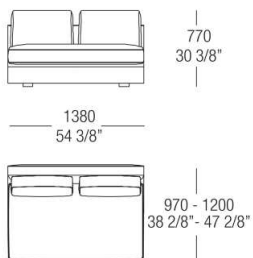
Elemento centrale con schienale



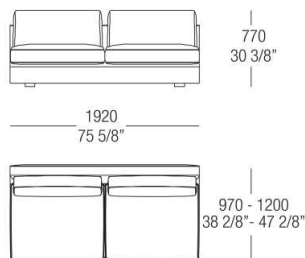
Elemento centrale con schienale



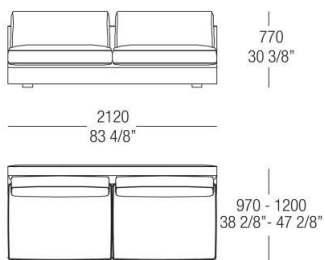
Elemento centrale con schienali



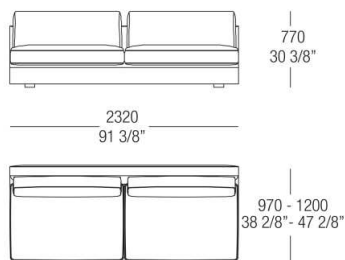
Elemento centrale con schienali



Elemento centrale con schienali

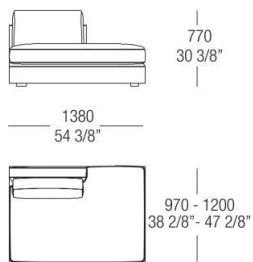


Elemento centrale con schienali

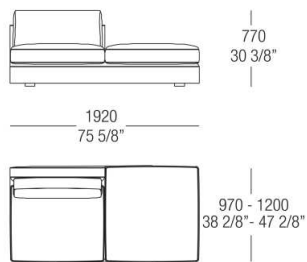




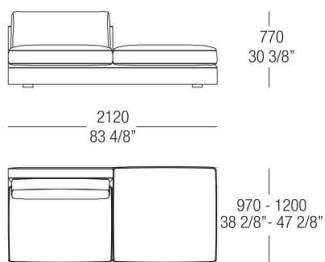
Elemento centrale con schienale sx o dx



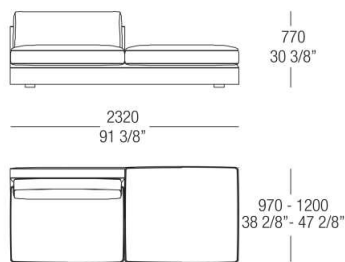
Elemento centrale con schienale sx o dx



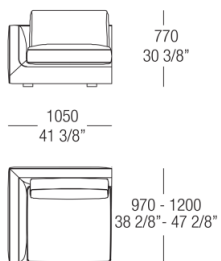
Elemento centrale con schienale sx o dx



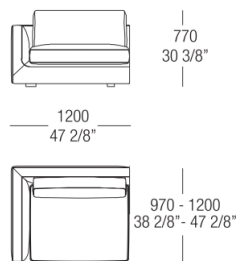
Elemento centrale con schienale sx o dx



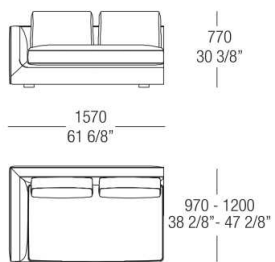
Elemento terminale sx o dx



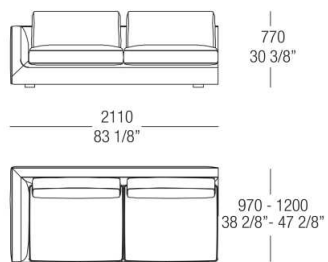
Elemento terminale sx o dx



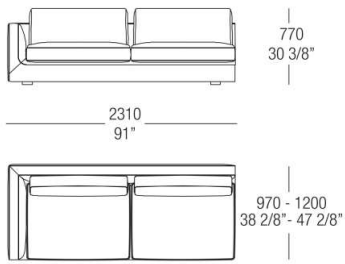
Elemento terminale sx o dx



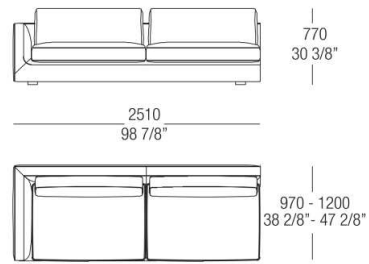
Elemento terminale sx o dx



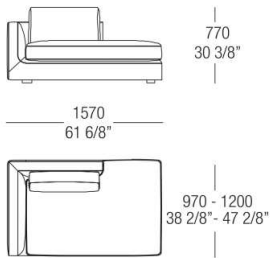
Elemento terminale sx o dx



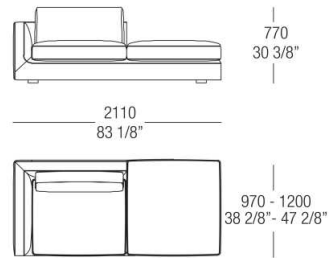
Elemento terminale sx o dx



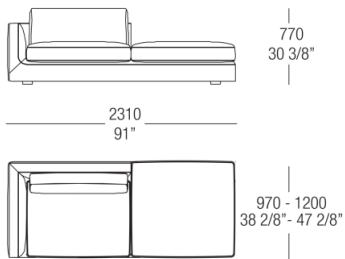
Elemento terminale con schienale sx o dx



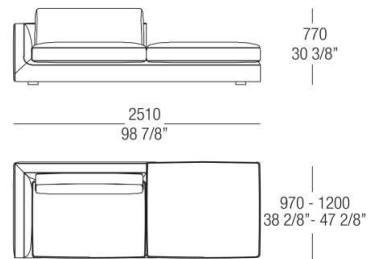
Elemento terminale con schienale sx o dx



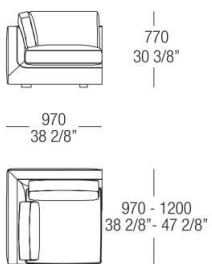
Elemento terminale con schienale sx o dx



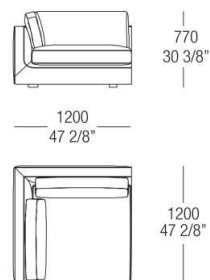
Elemento terminale con schienale sx o dx



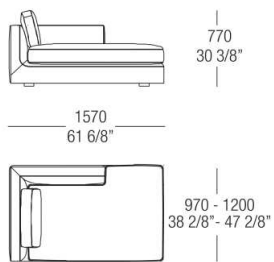
Elemento angolare sx o dx



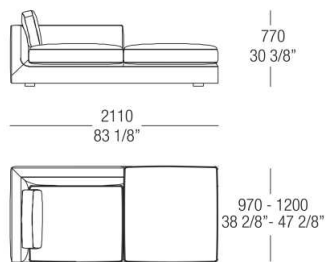
Elemento angolare sx o dx



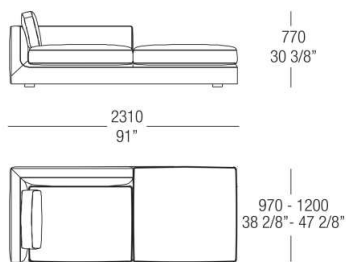
Dormeuse con bracciolo e schienale sx o dx



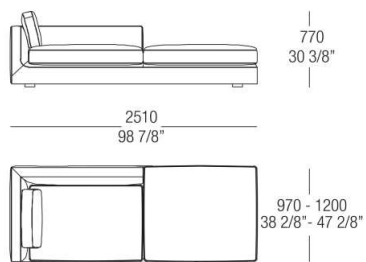
Dormeuse con bracciolo e schienale sx o dx



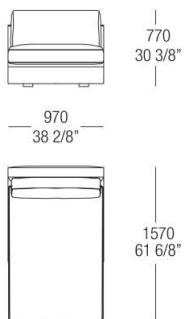
Dormeuse con bracciolo e schienale sx o dx



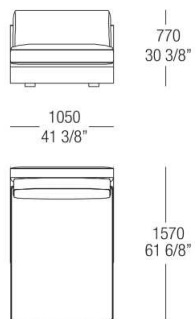
Dormeuse con bracciolo e schienale sx o dx



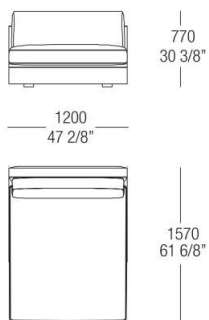
Chaise longue senza bracciolo



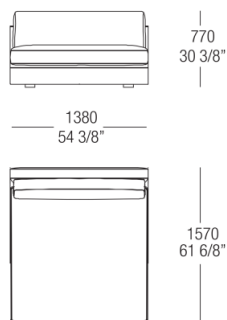
Chaise longue senza bracciolo



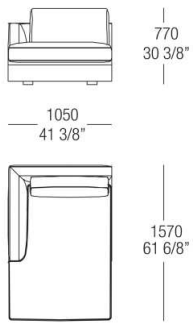
Chaise longue senza bracciolo



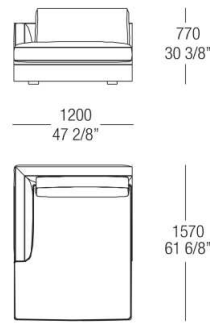
Chaise longue senza bracciolo



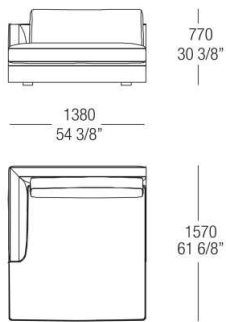
Chaise longue con bracciolo sx o dx



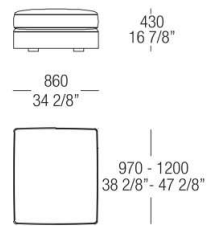
Chaise longue con bracciolo sx o dx



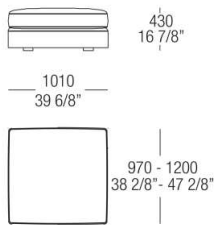
Chaise longue con bracciolo sx o dx



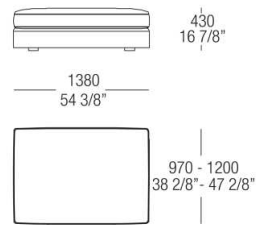
Pouf senza cuciture



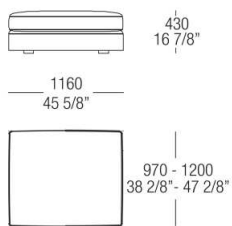
Pouf senza cuciture



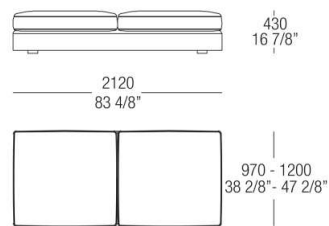
Pouf senza cuciture



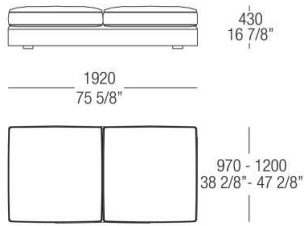
Pouf senza cuciture



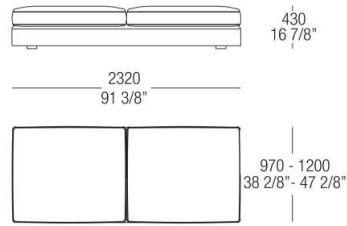
Pouf senza cuciture



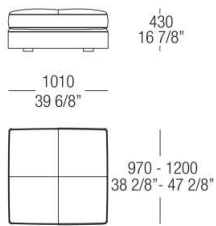
Pouf senza cuciture



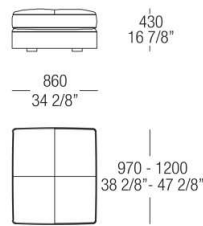
Pouf senza cuciture



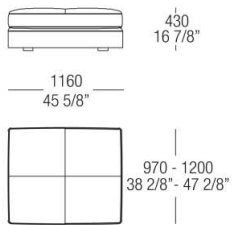
Pouf con cuciture



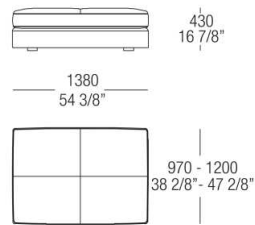
Pouf con cuciture



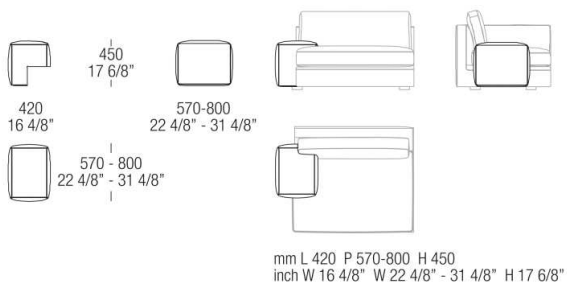
Pouf con cuciture



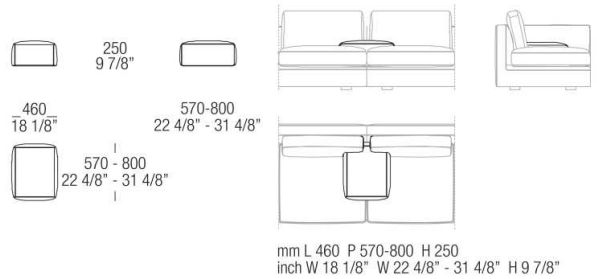
Pouf con cuciture



Bracciolo terminale basso



Bracciolo centrale ad incasso



## Cuscino bracciolo



600  
23 5/8"

sp.50  
th.2"