

ORCHESTRA SYSTEM

“Orchestra System” Collection design Bartoli Design

The Orchestra collection is a matching system to create many configurations in size, aesthetics and ergonomics. Two armrest sizes, two backrest heights, three wooden base models, two metal foot models, ten kinds of decorative cushions.

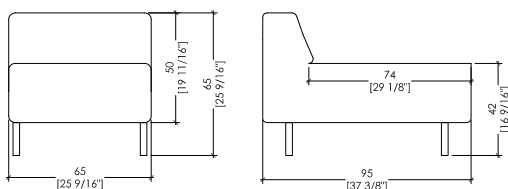


BEDIF
FEREN
TBEUN
IQUE

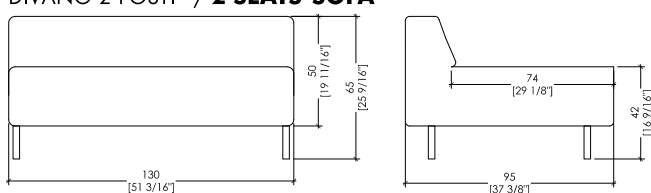
ORCHESTRA SYSTEM

“Orchestra System” Collection design Bartoli Design

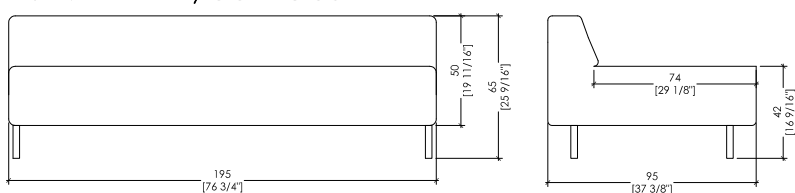
DIVANO 1 POSTO / 1 SEAT SOFA



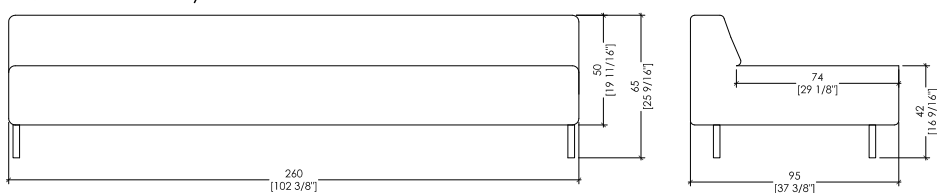
DIVANO 2 POSTI / 2 SEATS SOFA



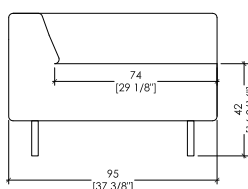
DIVANO 3 POSTI / 3 SEATS SOFA



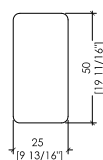
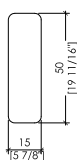
DIVANO 4 POSTI / 4 SEATS SOFA



ANGOLO / CORNER



BRACCIOLO 15 CM / ARM 15 CM BRACCIOLO 25 CM / ARM 25 CM



BEDIF
FEREN
TBEUN
IQUE