

NORMA

MAURO LIPPARINI



With its delicate lines and curvy design, **Norma** is the perfect place for relaxation. Yet simplicity doesn't mean the sofa compromises on practicality: two additional elements with armrests can be added to make the whole thing longer.

TYPE / SOFAS

TECHNICAL DESCRIPTION

Collection includes linear sofas with fixed shapes in 3 different widths and an element with 1 armrest to form a linear sofa of W. 2900mm (114 1/8"), mono-shell in wood, padded in multi-density polyurethane foam with cover in Dacron fibre, seat suspension system with elastic

bands fastened to the wood shell, covering in fabric or leather with double stitching. Covering removable by expert personnel.



DESIGNER

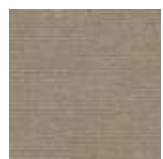
MAURO LIPPARINI

Mauro Lipparini earned a degree in Architecture in 1980 from Università degli Studi of Florence, where he also worked as a professor. He won the international design contests Young & Designer Milan (1987) and International Du Pont Award Köln (Germany, 1988 and 1989). Lipparini's intense activity in the field of industrial design covers office and home furniture, the textile industry and other products created for many companies in Europe and Japan. In architecture and interior design, Lipparini has concentrated mainly on private and public housing, on showrooms, retail sales outlets and exposition installations. Furthermore, Lipparini also designs and realizes advanced corporate identity image systems that range from graphics to editorial services to production. Lipparini's style is based on the essential shapes and the clear and decisive lines that are characteristic of natural minimalism. His creations are imbued with a joyful spirit and with an elating sense of aesthetic pleasure and creativity. Thanks to his free use of color, organic weave patterns and original visual ideas, Lipparini amplifies the palette of minimalism, conveying the spontaneity and power of this aesthetic style and projecting it towards a new era of great maturity and wellbeing.



COVER FINISHINGS

FABRICS



A_AS1 Saari



A_AS2 Saari



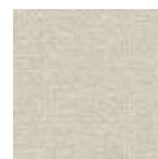
A_AS4 Saari



A_AS5 Saari



A_AS7 Saari



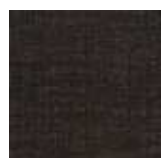
B_CAE Cocò



B_CAM
Cocò



B_CAK Cocò



B_CAF Cocò



B_BC1
Burana



B_BC3
Burana



B_BC4
Burana



B_BC6
Burana



C_C10 Star



C_C11 Star



C_C17 Star



C_C16 Star



C_C18 Star



C_C15 Star



D_D91
Panama



D_D92
Panama



D_D93
Panama



D_D94
Panama



D_D95
Panama



D_D98
Panama



D_i71 Clou



D_i74 Clou



D_i79 Clou



D_i72 Clou



D_i78 Clou



D_D01
Ubaye



D_D03
Ubaye



D_D05
Ubaye



E_E20 Mood



E_E25 Mood



E_E22 Mood



E_E26 Mood



E_E27 Mood



E_E21 Mood



E_E28 Mood



E_E51 Lido



E_E52 Lido



E_E54 Lido



F_F50 Luxus



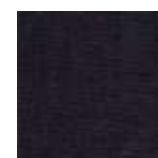
F_F01 Luxus



F_F02 Luxus



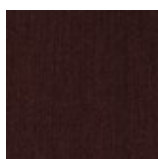
F_F03 Luxus



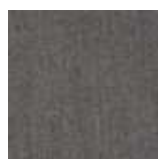
F_F05 Luxus



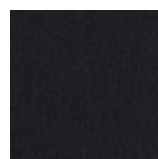
F_F11 Lama



F_F14 Lama



F_F12 Lama



F_F15 Lama



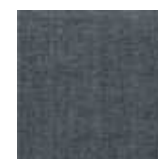
F_F25
Gaucho



F_F21
Gaucho



F_F23
Gaucho



F_F24
Gaucho



F_F33
Velvet

F_F35
Velvet

F_F32
Velvet

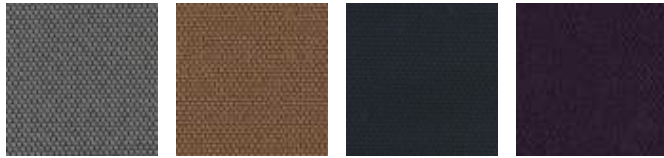
F_EM5
Velvet

H_H42 Sera

H_H44 Sera

H_H47 Sera

H_H48 Sera



H_H50
Opera

H_H53
Opera

H_H55
Opera

H_H56
Opera

SMOOTH LEATHERS



H30 Gesso

H38 Sand

H36
Camoscio

H32 Acacia

H31
Naturale

H37
Marmotta

H71 Testa di
Moro

H35 Grigio
Chiaro



H40 Blu
Notte

H73 Nero

NUBUCK



HN2
Carbone

HN3 Grigio

SMOOTH ECO-LEATHERS



C_CE1

C_CD3

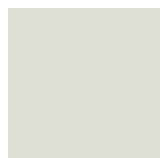
C_CF6

C_CD1

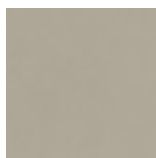
C_CD4

C_CD5

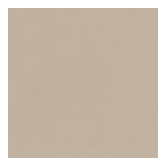
EMBOSSSED ECO-LEATHERS



C_CE3



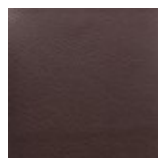
C_CE5



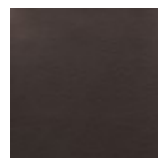
C_CL1



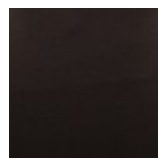
C_CL3



C_CL7



C_CL8



C_CL6

FEET FINISHINGS

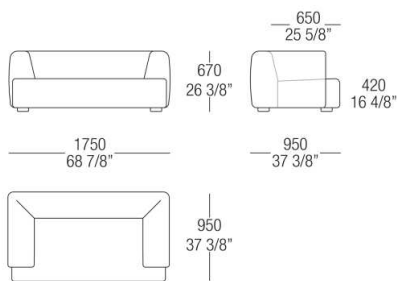
METALS



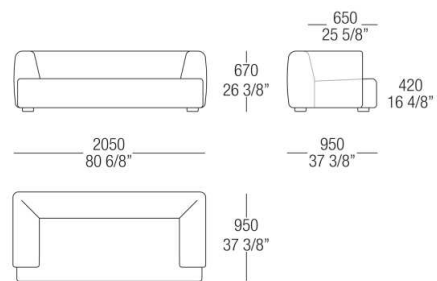
538
Verniciato
Nero

DIMENSIONS

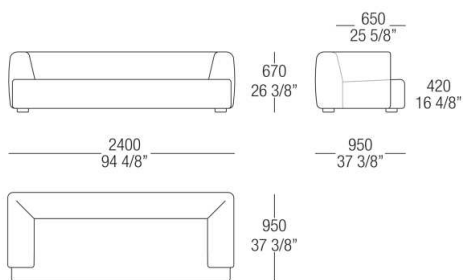
Linear sofa - 2 seaters



Linear sofa - 2 maxi seaters



Linear sofa - 3 seaters



Element with 1 armrest left/right

