

# CANNES

FERRUCCIO LAVIANI



The **Cannes** sofa is more like a collection of different elements that can be connected up to create a whole. These freestanding parts can be mixed and matched to suit each owner's taste, ensuring no two solutions are ever the same. Style and practicality are the watchwords of this contemporary sofa.

## TYPE / SOFAS

### TECHNICAL DESCRIPTION

**Cannes** is a sofa system available in a fixed and modular version that offers many different possibilities of compositions. It is made up of 9 base units that can be combined to form linear and corner compositions.

**Structure** in wood with elastic belts, coated with polyurethane foam with different densities and feather inlay on backrest and seat cushions. All metal parts are in satined nickel. Available with or without lateral decorative brackets.

**Coverings** are available in fabric or leather. Fabric covers can be removed by expert personnel after having disassembled the backrest, leather upholstery is not removable.

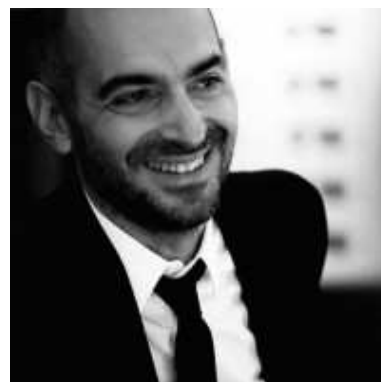
**Tray top** matt lacquered, W 380 D 1070 mm (W 15" D 42 1/8" inch).



# DESIGNER

FERRUCCIO LAVIANI

Born in Cremona in 1960 Laviani attends the Istituto Professionale Internazionale per l'Artigianato Liutario e del Legno di Cremona, receiving his degree in 1978. He later attends the Faculty of Architecture, at the Politecnico di Milano where he graduates in 1986, while attending at the same time the Scuola Politecnica di Design in Milan from 1982 to 1984. In 1983 he starts working for Michele De Lucchi; he becomes a partner in 1986 and works there until 1991, when he decides to open his own studio in Milan. Laviani's work mainly focuses on product design, interior design, art direction and graphic. Since 1991, he is the Art Director for Kartell; same role he has played for other companies. He designs retail spaces and set-ups, offices and houses for private clients, as well as for furniture and fashion. In 2008 an exhibition was dedicated to the lamps he designed for Kartell. Bourgie and Take lamps for Kartell are part of the permanent Collection of IMA, *Indianapolis Museum of Art (USA)*; also other products have been featured in museums and shows all over the world. In 2015, Laviani develops the new concept for Kartell Museum in Noviglio, updating the interior design he had conceived in 1999, when he received the award Premio Guggenheim Impresa & Cultura 2000, as the best museum of a company. Last year, he has started a collaboration with the Italian mosaic brand Bisazza. In 2016 Ferruccio has designed the pop-up store for the fashion designer Paula Cademartori and the set-up for the Haute Couture Women show for Dolce e Gabbana, at Laboratori Ansaldo, Teatro alla Scala, Milan.

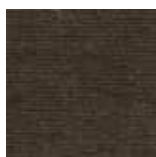


# COVER FINISHINGS

## FABRICS



A\_AS1 Saari



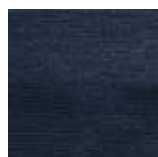
A\_AS2 Saari



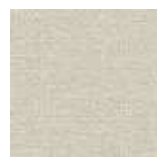
A\_AS4 Saari



A\_AS5 Saari



A\_AS7 Saari



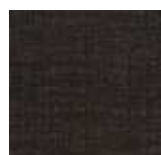
B\_CAE Cocò



B\_CAM  
Cocò



B\_CAK Cocò



B\_CAF Cocò



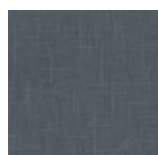
B\_BC1  
Burana



B\_BC3  
Burana



B\_BC4  
Burana



B\_BC6  
Burana



C\_C10 Star



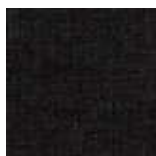
C\_C11 Star



C\_C17 Star



C\_C16 Star



C\_C18 Star



C\_C15 Star



D\_D91  
Panama



D\_D92  
Panama



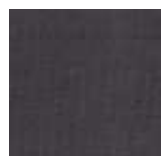
D\_D93  
Panama



D\_D94  
Panama



D\_D95  
Panama



D\_D98  
Panama



D\_i71 Clou



D\_i74 Clou



D\_i79 Clou



D\_i72 Clou



D\_i78 Clou



D\_D01  
Ubaye



D\_D03  
Ubaye



D\_D05  
Ubaye



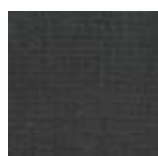
E\_E20 Mood



E\_E25 Mood



E\_E22 Mood



E\_E26 Mood



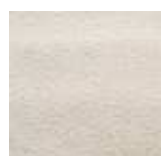
E\_E27 Mood



E\_E21 Mood



E\_E28 Mood



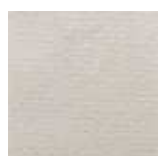
E\_E51 Lido



E\_E52 Lido



E\_E54 Lido



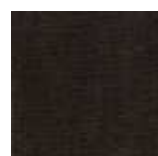
F\_F50 Luxus



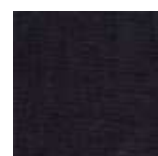
F\_F01 Luxus



F\_F02 Luxus



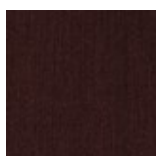
F\_F03 Luxus



F\_F05 Luxus



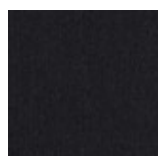
F\_F11 Lama



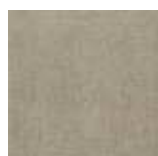
F\_F14 Lama



F\_F12 Lama



F\_F15 Lama



F\_F25  
Gaucho



F\_F21  
Gaucho



F\_F23  
Gaucho



F\_F24  
Gaucho



F\_F33  
Velvet

F\_F35  
Velvet

F\_F32  
Velvet

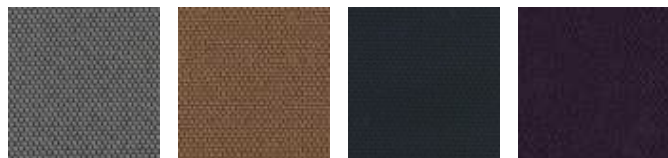
F\_EM5  
Velvet

H\_H42 Sera

H\_H44 Sera

H\_H47 Sera

H\_H48 Sera



H\_H50  
Opera

H\_H53  
Opera

H\_H55  
Opera

H\_H56  
Opera

## SMOOTH LEATHERS



H30 Gesso

H38 Sand

H36  
Camoscio

H32 Acacia

H31  
Naturale

H37  
Marmotta

H71 Testa di  
Moro

H35 Grigio  
Chiaro



H40 Blu  
Notte

H73 Nero

## NUBUCK



HN2  
Carbone

HN3 Grigio

## SMOOTH ECO-LEATHERS



C\_CE1

C\_CD3

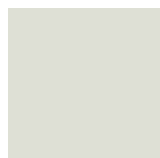
C\_CF6

C\_CD1

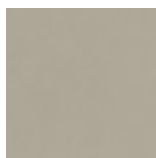
C\_CD4

C\_CD5

## EMBOSSED ECO-LEATHERS



C\_CE3



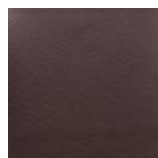
C\_CE5



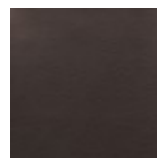
C\_CL1



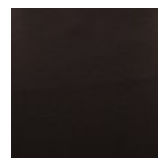
C\_CL3



C\_CL7



C\_CL8



C\_CL6

# STRUCTURE FINISHINGS

## METALS



522 Satinato

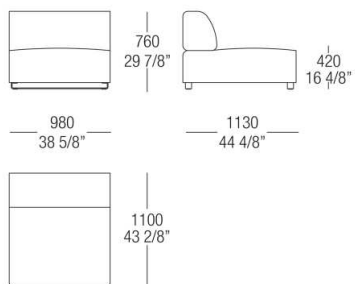
# TRAY FINISHINGS

## MATT LACQUERED COLOURS

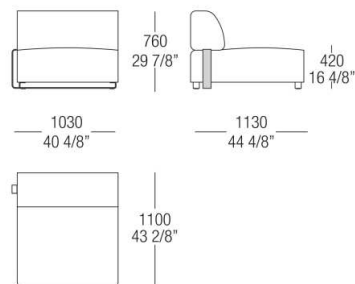
							
01 Gesso	8B Caolino	9G Ostrica	6B Grigio Pietra	14 Nero	02 Talco	9F Sand	4G Argilla
							
8C Cappuccino	5B Grigio Lava	72 Sabbia	8A Beige	9T Toffee	93 Melange	13 Sepia	09 Wengè
							
98 Oliva	8S Giallo	9B Senape	94 Marsala	81 Fuoco	95 Ruggine	9H Petrolio	9E Deep Blu
							
04 Bronzo	96 Canna di Fucile	99 Titanio	10 Argento	07 Ottone	05 Dark Bronze	06 Graphite	

# DIMENSIONS

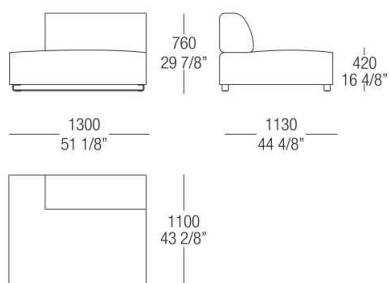
Central element



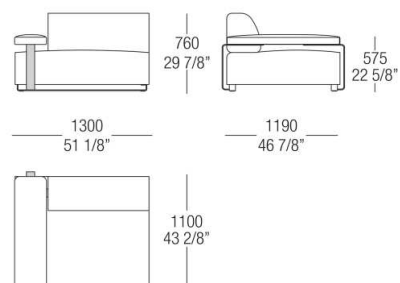
Element with side metal bracket left/right



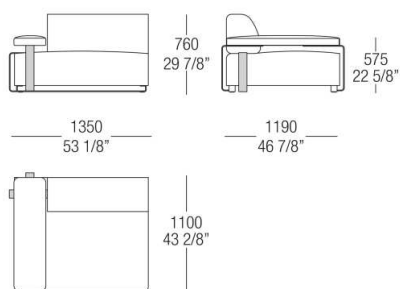
Element without armrest left/right



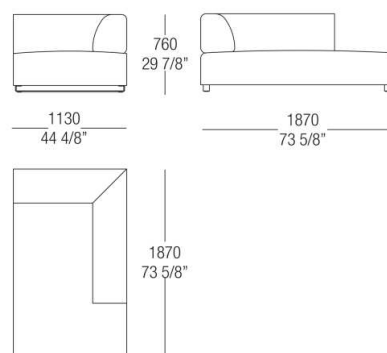
Element with armrest left/right



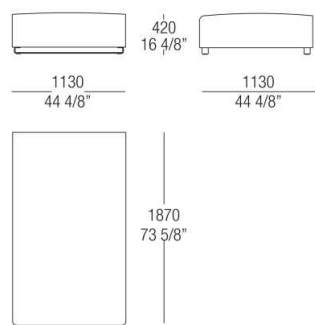
Element with armrest and side bracket left/right



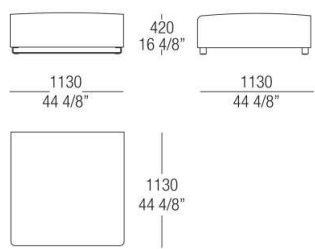
Chaise longue left/right



Rectangular pouf



Square pouf



Square pouf with tray top left/right

