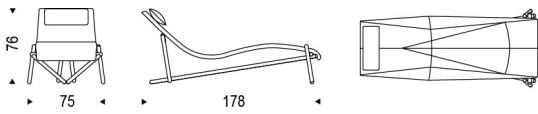


DONOVAN

Design: Giuseppe Viganò



DIMENSIONS



75x178x76h

DESCRIPTION

Chaise longue with base in white (GFM71) or graphite (GFM69) embossed lacquered steel, wooden frame upholstered and covered in synthetic leather or soft leather as per sample card or pony skin leather. The cover is not removable.

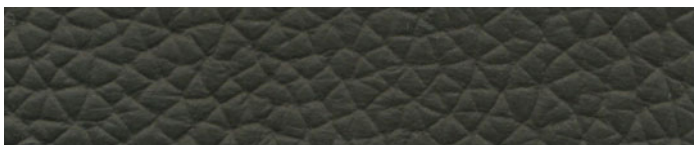
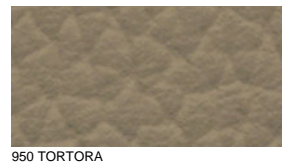
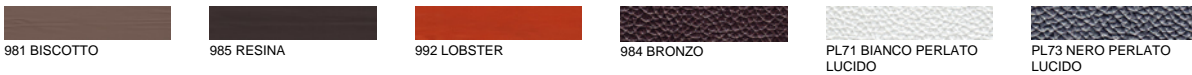
FINISHES: base

metal



FINISHES: seat

soft leather



953 ARDESIA



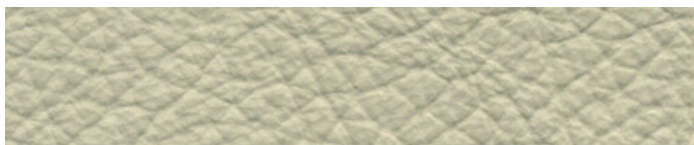
954 VERDE



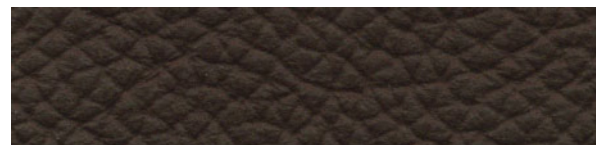
955 MORA



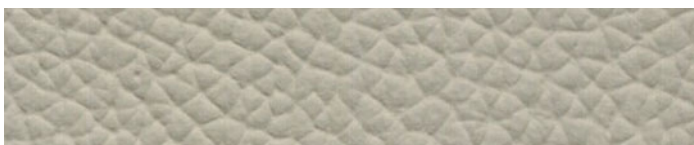
971 BIANCO



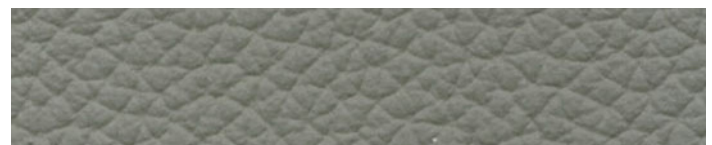
967 AVORIO



891 TESTA DI MORO



948 LINO



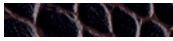
949 CENERE



952 SMOKE

le informazioni qui riportate sono basate sugli ultimi dati pubblicati a listino. L'azienda si riserva il diritto di apportare modifiche ai modelli senza preavviso.

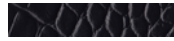
crocodile soft leather



CR1 TESTA DI MORO



CR71 BIANCO



CR73 NERO

synthetic leather



ECP01 BIANCO



ECP03 PANNA



ECP04 BEIGE



ECP05 TORTORA



ECP06 RAME



ECP07 MARRONE



ECP08 MOKA



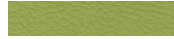
ECP12 ARANCIO



ECP13 ROSSO CORSA



ECP14 BORDEAUX



ECP17 VERDE



ECP18 OLIVA



ECP23 LONDON



ECP20 CIELO



ECP21 OCEAN



ECP24 NERO



ECP16 CICLAMINO



ECP25 CANAPA



ECP15 MAGENTA



ECP26 FANGO



ECP29 CEDRO



ECP36 CEMENTO

leathertex



LT01



LT02



LT45



LT53



LT64



LT65

pony skin leather



pony skin leather